



Report 2014

**LEITNER**<sup>®</sup>  
ropeways





LEITNER ropeways – Innovative und nachhaltige Seilbahntechnologie.  
Maßgeschneiderte Lösungen und einmalige Fahrerlebnisse mit höchstem Komfort.

Welschnofen / Italien





INNOVATION  
NACHHALTIGKEIT  
**DirectDrive**



Obertauern / Österreich



## RÜCKBLICK 2014

Bahnen von LEITNER ropeways erfüllen nicht mehr nur klassische Transportaufgaben. Sie setzen neue Komfortstandards und präsentieren sich mit ihrem hochwertigen Design als touristische Attraktionen. Seilbahnen schaffen mehr Lebensqualität: einerseits mit maximalem Fahrkomfort und kinderfreundlichen Einstiegen beim Wintersport und andererseits durch die Reduzierung des Straßenverkehrs in Städten sowie faszinierenden Vogelperspektiven bei Ausstellungen und in Freizeitparks. 2014 errichtete LEITNER ropeways 38 Anlagen in dreizehn Ländern. Dabei zeigte sich klar, dass die Kunden sowohl bei der Umweltverträglichkeit und Technik als auch beim Komfort Spitzenleistungen erwarten.

### **DirectDrive - Mehr Effizienz, Zuverlässigkeit und Nachhaltigkeit**

Mit dem DirectDrive kann LEITNER ropeways Lösungen anbieten, die genau diese Ansprüche nachhaltig erfüllen. Seilbahnen laufen mit der modernen und von LEITNER ropeways exklusiv angebotenen Antriebstechnik deutlich leiser, verbrauchen weniger Energie und sind dank geringerer Verschleißteile auch zuverlässiger sowie wartungsfreundlicher. Im Jahr 2014 wurden zehn Anlagen, die mit dem DirectDrive ausgestattet sind, fertiggestellt. Dazu gehören die Bahnen Tschein und Borest in Südtirol, die Panoramabahn in Obertauern, die Golzen-tippbahn in Obertilliach, der Milchhäuslexpress in Lenggries, der Rohace Express in der Slowakei, der Klockar Express im schwedischen Vermdalen, die Levi South im finnischen Levi, der Expressheis im norwegischen Roldal und die urbane Anlage Yenimahalle in Ankara.

### **Design und Komfort - Die Bahn als touristische Attraktion**

Qualität und Individualität sind Kernkompetenzen von LEITNER ropeways, aber auch die Aufmachung der Bahnen spielt eine zentrale Rolle. Mit innovativen Designlösungen schaffen moderne Bahnen vielversprechende neue Optionen für die Betreiber. Neben gefragten Komfortattributen wie farbigen Wetterschutzhauben und beheizten Ledersitzen können individuelle Gestaltungselemente die Attraktivität der Bahnen und deren Erscheinungsbild deutlich verbessern. Eigenständige Lösungen mit ungewöhnlichem Luxus und kreativen Konstruktionen machen die Seilbahnen von LEITNER ropeways zu Attraktionen, die den Standort aufwerten und Impulse schaffen. Mit individuellen Designelementen und ausdrucksstarken Accessoires wird die Bahn zu einem wichtigen Faktor des Corporate Designs. So weckten die Sitze der Bahn am Ganslernhang in Kitzbühel, die mit Kunstplakaten an die legendären Slalomrennen erinnern, bereits zur Premiere beim Hahnenkamm-Rennen großes Publikumsinteresse. Jeder Sessel ist einem Jahrgang der Weltcuprennen auf dieser berühmten Piste gewidmet.





## Italien

Insgesamt sieben neue Bahnen sind 2014 in Italien entstanden. Die Verbindung der beiden Skigebiete Helm und Rotwand im Hochpustertal mit den beiden GD8 Seilbahnen Drei Zinnen und Stiergarten sorgt in der Region für eine deutliche Verbesserung des sportlichen und touristischen Angebots. Damit entstanden zwei neue Abfahrten, und es formierte sich ganz offiziell das neue Skigebiet Sextner Dolomiten. In Kolfuschg in Alta Badia schafft die neue 8er Kabinenbahn Borest eine bessere Verbindung zum Grödner Joch und erhöht so die Attraktivität der weltberühmten Sella Ronda. Eine weitere 8er Kabinenbahn fährt in Molveno zum Hochplateau Pradel. In Corvara sowie in Welschnofen wurden neue 6er Sesselbahnen realisiert. In Castione della Presolana entstand ein neuer Schlepplift.

## Österreich

In Obertauern startete eine neue 6er Sesselbahn, die mit Sitzheizung, gelben Wetter-schutzhauben und gelb-schwarzer Polsterung besonders viel Fahrkomfort bietet. Die neue 10er Kabinenbahn am Golzentipp in Obertilliach in Osttirol reduziert die Fahrzeit zur Bergstation um 50 Prozent. Sie ist mit DirectDrive und Panoramafenstern ausgestattet. Durch diese Bahn wurde in Obertilliach ein wichtiger Meilenstein für den Tourismus gelegt. In Kaprun wurde der Schrägaufzug Lärchwand mit modernster Technik ausgestattet und bringt nun Fahrgäste wesentlich schneller und bequemer zu Stauseen sowie Kraftwerksanlagen.

## Deutschland

Das beliebte Skigebiet am Brauneck in Bayern erfährt mit dem neuen CD6C Milchhäuslexpress eine deutliche Verbesserung der Verbindungen auf der Südseite. Zudem wurde die Bahn mit besonders familienfreundlichen Funktionen wie dem automatisch verriegelbaren Schließbügel und dem Einstiegsförderband mit Hubtisch ausgestattet, der erkennt, ob Kinder oder Erwachsene einsteigen.

## Schweiz

Die beiden neuen Kabinenbahnen Stand-XPRESS I und II im Skigebiet Adelboden-Lenk sind die ersten 10er Kabinenbahnen im Berner Oberland. Damit erreichen die Gäste nun direkt den Gipfel und benötigen dazu weniger als die Hälfte der bislang üblichen Fahrtzeit.

## Skandinavien

Die GD8 Byliften im schwedischen Funäsdalen ist die erste reine Kabinenbahn von LEITNER ropeways in Skandinavien. Mit ihr kommen die Fahrgäste jetzt in nur drei Minuten von der Stadt zum Gipfel – umständliche Autofahrten bleiben damit erspart. Der CD6C Väst Express in Vemdalen ist die größte Anlage in Schweden. Die erste und modernste Bahn mit DirectDrive in den nordischen Ländern ist die 6er Sesselbahn Levi South im finnischen Levi. Sie ist mit Sitzheizung, Komfortsitzen und Hauben besonders gut ausgestattet. Die dazugehörige Magazinhalle wird auch als Veranstaltungsort für Kinder genutzt. Weitere neue Bahnen wurden in den norwegischen Gebieten Røldal und Strandafjellet Skisenter realisiert.

Ankara / Türkiye



Bursa / Türkiye



## Spanien

Im Skigebiet Valdelinares in der Region Aragón ist die neue CF4 Valdelinares ein wichtiger Bestandteil bei der Erweiterung des Skigebiets. Mit neuen Pisten und besseren Verbindungen gewinnt es deutlich an Attraktivität.

## Frankreich

Im Skigebiet Les Arcs entstand die neue 8er Kabinenbahn Des Villards. Sie ist während der Wintersaison täglich bis 23 Uhr in Betrieb. Die Verbindung zwischen Megève und St. Gervais ist dank der neuen 6er Sesselbahn Mont Joux wesentlich besser geworden. Auch im Skigebiet Le Lioran im Zentralmassiv kommen die Gäste deutlich schneller auf die Piste. Der neue CD6 Buron du Baguet ist die erste kuppelbare 6er Sesselbahn in der Region. Im Skigebiet Le Dévoluy in den Hautes-Alpes schafft eine neue Pendelbahn, eine Kombination aus Personentransport und Materialseilbahn, eine erheblich bessere Verbindung zum Pic de Bure und zum Observatorium.

## Türkei

Die Türkei zählt für LEITNER ropeways seit Jahren zu den besonders dynamisch wachsenden Märkten. In Ankara verbindet die größte urbane Seilbahn Eurasiens die Stadtteile Şentepe und Yenimahalle mit dem Metronetz. Ebenfalls in Ankara wurde eine Gruppenbahn im Bezirk Sinpaş realisiert, die wichtige Transportaufgaben in einer prestigeträchtigen neuen Wohnsiedlung übernehmen wird. In Bursa erreichen die Besucher nun das Erholungsgebiet am Berg Uludağ wesentlich schneller und bequemer mit der neun Kilometer langen Kabinenbahn, die damit die längste Einseilumlaufbahn der Welt ist. Lange Bus- oder Taxifahrten gehören jetzt der Vergangenheit an. Außerdem wurden 2014 drei Bahnen in Sivas in Zentralanatolien, weitere drei in Tavas Bozdag sowie eine in Ilgaz realisiert.

## Polen, Slowakei

Im Skigebiet Wisla Skolnity in den Beskiden in Polen ermöglicht die neue CF4 Wisla Skolnity eine deutliche Ausweitung des Sommer- und Winterangebots. Der neue CD6C Rohace Express im Skigebiet Roháče-Spálená in der Slowakei ist mit DirectDrive, Sitzheizung, blauen Hauben und automatischer Garagierung auf dem modernsten Stand.

## Serbien

In Kopaonik erhielt das größte Skigebiet Serbiens zwei neue 6er Sesselbahnen, die mit Hauben und Sitzheizung ausgestattet sind. Dank der Anlagen können in dem Skigebiet nun auch FIS-Rennen ausgetragen werden.

SYMPHONY: 3S Kabine designed by Pininfarina



LEITNER Premium Chair



## AUSBLICK

### **Neue Premium Sessel, exklusive Kabinen und nachhaltiger Antrieb**

Auch 2015 stehen innovatives Design und höchste Qualität im Mittelpunkt des Interesses. Dies betrifft das destinationsspezifische Branding der Bahnen genauso wie exklusive Accessoires. LEITNER ropeways arbeitet zusammen mit den Kunden ständig an attraktiven Optionen und setzt mit hochwertigen Innovationen neue Standards. Dazu gehört beispielsweise der neue LEITNER Premium Chair im Automobil-Design mit Echtlederbezug. Besonders eindrucksvoll wird die neue 3S Kabine designed by Pininfarina: Panoramablick, hoher Sitzkomfort, Rahmenbeleuchtung mit individuellen Lichtlösungen, dazu ein Multimediasystem, ein perfektioniertes Belüftungssystem und ein Glasboden, der mittels Impuls auf transparent geschaltet werden kann, sind die Highlights dieser spektakulären Kabine. Ebenfalls herausragend: Der innovative Antrieb DirectDrive, der sich bei LEITNER ropeways als Standard etabliert hat.

### **Wintersport - Mehr Komfort, mehr Design und neue Verbindungen**

Zahlreiche neue Bahnen unterstreichen die wachsende Nachfrage nach mehr Fahrkomfort und Erlebnisqualität am Berg. So entsteht in Ponte di Legno am Tonale Pass in Italien eine 8er Kabinenbahn zum Passo Presena, welche die Betriebsdauer auf 10 Monate verlängern und die Attraktivität des Gletschergebiets verbessern wird. Die zwei Kabinenbahnen in Gerlos im Zillertal schaffen eine neue direkte Verbindung vom Ort ins Skigebiet. Die 3S Eisgratbahn am Stubai Gletscher wird 2016 in Betrieb genommen und eine wichtige Zubringerbahn sein. Die weltweit erste Dreiseilumlaufbahn mit DirectDrive wird ganzjährig eingesetzt werden. In Zermatt wird bereits in diesem Jahr die 6er Sesselbahn Joscht Hirli errichtet. Darüber hinaus wird LEITNER ropeways im höchstgelegenen Skigebiet Europas eine neue 3S Bahn bauen. Sie führt vom Trockenen Steg hinauf zum Klein Matterhorn sowie zu einer der höchsten Bergstationen

in Europa. In Laax legen die Auftraggeber bei der neuen GD10 Sogn Martin besonderen Wert auf Design. Eine besonders familienfreundliche 6er Sesselbahn entsteht im Skigebiet Feldberg im deutschen Hochschwarzwald. Des Weiteren wird eine neue CD6C Bahn mit blauen Wetzschutzhäuben und schwarz-blauen Komfortpolstern im Skigebiet Černá Hora in Tschechien für Aufmerksamkeit sorgen.

### **Tourismus - zu Bären, Gorillas und spektakulären Aussichtspunkten**

Zwei neue Projekte zeigen, dass Seilbahnen nicht nur Wintersportler zu ihren Zielen bringen und Verkehrsprobleme lösen können, sondern auch neue interessante Perspektiven schaffen. Direkt zu Bären und Gorillas kommen die Besucher des Naturparks von Cabárceno in der nordspanischen Provinz Kantabrien mit zwei neuen Kabinenbahnen. Eindrucksvolle Aussichten können auch die Passagiere des neuen Schrägaufzugs am Castel San Pietro in Verona genießen.

### **Urbaner Personentransport - Panoramafahrt in der Gartenausstellung**

Weltweit realisiert LEITNER ropeways zukunftsweisende Bahnen im urbanen Umfeld. Im Stadtteil Ecatepec de Morelos von Mexico City entstehen die ersten städtischen Seilbahnen Mexikos und die ersten Bahnen mit DirectDrive in Amerika. Die beiden Projekte haben eine Gesamtlänge von 4.700 Metern. Für die Internationale Gartenausstellung Berlin 2017 baut LEITNER ropeways eine Seilbahn, mit der die Besucher auf 1,5 Kilometern Länge eine Panoramafahrt vom Haupteingang zum Blumberger Damm erleben. Direkt am U-Bahnhof gelegen, ist die Anlage optimal an das öffentliche Verkehrssystem angebunden. In einem neuen Shoppingkomplex mit Vergnügungspark bei Kualalumpur in Malaysia wird eine GD10 Bahn als Awana Skyway eine zentrale Transportaufgabe übernehmen.

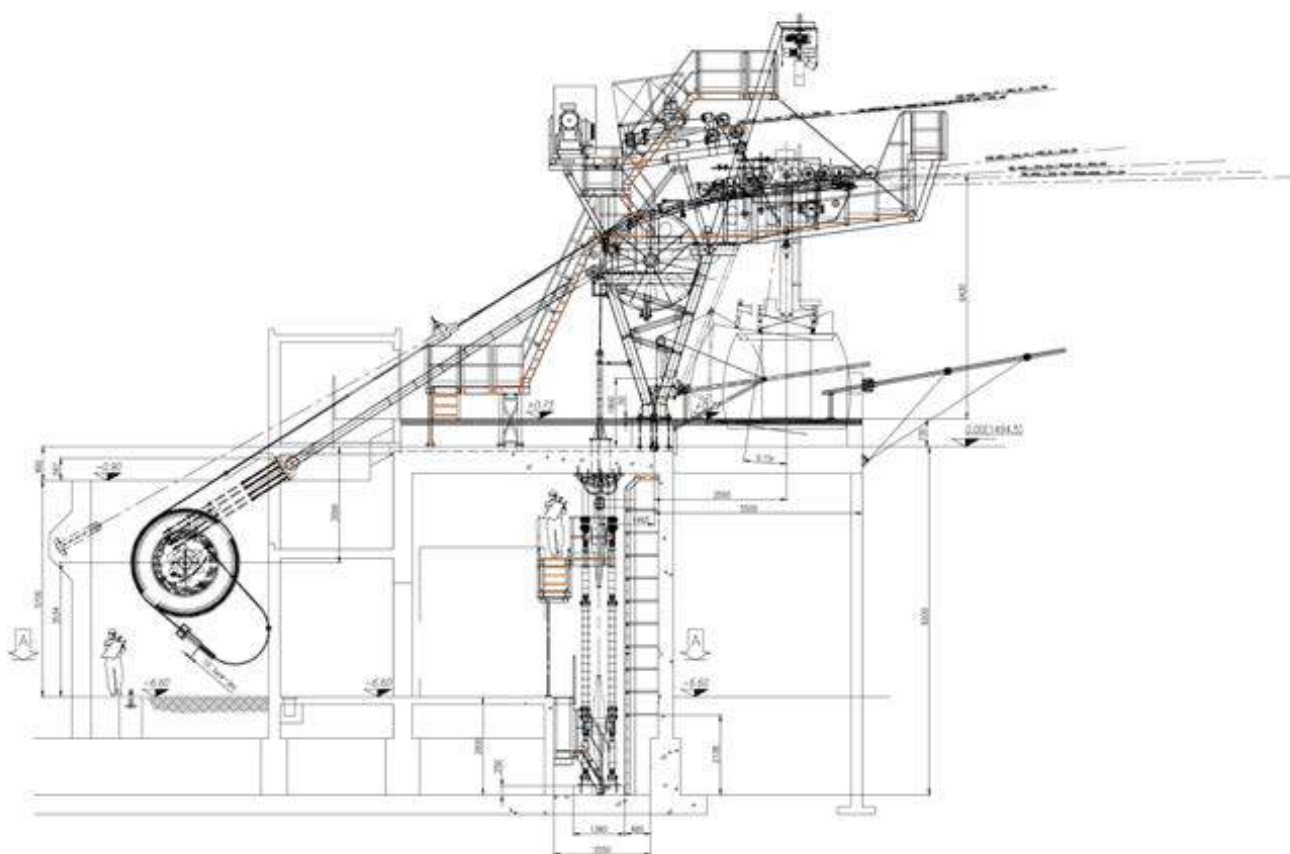


## Beispiele aus 365 Tagen Arbeit ...

# AT15 PIC DE BURE

Le Dévoluy / FR

↗	4040 m	⚙️	500 kW
↕	1061 m	🗉	2
👤👤👤	15 Pers.	⌚	4
	6000 kg		











## GD10 STAND-XPRESS I

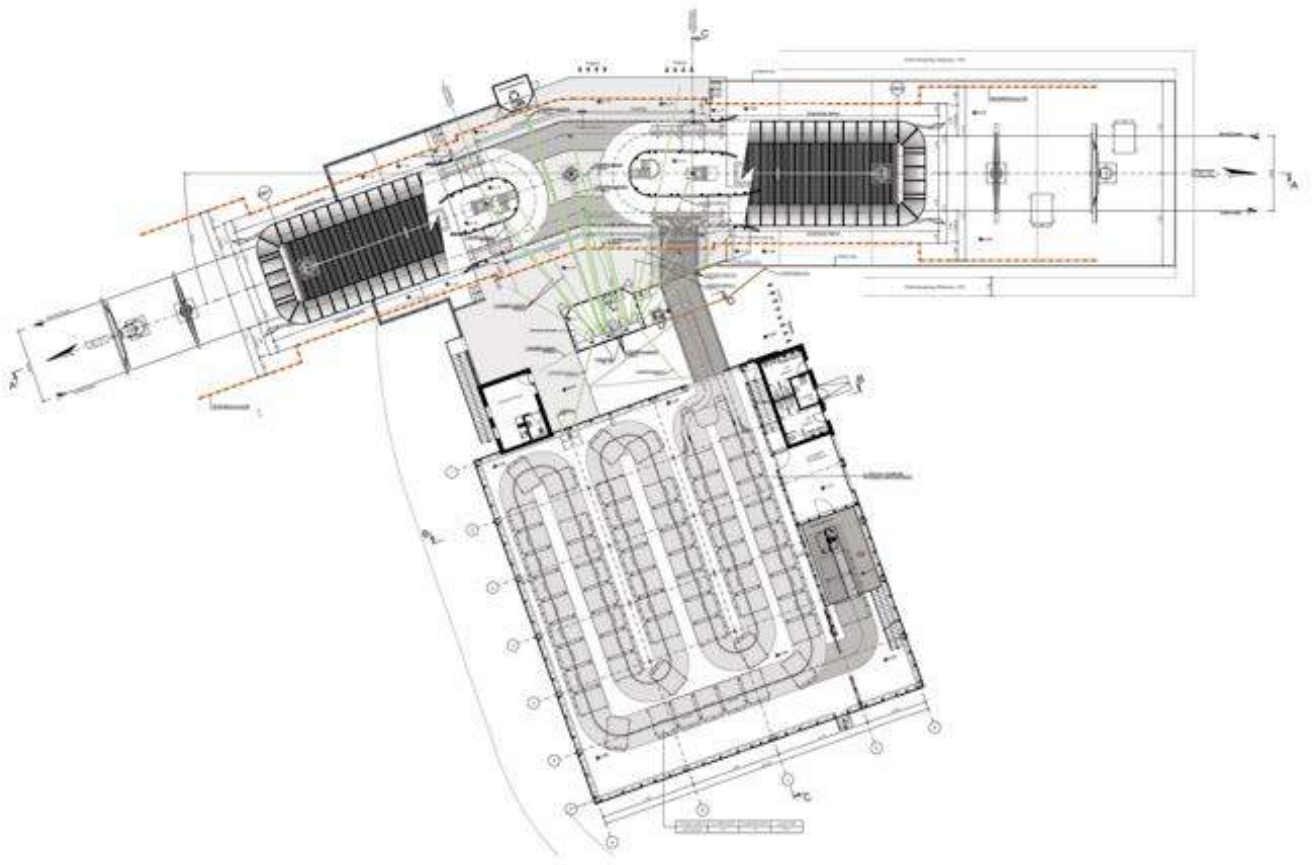
Lenk / CH

↗	886 m	⊕	435 kW
↕	396 m	☒	29
👤👤👤	2400 p/h	⌋	8

## GD10 STAND-XPRESS II

Lenk / CH

↗	2151 m	⊕	660 kW
↕	627 m	☒	59
👤👤👤	2400 p/h	⌋	12











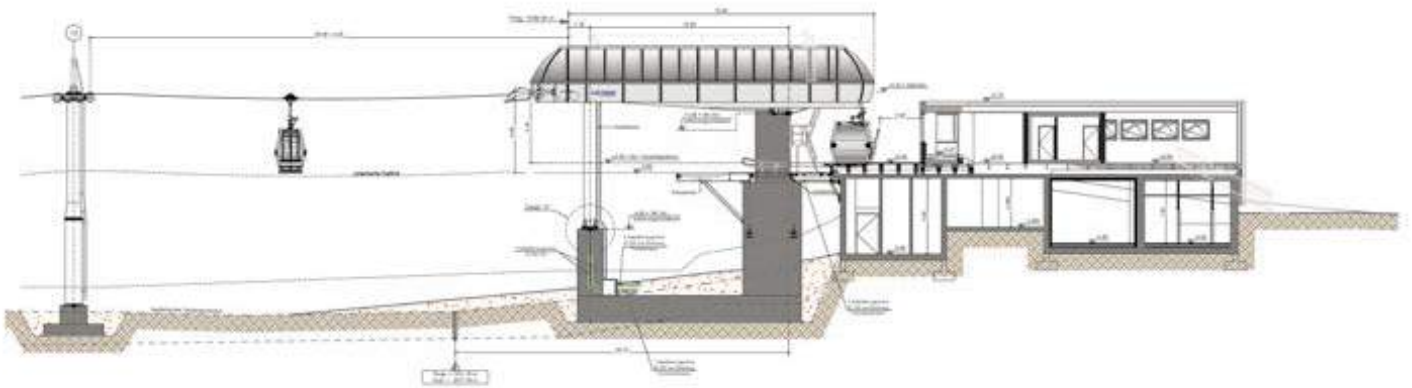




# GD10 GOLZENTIPPBAHN

Golzentipp / AT

 1679 m	 469 kW
 653 m	 27
 1495 p/h	 12













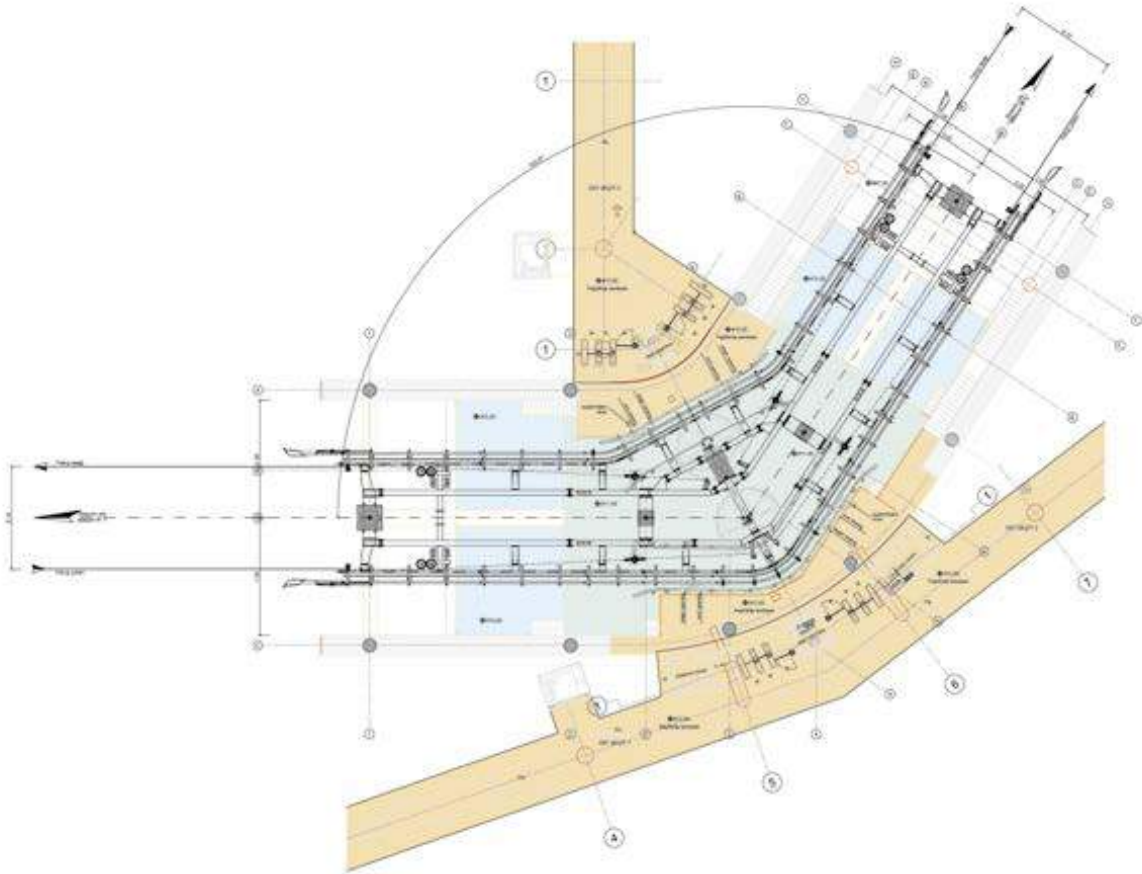




# GD10 YENIMAHALLE I + II

Ankara / TR

	1430 m		440 kW
	126 m		54
	2400 p/h		12





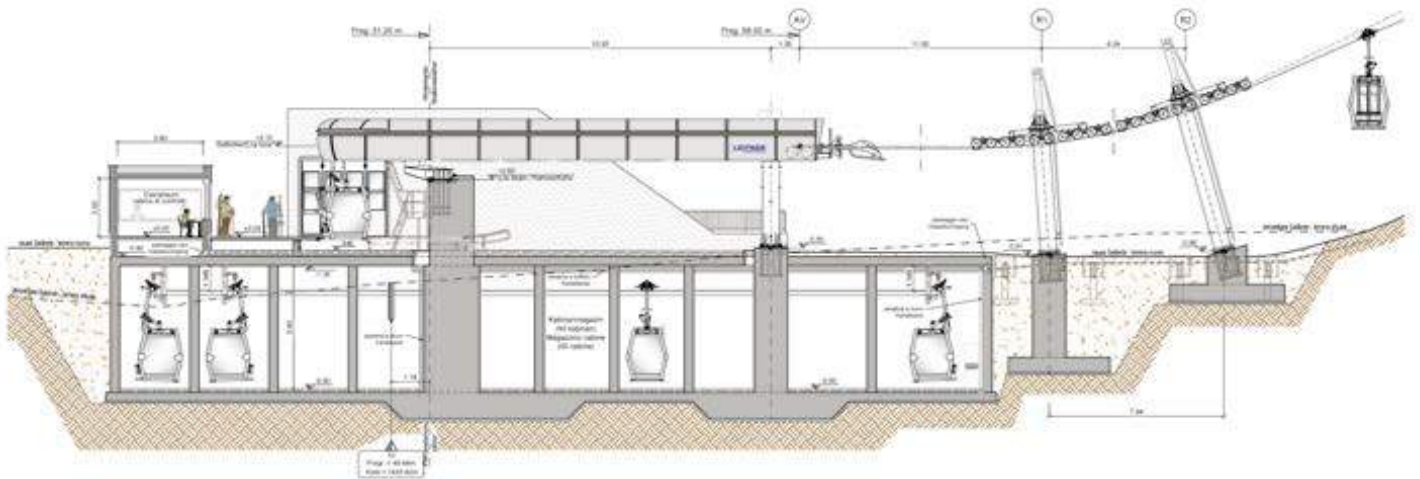




# GD8 DREI ZINNEN

Sexten – Sesto / IT

↗	2033 m	⚙️	780 kW
↕	655 m	🗉	60
👤👤👤	2200 p/h	⌚	13







DREI ZINNEN  
TRE CIME

14

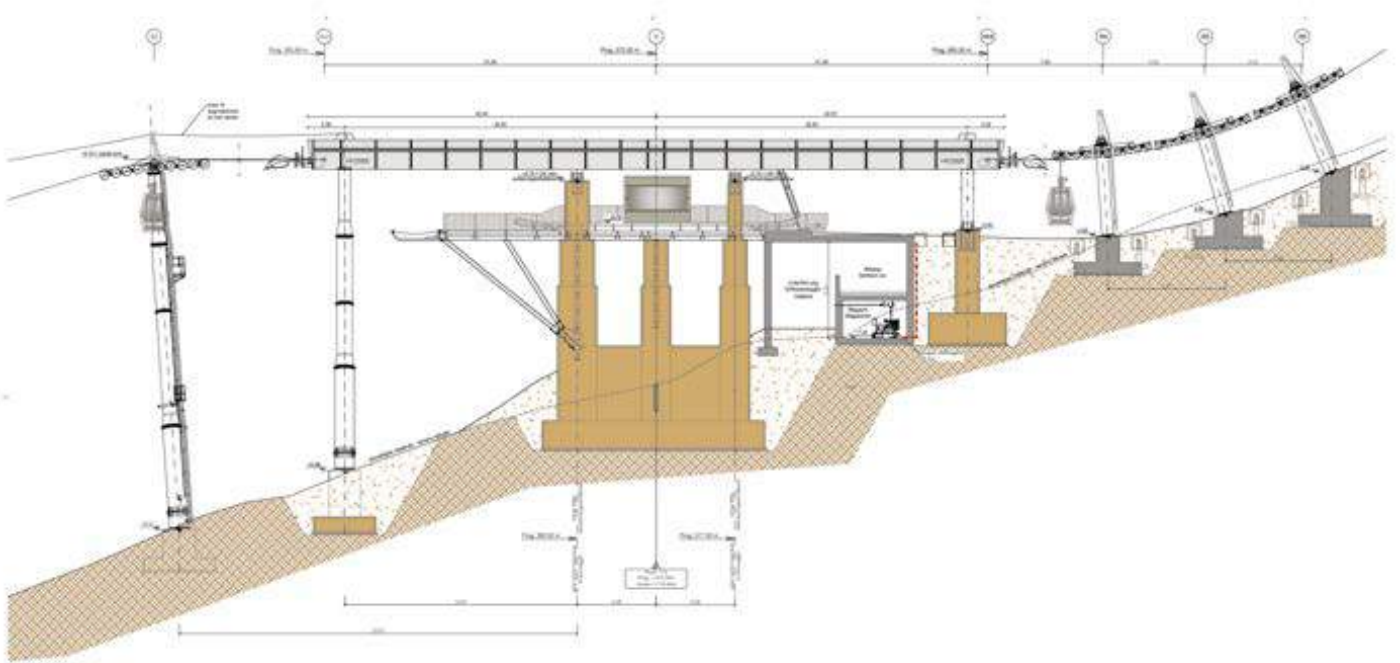




# GD8 STIERGARTEN

Sexten – Sesto / IT

↗	1791 m	⊕	660 kW
↕	424 m	☰	50
👤👤👤	1800 p/h	⌋	14





STIERGARTEN  
ORTO DEL TORO







16

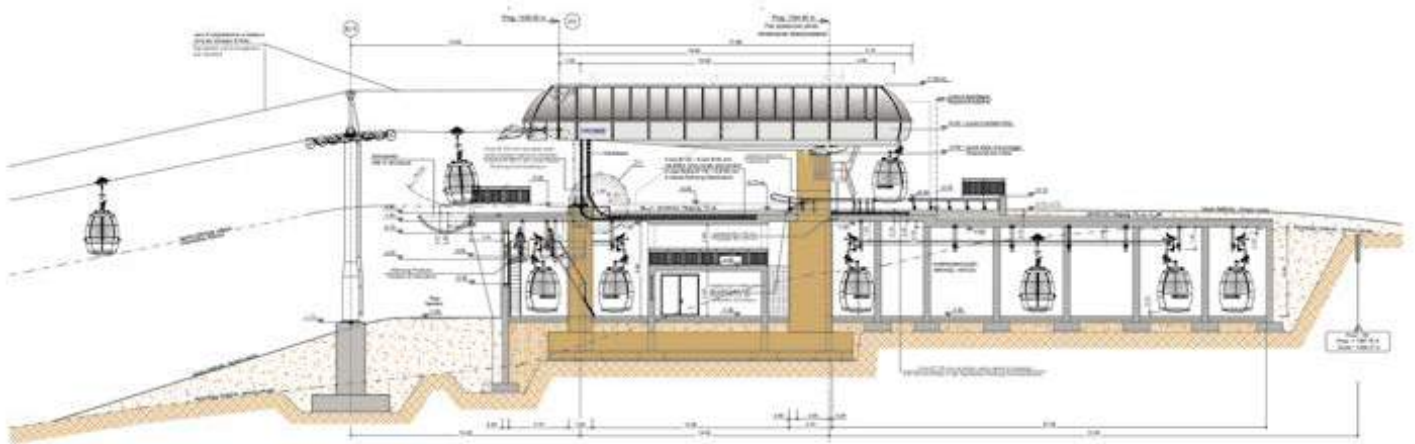




# GD8 BOREST

Kolfuschg – Colfosco / IT

	1294 m		358 kW
	59 m		63
	3300 p/h		11







Borest

SOLFOSCO  
DOLOMITI  
SUPERSKI

12

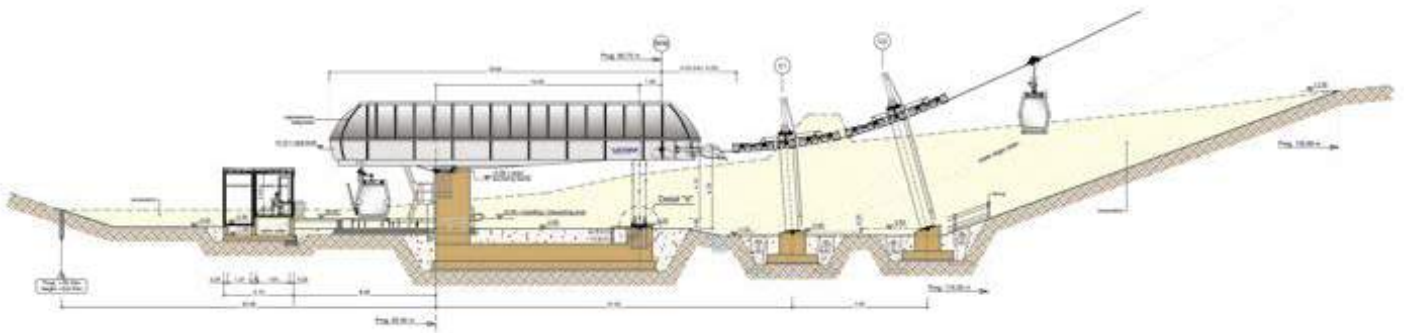




# GD8 BYLIFTEN

Funäsdalen / SE

↗	862 m	⚙	370 kW
↕	316 m	☎	22
👤👤👤	1474 p/h	⌚	7





FUNÄS  
DALSBERGET



Audi







11

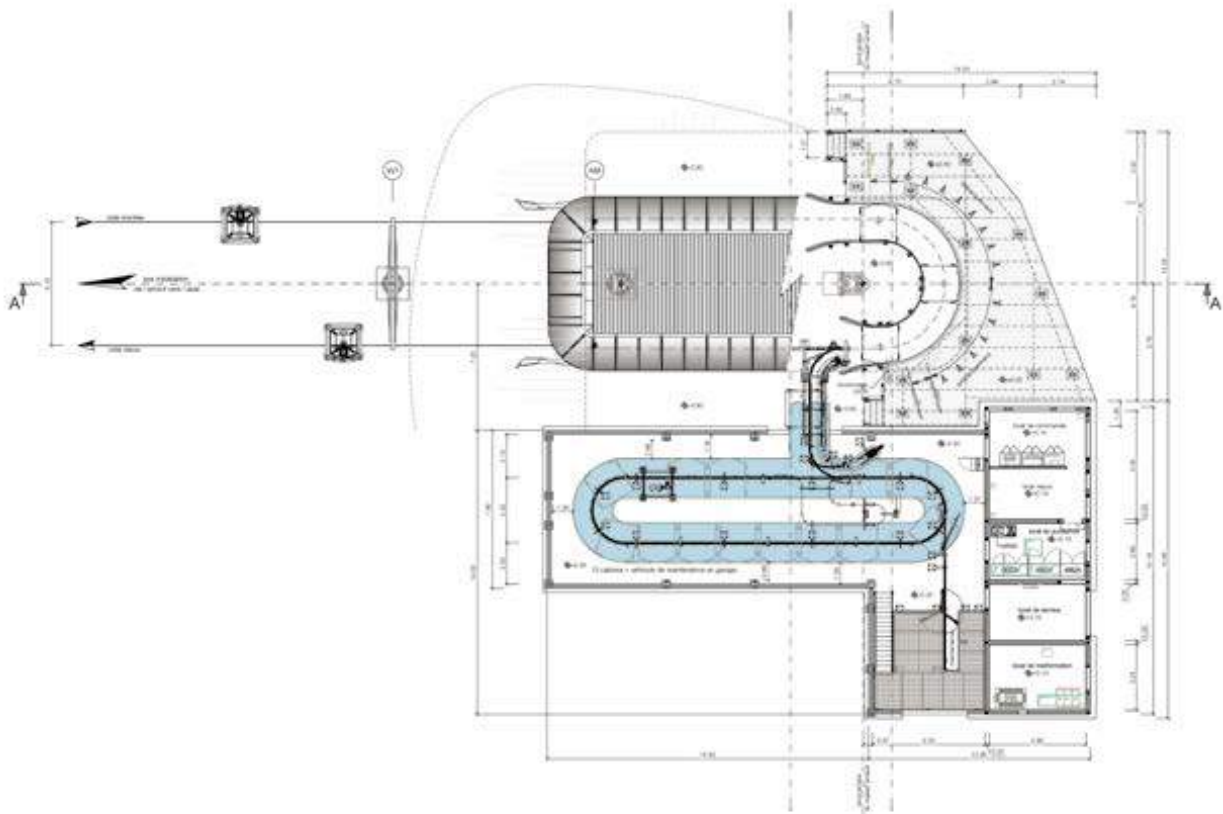




# GD8 VILLARDS

Les Arcs / FR

 573 m	 400 kW
 119 m	 26
 2400 p/h	 7







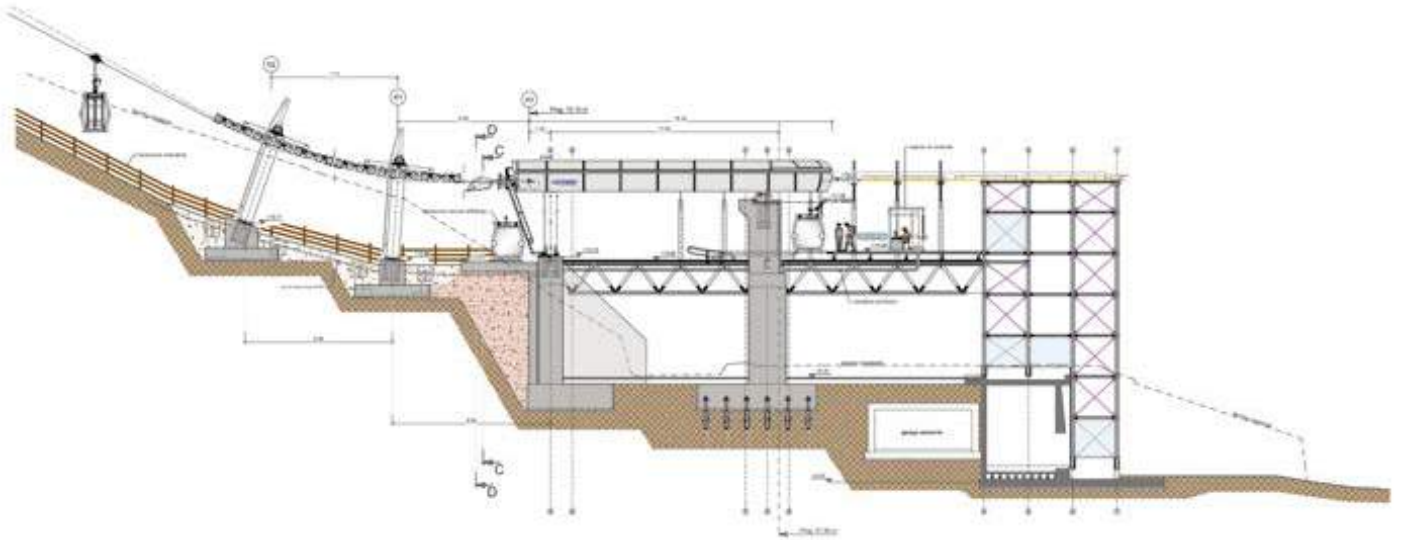




# GD8/10 MOLVENO PRADEL

Molveno / IT

↗ 951 m	⚙ 500 kW
↕ 455 m	☎ 33
👤 2000 p/h	⌚ 9











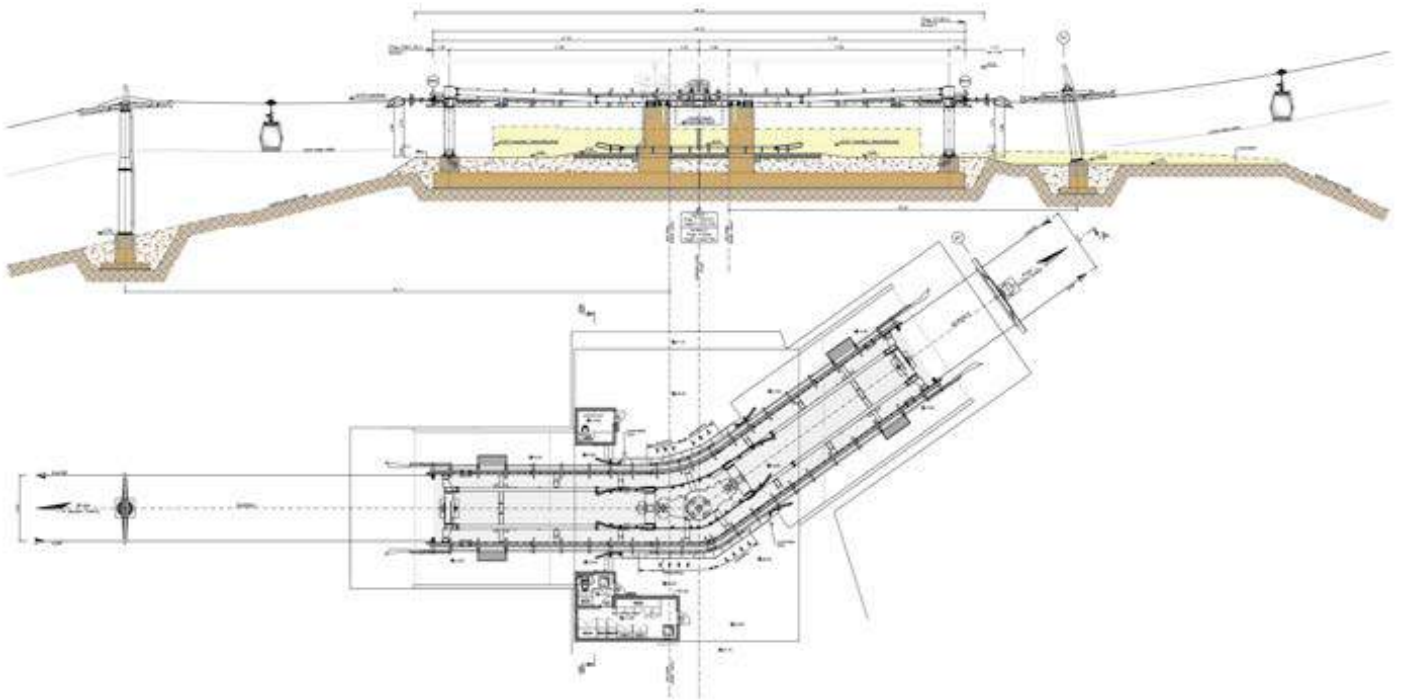




# GD8 BURSA I + II

Bursa / TR

	4625 m		1056 kW
	1239 m		95
	1500 p/h		25











# GD8 BURSA III

Bursa / TR

↗	4213 m	⊕	424 kW
↕	164 m	☎	81
👤👤	1500 p/h	⌈	19





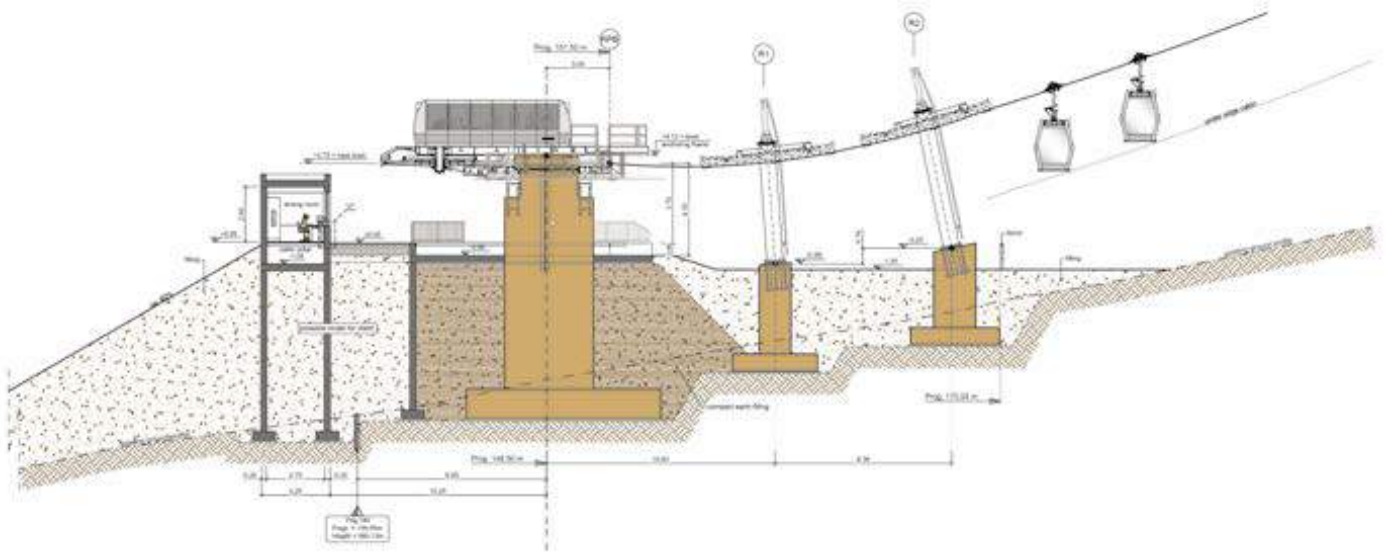




# GFR 2-2-8 SINPAS

Ankara / TR

↗	417 m	⚙️	200 kW
↕	136 m	🗣️	4
👤👤👤	400 p/h	⌚	7









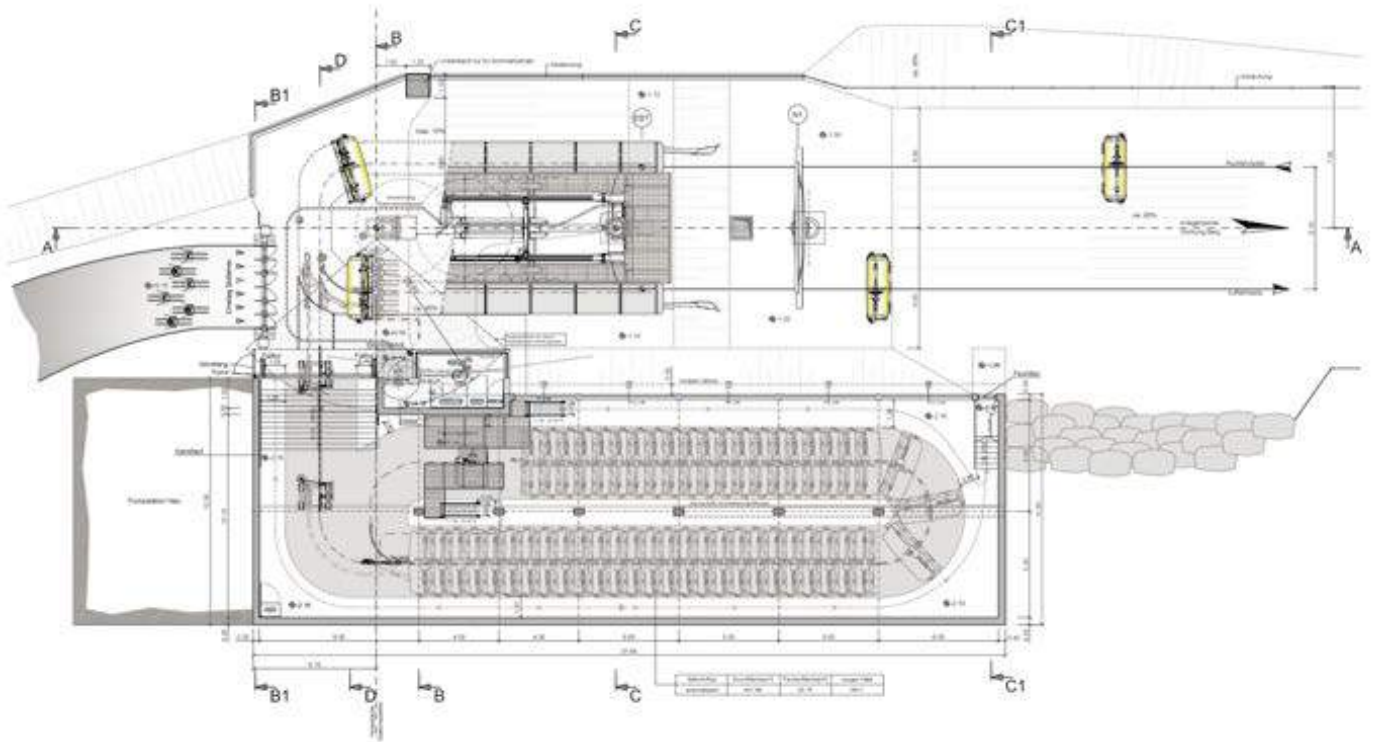




# CD6C PANORAMABAHN

Obertauern / AT

	911 m		349 kW
	261 m		49
	2600 p/h		8











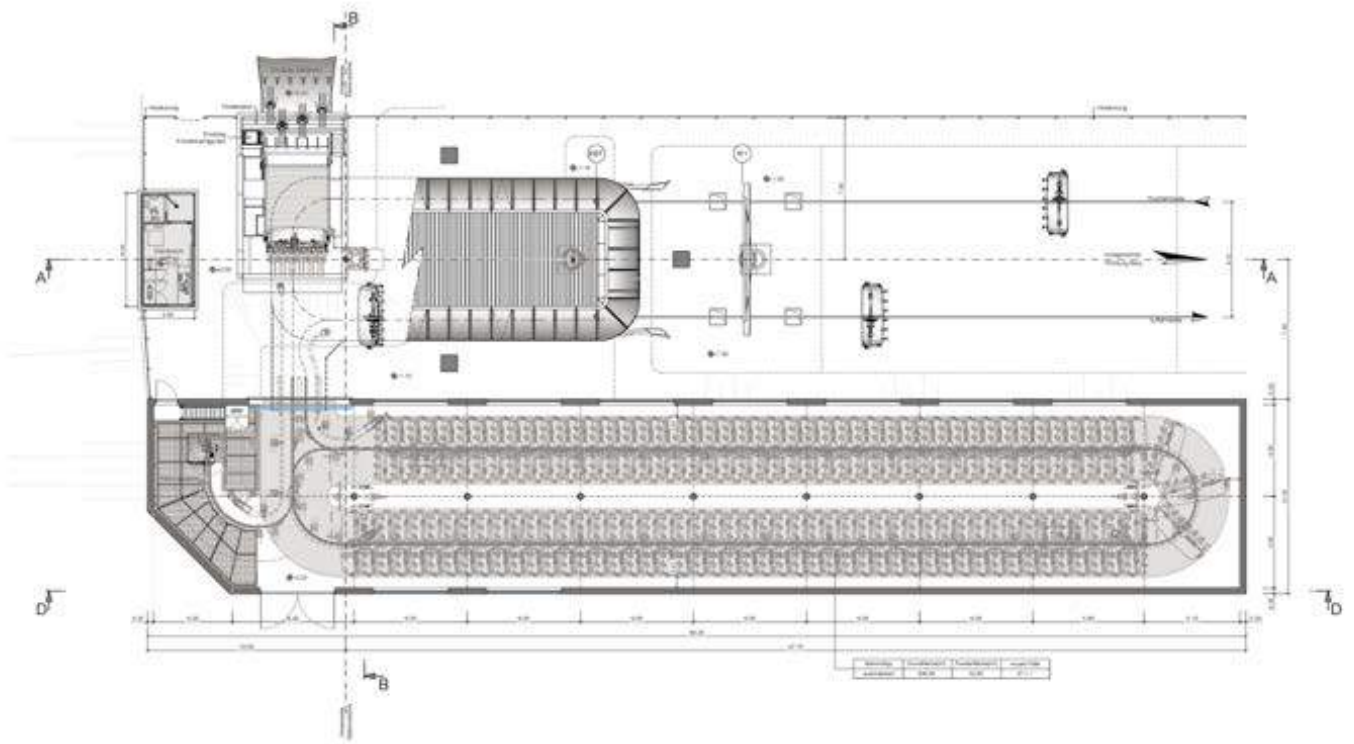




# CD6C MILCHHÄUSLEXPRESS

Lenggries / DE

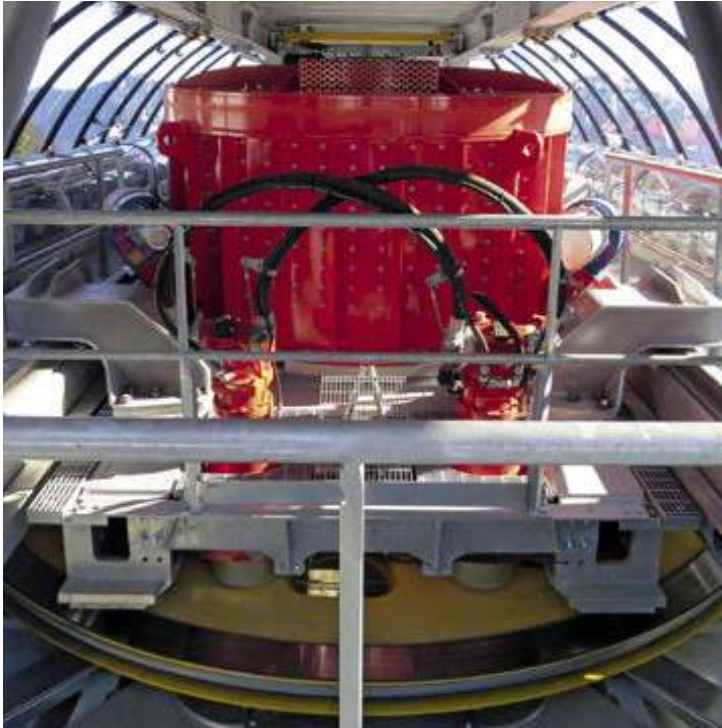
	1774 m		636 kW
	456 m		97
	2800 p/h		15













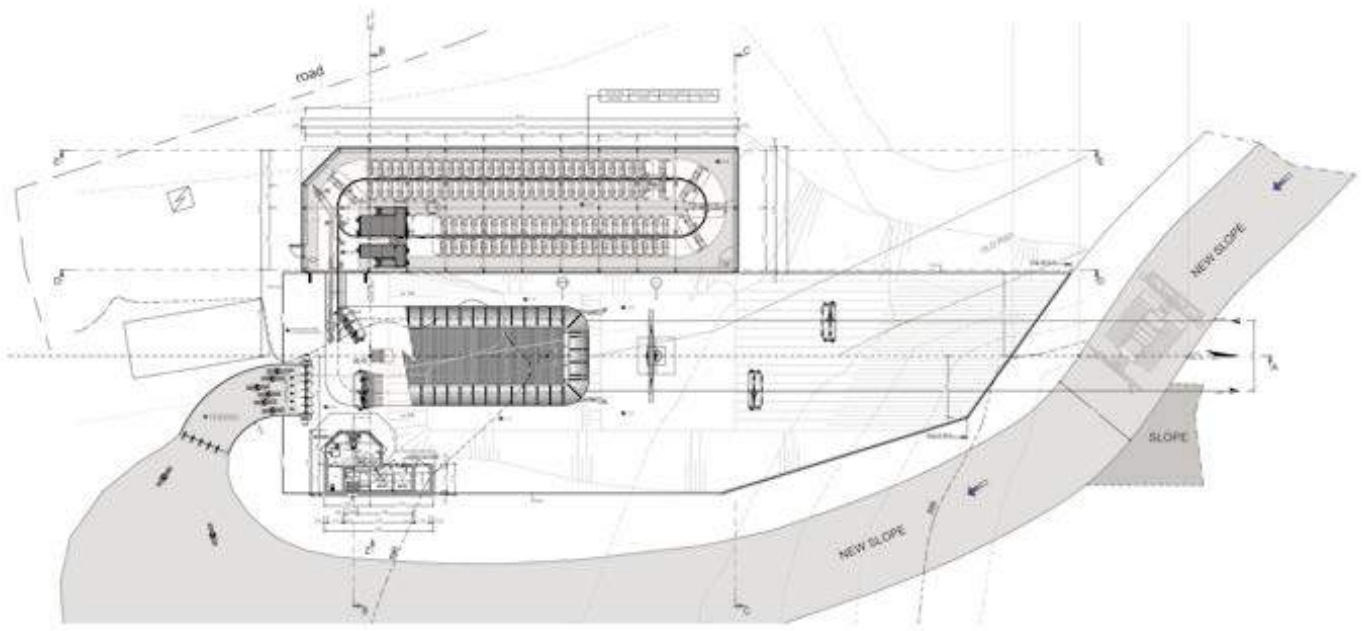




# CD6C VÄST EXPRESS

Vemdalen / SE

	1177 m		350 kW
	319 m		56
	2800 p/h		11









# CD6C LEVI SOUTH

Levi / FI

↗ 1711 m

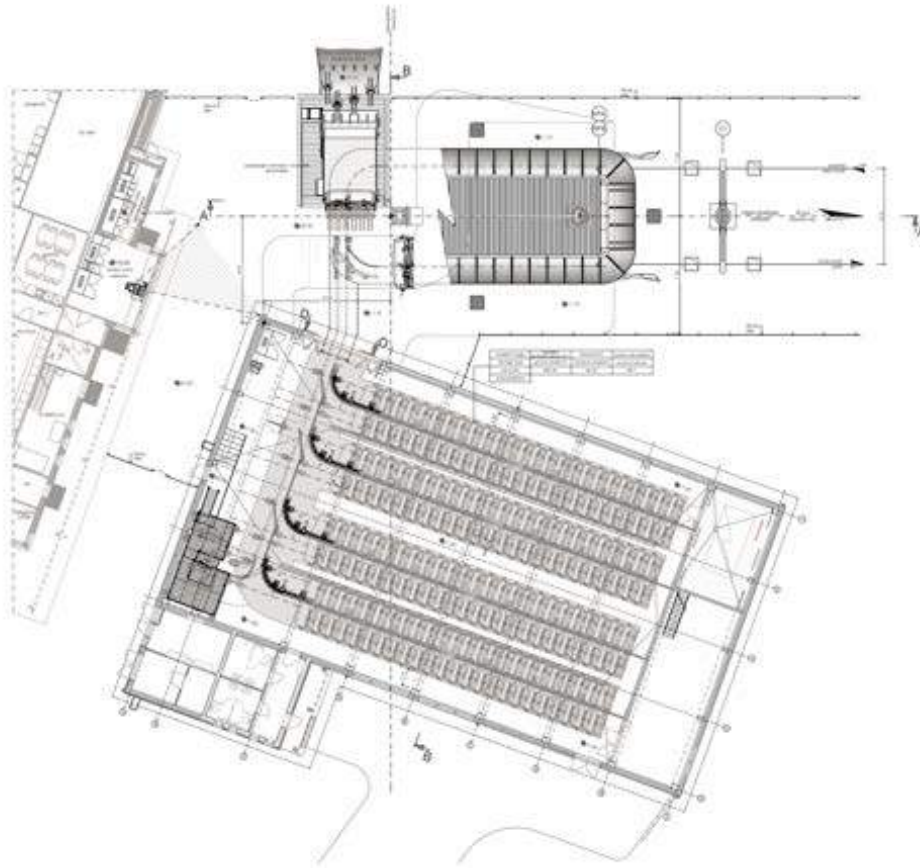
↕ 282 m

👤👤👤 3000 p/h

⚙️ 460 kW

☎️ 99

⌚ 13













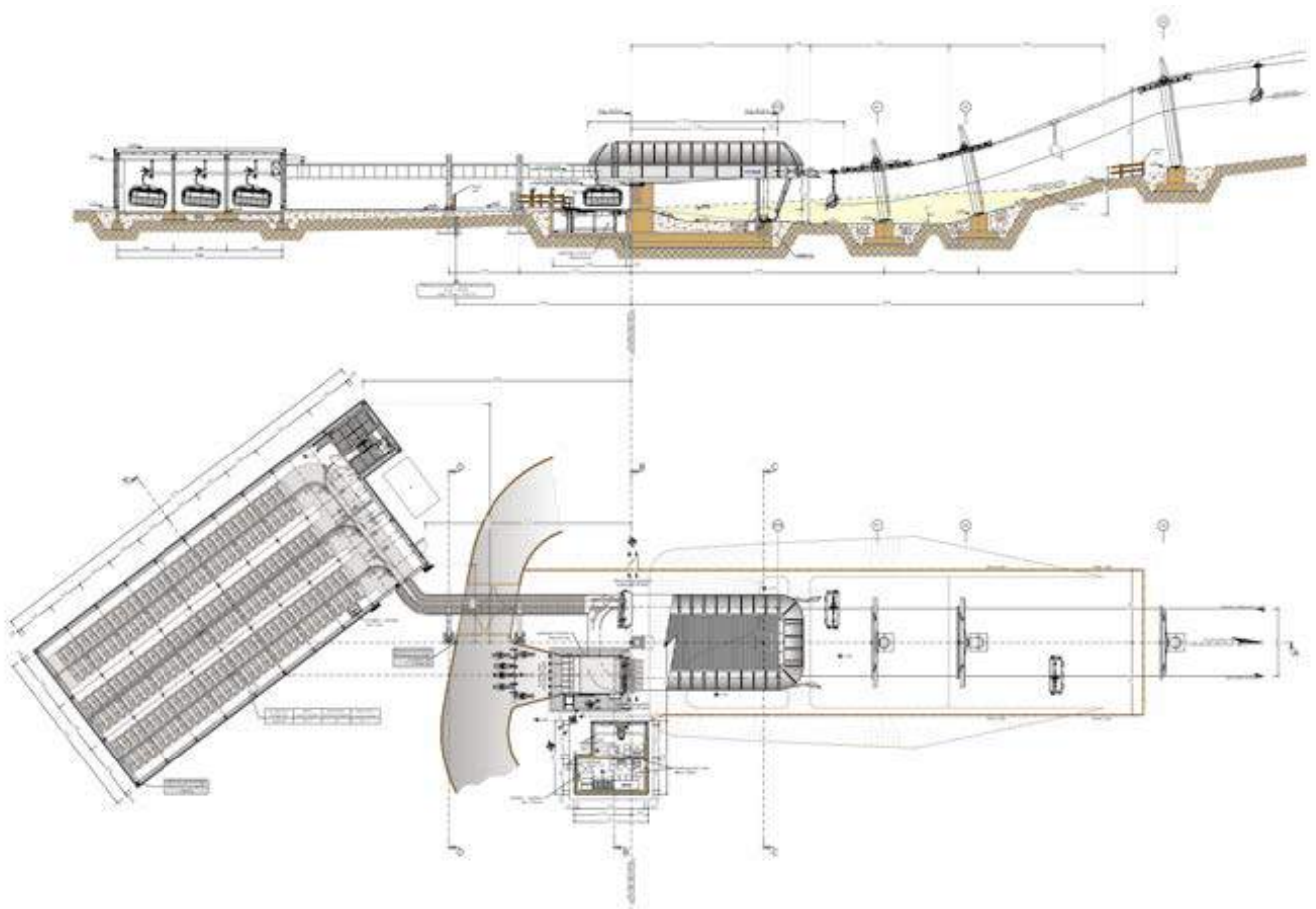




# CD6C ROHACE EXPRESS

Zuberec Rohace Spalen / SK

	1948 m		537 kW
	460 m		92
	2400 p/h		16











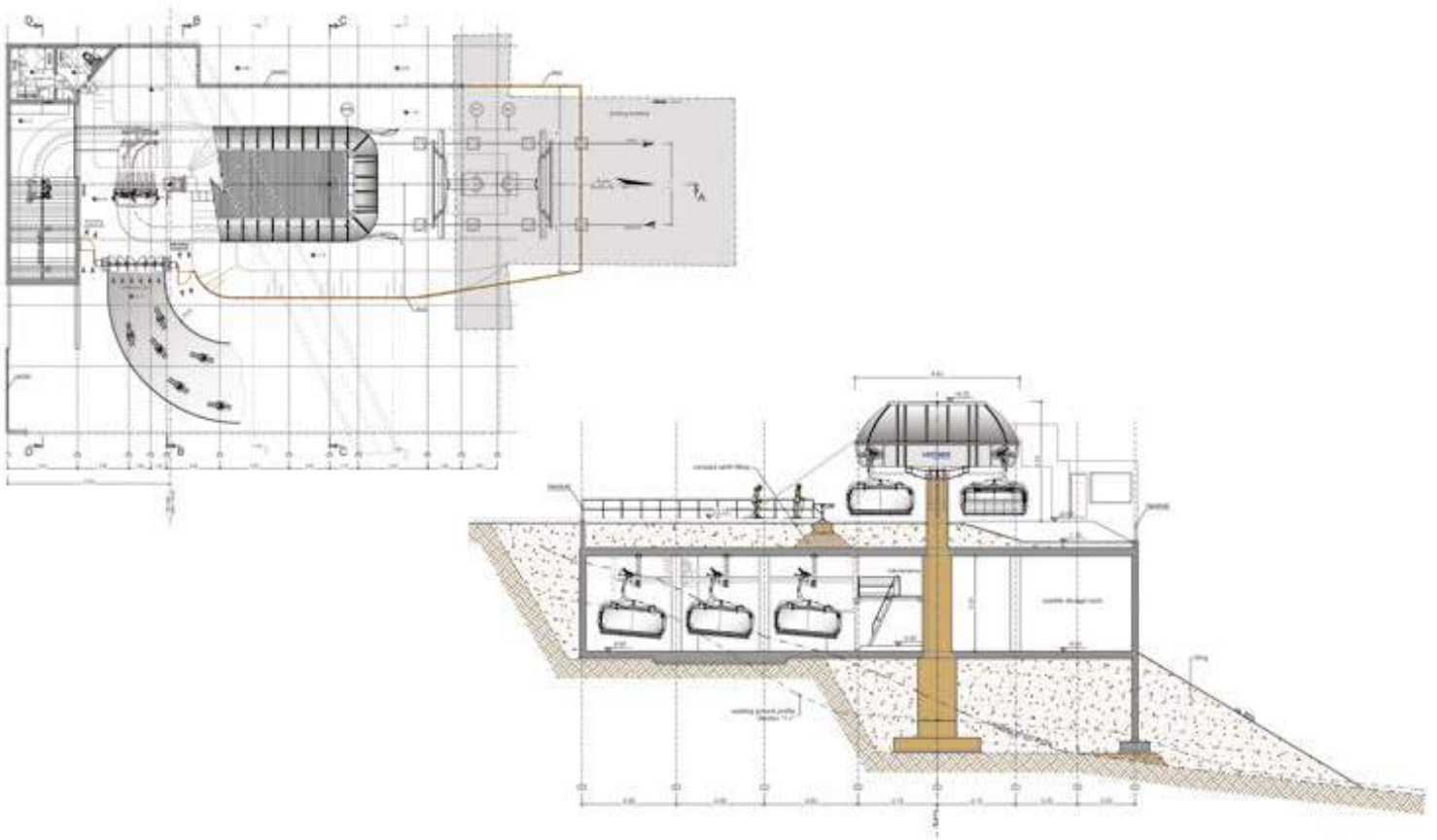




# CD6C KRČMAR

Kapaonik / CS







	1939 m		517 kW
	471 m		91
	2400 p/h		14

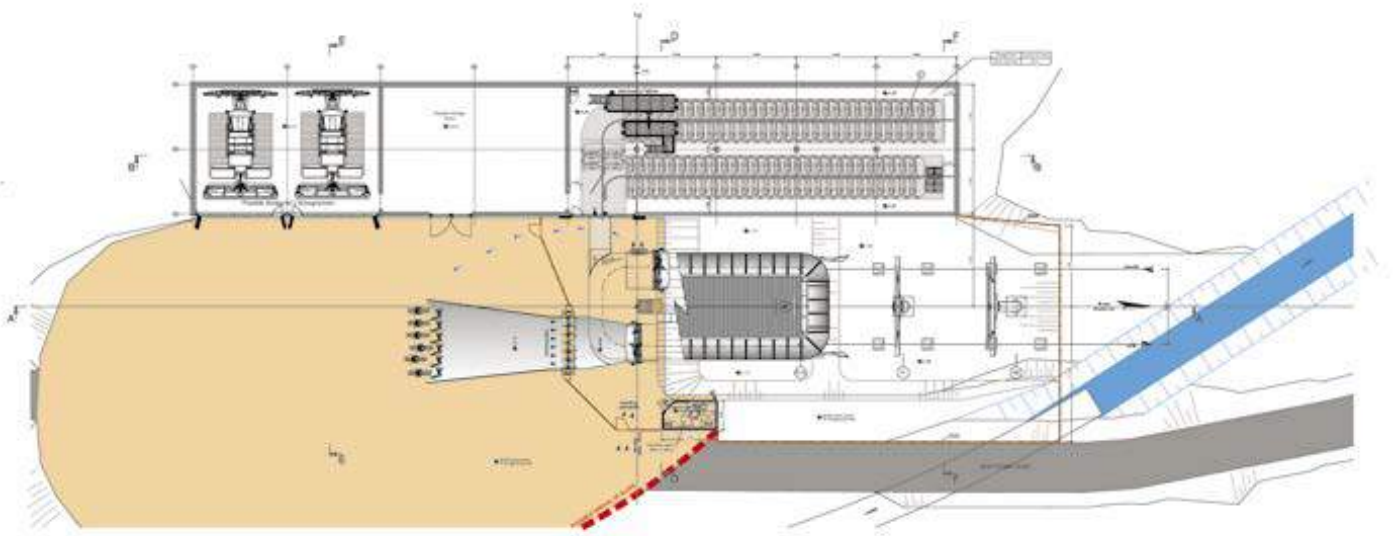




# CD6C GVOZDAC

Kapaonik / CS

	1234 m		434 kW
	381 m		60
	2400 p/h		11









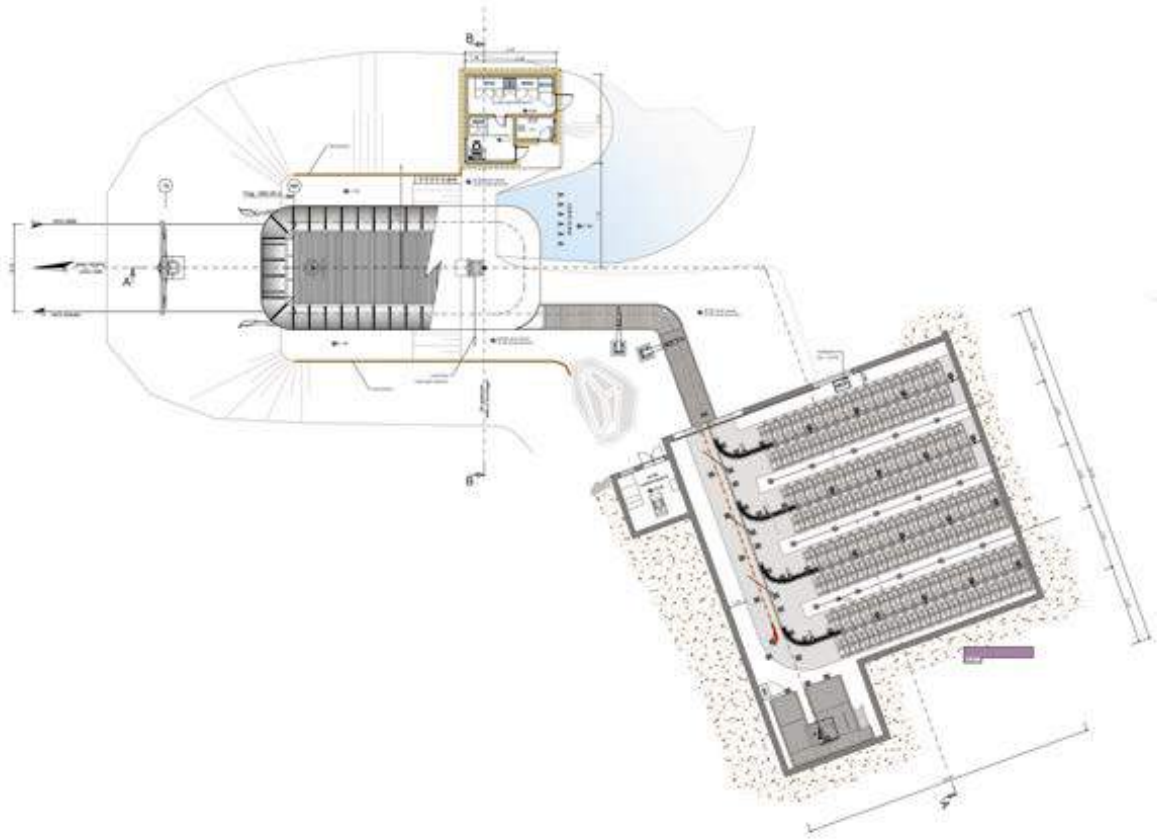




# CD6 TSCHEIN

Welschnofen – Nova Levante / IT

	1885 m		441 kW
	378 m		74
	2000 p/h		16











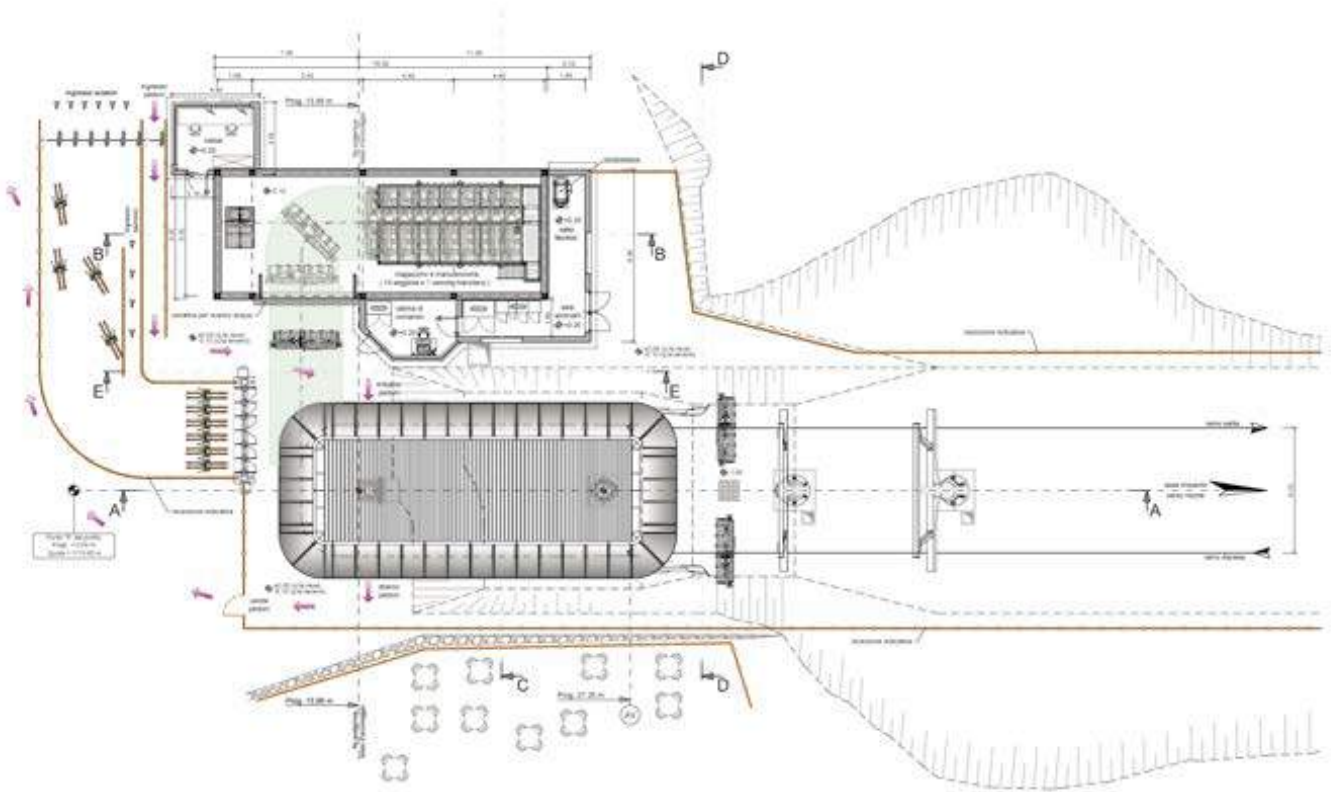




# CD6 PRALONGIA

Corvara in Badia / IT

	1162 m		315 kW
	310 m		42
	1800 p/h		11













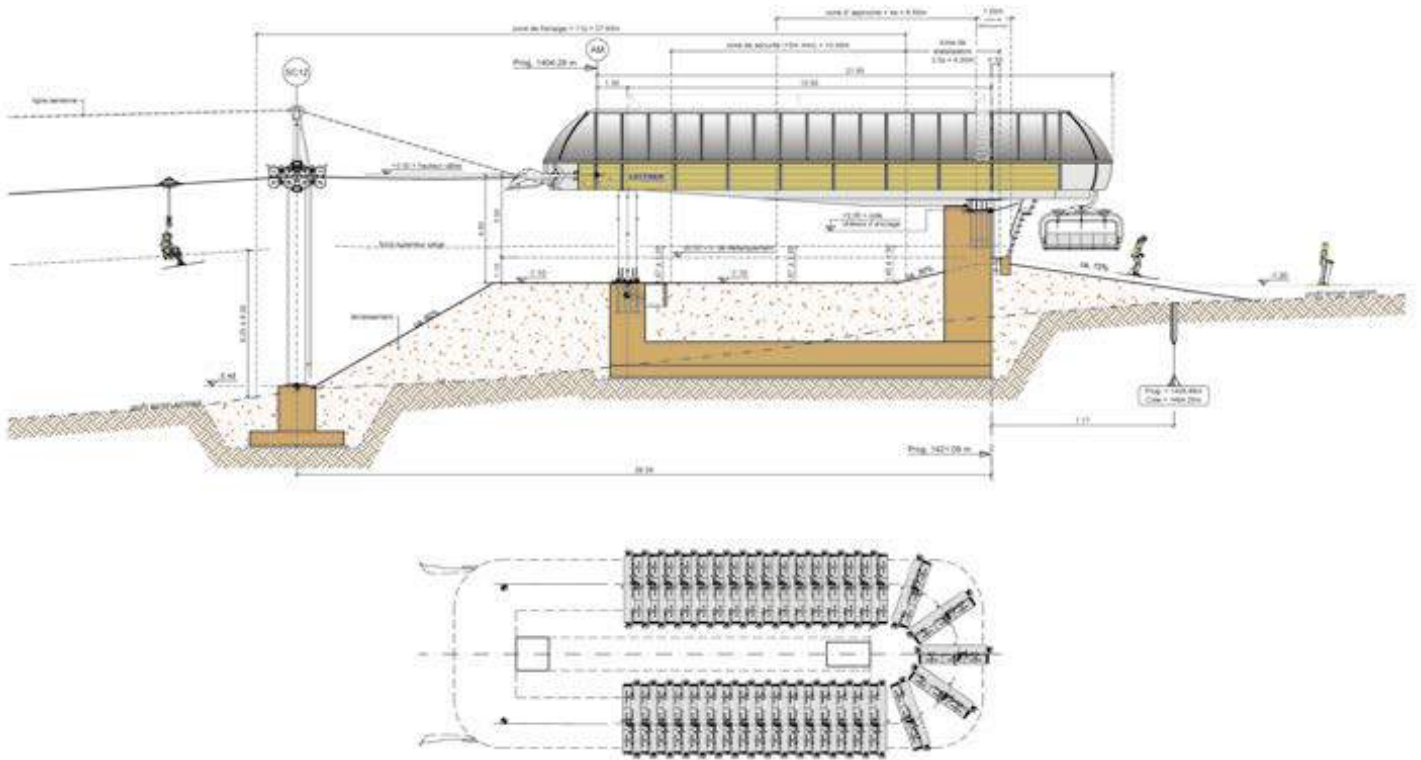




# CD6 BURON DU BAGUET

Le Lioran / FR

	1350 m		2 x 428
	226 m		62
	3000 p/h		12











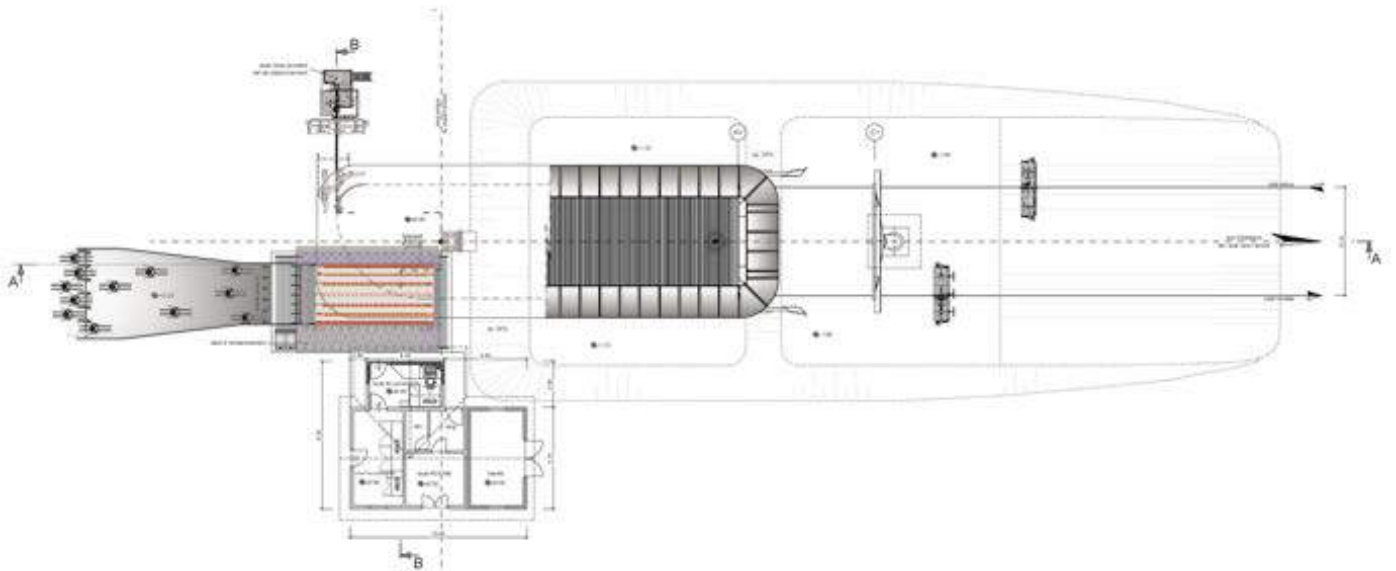




# CD6 MONT JOUX

St Gervais / FR

	999 m		710 kW
	318 m		62
	3600 p/h		10













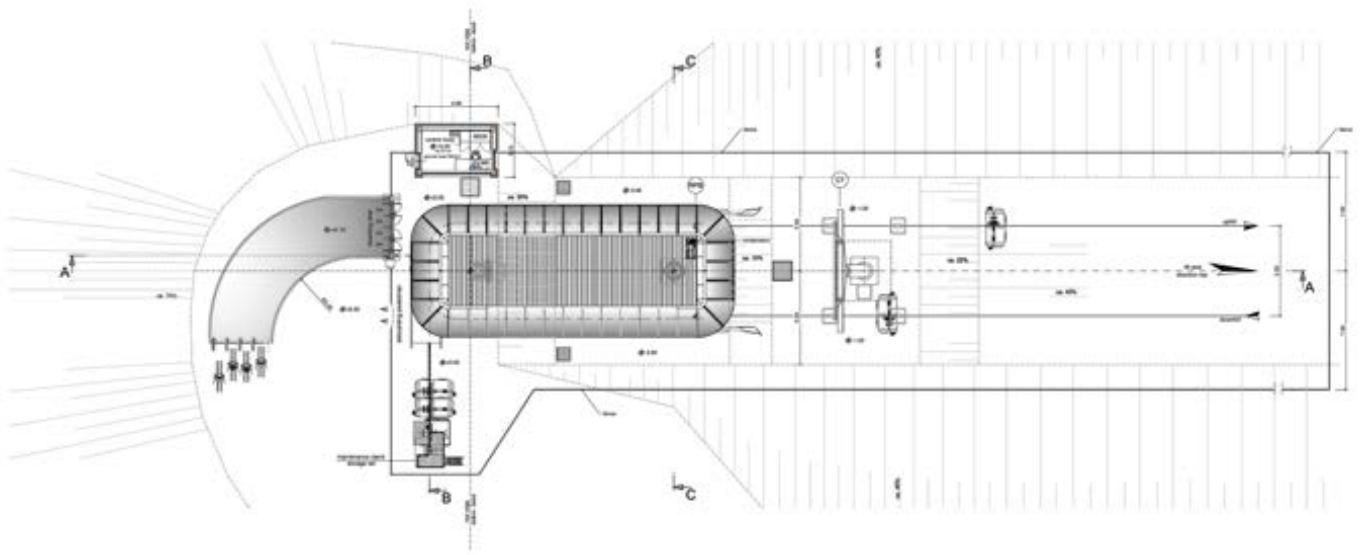




# CD4C CANKIRI

İlgaz / TR

	862 m		193 kW
	192 m		40
	1498 p/h		9











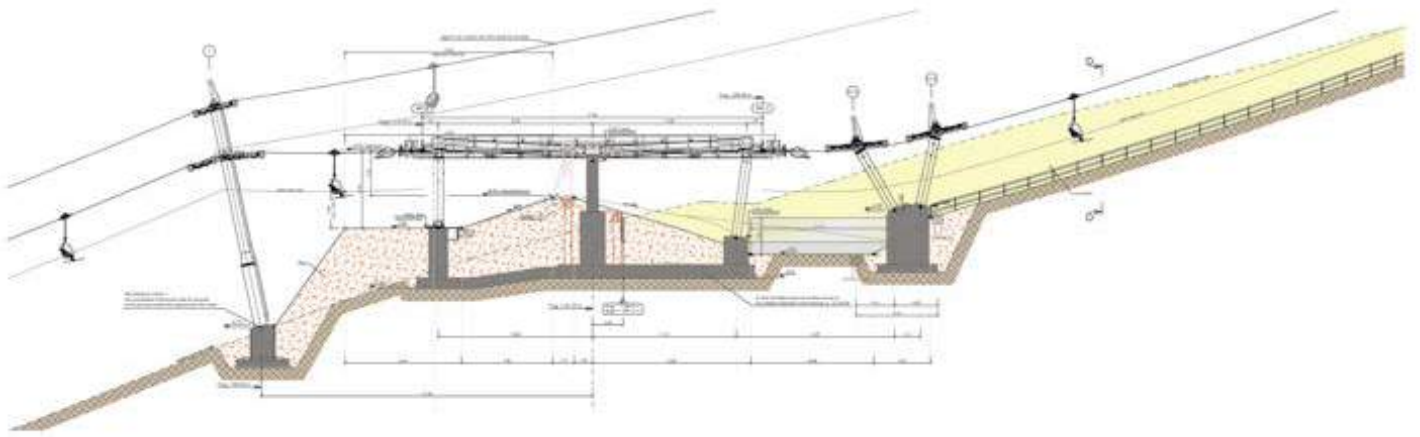
**LEITNER**<sup>®</sup>  
ropeways

**LEITNER**  
ropeways

# CD4C SIVAS M2

Sivas / TR







 2226 m	 353 kW
 594 m	 77
 1186 p/h	 14

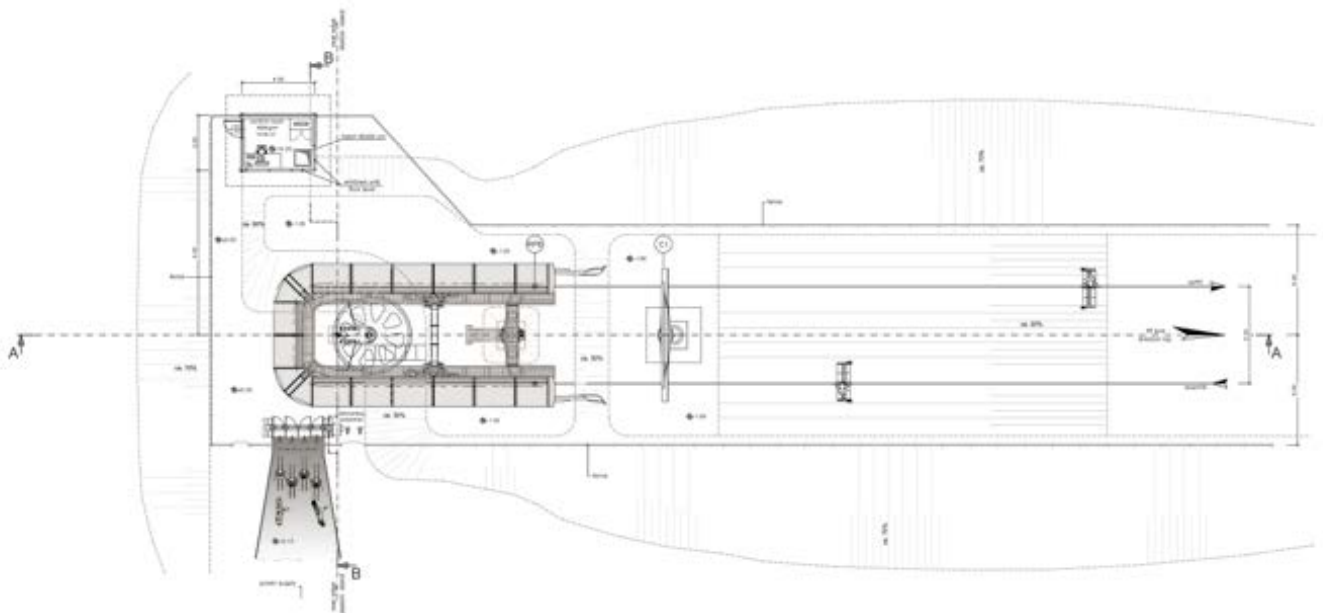




# CD4 EKSPRESSHEIS RØLDAL

Roldal / NO







	1158 m		270 kW
	264 m		76
	2200 p/h		11

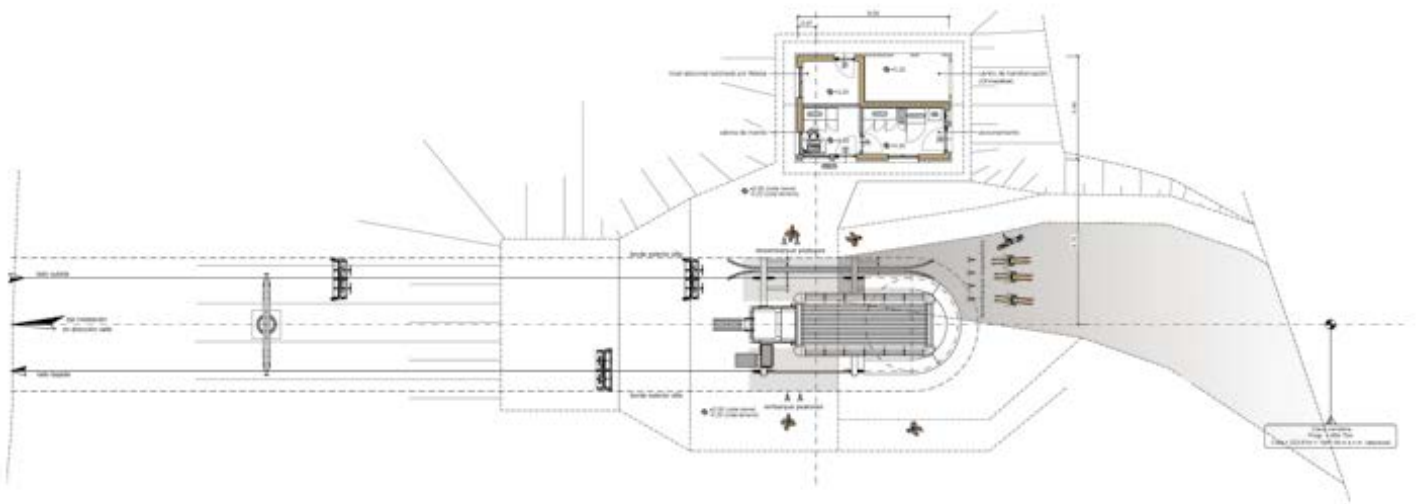




# CF4 VALDELINARES

Valdelinares / ES

	947 m		195 kW
	216 m		105
	2030 p/h		11



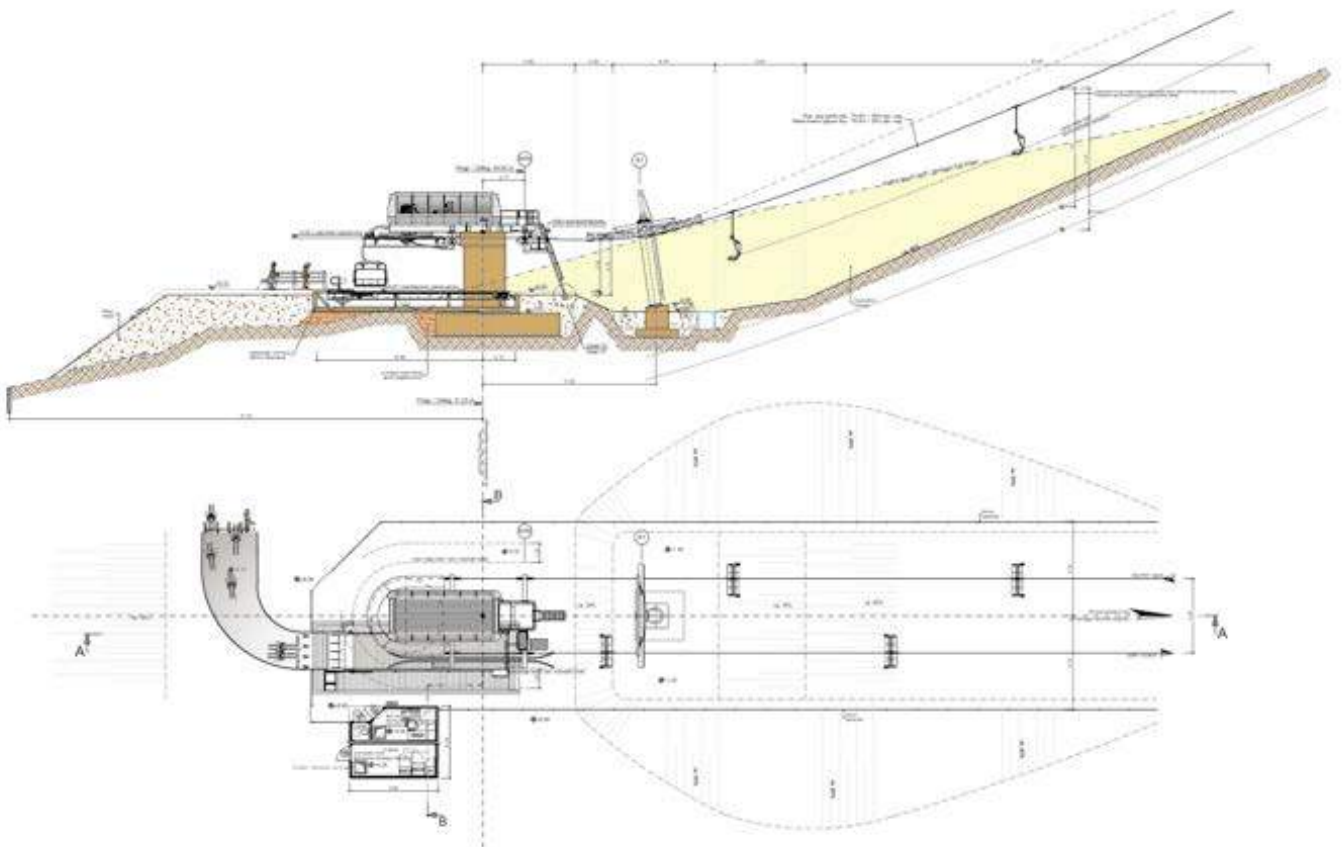




# CF4 WISLA SKOLNITY

Wisla / PL

↗ 738 m	⊕ 154 kW
↕ 201 m	☎ 82
👤 2000 p/h	⌚ 11





# IF186 LÄRCHWAND

Kaprun / AT

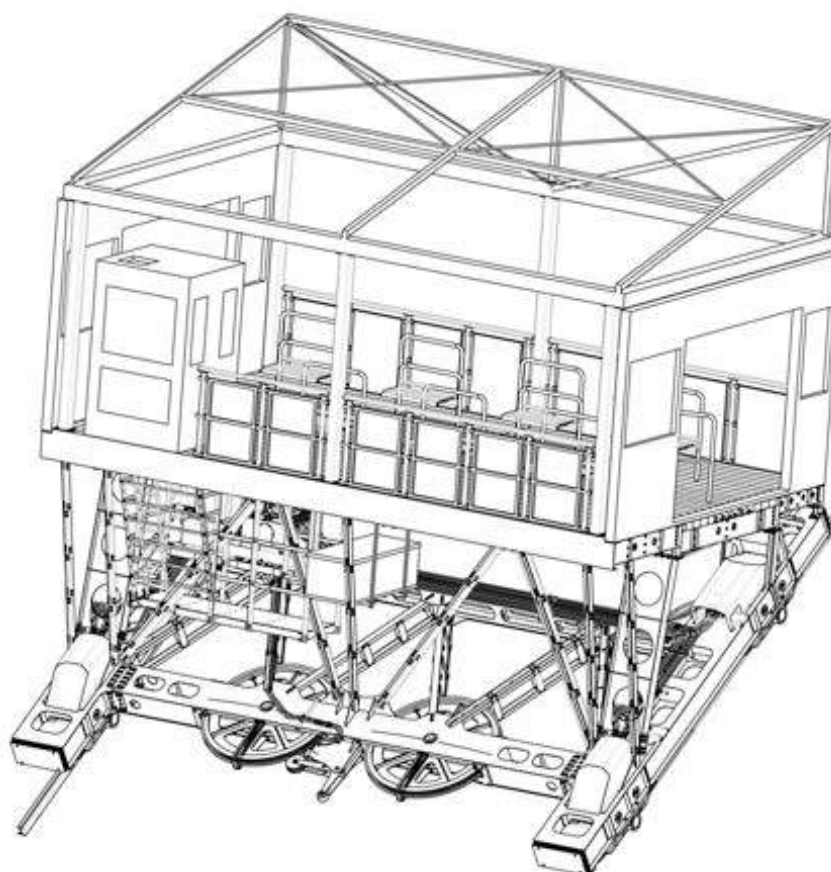
↗ 810 m

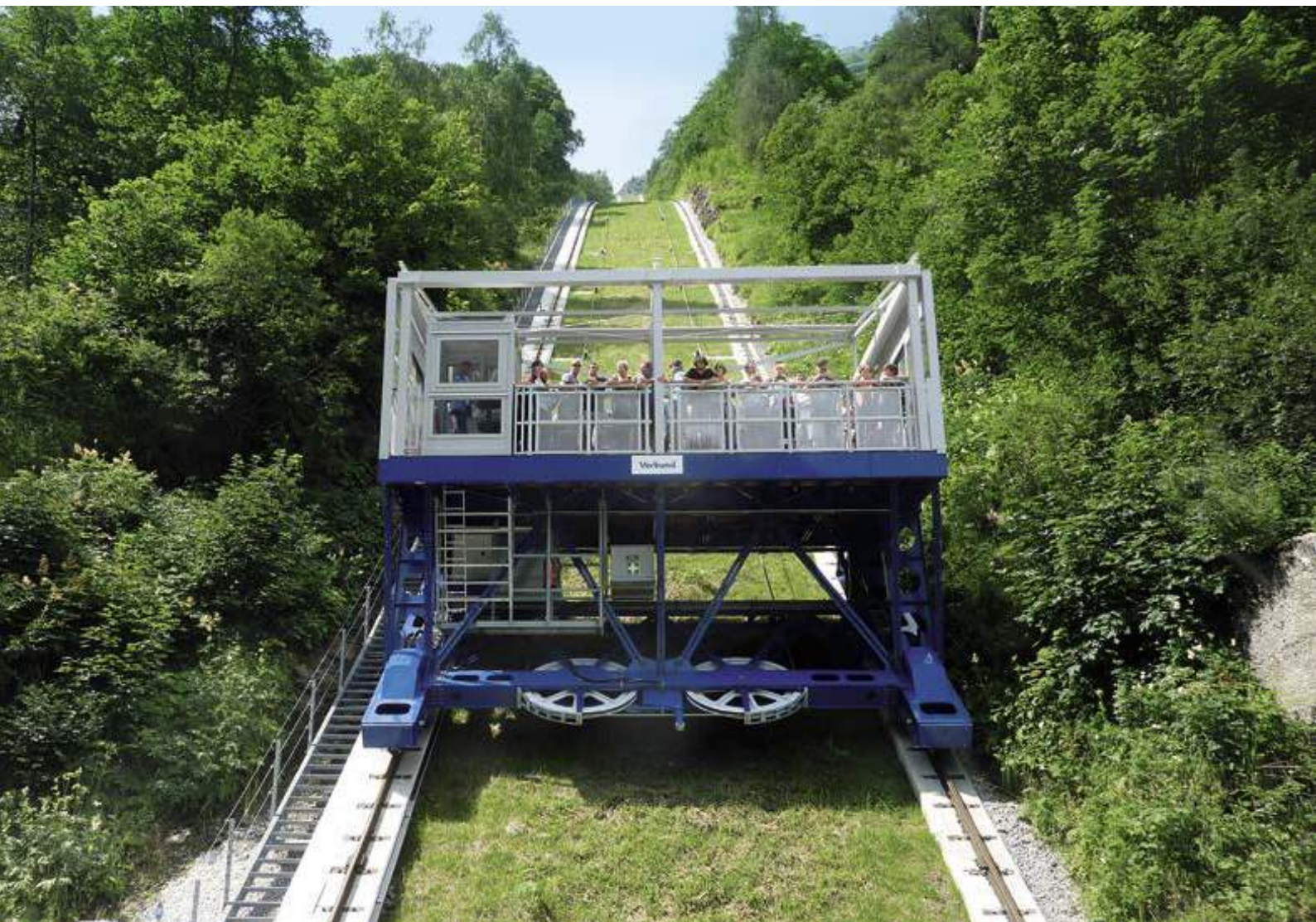
↕ 431 m

👤👤👤 900 p/h

⚙️ 2x500 kW

🚃 1

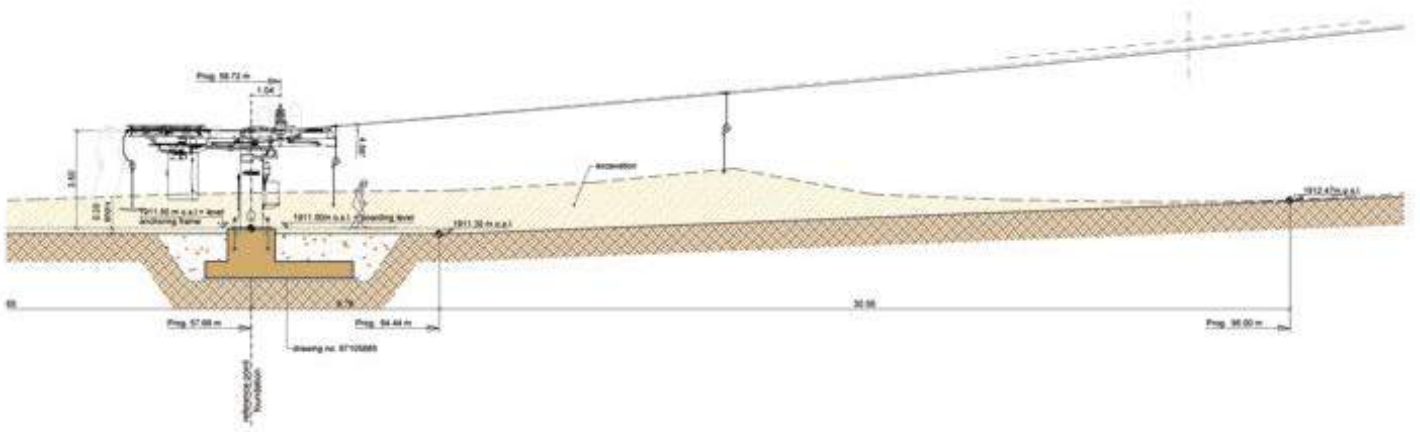




**SL2 TAVAS M1**

Tavas Bozdag / TR

↗	593 m	⊕	38 kW
↕	120 m	☑	31
👤👤👤	500 p/h	⌋	6










# Erfolge 2014







## GD10 GOLZENTIPPBAHN

Golzentipp / AT

	1679 m
	653 m
	1495 p/h
	469 kW
	27
	12





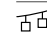

## GD8 BOREST

Kolfuschg – Colfosco / IT

	1294 m
	59 m
	3300 p/h
	358 kW
	63
	11


## GD8 VILLARDS

Les Arcs / FR

	573 m
	119 m
	2400 p/h
	400 kW
	26
	7

## GD10 STAND-XPRESS I

Lenk / CH

	886 m
	396 m
	2400 p/h
	435 kW
	29
	8

## GD8 DREI ZINNEN

Sexten – Sesto / IT

	2033 m
	655 m
	2200 p/h
	780 kW
	60
	13







## GD8 BYLIFTEN

Funäsdalen / SE

	862 m
	316 m
	1474 p/h
	370 kW
	22
	7






## GD10 STAND-XPRESS II

Lenk / CH

	2151 m
	627 m
	2400 p/h
	660 kW
	59
	12







## GD8 STIERGARTEN

Sexten – Sesto / IT

	1791 m
	424 m
	1800 p/h
	660 kW
	50
	14





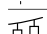

## GD8 BURSA I + II

Bursa / TR

	4625 m
	1239 m
	1500 p/h
	1056 kW
	95
	25



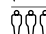



## GD10 YENIMAHALLE I + II

Ankara / TR

	1430 m
	126 m
	2400 p/h
	440 kW
	54
	12



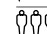



## GD8/10 MOLVENO PRADEL

Molveno / IT

	951 m
	455 m
	2000 p/h
	500 kW
	33
	9

## GD8 BURSA III




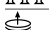

Bursa / TR

	4213 m
	164 m
	1500 p/h
	424 kW
	81
	19





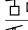
**GFR 2-2-8 SINPAS**

Ankara / TR

	417 m
	136 m
	400 p/h
	200 kW
	4
	7




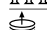

**CD6C PANORAMABAHN**

Obertauern / AT

	911 m
	261 m
	2600 p/h
	349 kW
	49
	8



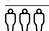
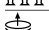

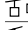
**CD6C LEVI SOUTH**

Levi / FI

	1711 m
	282 m
	3000 p/h
	460 kW
	99
	13



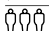
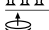

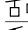
**AT15 PIC DE BURE**

Le Dévoluy / FR

	4040 m
	1061 m
	15 Pers. / 6000 kg
	500 kW
	2
	4



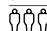
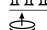

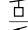
**CD6C GVOZDAC**

Kapaonik / CS

	1234 m
	381 m
	2400 p/h
	434 kW
	60
	11




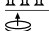

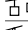
**CD6 BURON DU BAGUET**

Le Lioran / FR

	1350 m
	226 m
	3000 p/h
	2 x 428
	62
	12




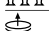

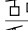
**CD6 PRALONGIA**

Corvara in Badia / IT

	1162 m
	310 m
	1800 p/h
	315 kW
	42
	11




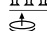

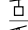
**CD6C KRČMAR**

Kapaonik / CS

	1939 m
	471 m
	2400 p/h
	517 kW
	91
	14



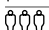
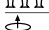

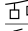
**CD6 MONT JOUX**

St Gervais / FR

	999 m
	318 m
	3600 p/h
	710 kW
	62
	10



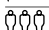
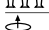

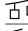
**CD6 TSCHEIN**

Welschnofen – Nova Levante / IT

	1885 m
	378 m
	2000 p/h
	441 kW
	74
	16



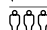
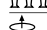

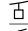
**CD6C MILCHHÄUSLEXPRESS**

Lenggries / DE

	1774 m
	456 m
	2800 p/h
	636 kW
	97
	15

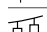
**CD6C VÄST EXPRESS**

Vemdalen / SE

	1177 m
	319 m
	2800 p/h
	350 kW
	56
	11


**CD6C ROHACE EXPRESS**

Zuberec Rohace Spalen / SK

	1948 m
	460 m
	2400 p/h
	537 kW
	92
	16

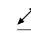



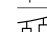
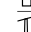
**CD4C SIVAS M3**

Sivas / TR

	1636 m
	504 m
	1002 p/h
	250 kW
	48
	10






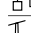
**CF4 WISLA SKOLNITY**

Wisla / PL

	738 m
	201 m
	2000 p/h
	154 kW
	82
	11



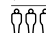

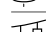
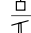
**CD4 EKSPRESSHEIS RØLDAL**

Roldal / NO

	1158 m
	264 m
	2200 p/h
	270 kW
	76
	11



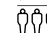

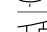
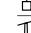
**CD4C TAVAS M2**

Tavas Bozdag / TR

	1664 m
	391 m
	1000 p/h
	263 kW
	49
	11


**SL2 SIVAS M1**

Sivas / TR

	804 m
	155 m
	597 p/h
	39 kW
	48
	8



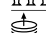

**CD4C CANKIRI**

Ilgaz / TR

	862 m
	192 m
	1498 p/h
	193 kW
	40
	9

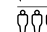

**CD4C TAVAS M3**

Tavas Bozdag / TR

	1411 m
	343 m
	900 p/h
	178 kW
	37
	8



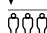



**SL2 TAVAS M1**

Tavas Bozdag / TR

	593 m
	120 m
	500 p/h
	38 kW
	31
	6






**CD4C SIVAS M2**

Sivas / TR

	2226 m
	594 m
	1186 p/h
	353 kW
	77
	14


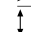
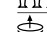

**CF4 VALDELINARES**

Valdelinares / ES

	947 m
	216 m
	2030 p/h
	195 kW
	105
	11




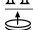

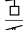
**SL1 DONICO**

Castione della Presolana / IT

	213 m
	56 m
	900 p/h
	21 kW
	43
	2



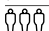
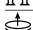
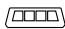
SL1 FURSETTREKK

Stranda / NO

	924 m
	282 m
	783 p/h
	75 kW
	127
	9

IF186 LÄRCHWAND

Kaprun / AT

	810 m
	431 m
	900 p/h
	2x500 kW
	1

	geneigte Länge
	Höhenunterschied
	Förderkapazität
	Antriebsleistung
	Anzahl Fahrbetriebsmittel
	Anzahl Stützen
	Anzahl Fahrbetriebsmittel

## LEITNER ropeways



Sterzing (Italien)



Sterzing (Italien)



Telfs (Österreich)



Montmélian (Frankreich)



Grand Junction (USA)



Stará L'ubovňa (Slowakei)



