



REPORT

2018

LEITNER[®]
ropeways

LEITNER
ropeways

KitzSki
Comfortline S

KitzSki
Comfortline S



Successful worldwide





2018 was an extremely active year for LEITNER ropeways, with a total of 43 systems implemented in 15 countries. To mark its 130th anniversary, the company once again paid close attention to the striking positioning of its own brand values and ensured targeted development for technological highlights in the industry. This successful work is and remains rooted in the growing expertise of the employees across generations. After all, what was learned in a small workshop for the construction of agricultural machines, sawmills, water turbines, and material ropeways back in 1888 has not lost its importance in 2018. The highest level of quality of the in-house development, paired with expert production and appealing design is nowadays as crucial as ever for the products of LEITNER ropeways. In addition to the launch of the world's highest 3S gondola lift at the Klein Matterhorn in Zermatt, LEITNER ropeways also knew how to win people over with new product innovations. Special attention was paid to the stations and the Symphony 10 cabin, which were developed together with the Italian design company Pininfarina. The combination of high-quality architecture and modern technology is unique and is enthusing more and more customers. Since last year, the new LEITNER ropeways stations have been in operation in several ski resorts in Italy, Austria, France, and Sweden, for example, proving that maximum efficiency in operation and attractive design are the latest trends.



RETROSPECTIVE

ITALY

Comprehensive modernization on home turf

Among the highlights of the sixteen new systems in Italy is the connection between the Belpiano and Malga S. Valentino ski resorts on the Passo Resia with its two new 10-passenger gondola lifts. In the Gitschberg-Jochtal ski resort, the “Ski Express” gondola lift ensures a quick ascent. Furthermore, LEITNER ropeways has been busy constructing a Telemix system on Monte Cavallo in Vipiteno and a chairlift in the “3 Zinnen Dolomites” ski area. On the Alpe di Siusi, the modern “Mezdi” 6-seater chairlift is replacing an old one and the stations feature the Pininfarina design. The new “Roby” chairlift is providing comfortable transportation in Alta Badia. Thanks to a new 10-passenger gondola lift, skiers can now get from San

Martino di Castrozza in the Trentino ski resort to Valbonetta more quickly. In Champoluc, an 8-passenger gondola lift was designed to take guests to the ski resort as well as serve as a means of public transport. Further chairlifts and surface lifts were also installed between South Tyrol and Abruzzo.

AUSTRIA

New systems at winter sports hotspots

Thanks to a new 10-passenger gondola lift with higher capacity, winter sports enthusiasts can reach the Maiskogel from Kaprun. Diamond EVO 10-passenger cabins and Premium 8-seater chairs lend the new Telemix system for the Bergbahnen Obertauern a feeling of exclusivity. The new “Wimbachexpress” 10-pas-



Andermatt / CH

senger gondola lift in Hochzillertal-Kaltenbach provides access to new ski slopes and a perfect area for freeriders. This is just like the new “Raintal” system in Kitzbühel, fitted out with Symphony cabins – a new generation of ropeways owing to its ergonomically shaped and heated single seats. The “Brunelle” chairlift also cuts the travel time in half on the Kitzbüheler Horn and provides a premium feel with its genuine leather cover and seat heating.

GERMANY, SWITZERLAND, FRANCE

From revitalization to a world record

In the Mount Jenner area at Königssee lake, the 10-passenger gondola lifts and the “Jennerwiesen” 6-seater chairlift are testimony to the modernization strategy. The new rope-

way on the Klein Matterhorn in Zermatt served as a record as well as a premiere. The first across the globe with some of its Symphony cabins adorned with Swarovski® crystal beads, the “Matterhorn glacier ride” is the world’s highest 3S gondola lift. The 10-passenger gondola lift “Schneehüenerstock-Express” was also implemented in the SkiArena Andermatt-Sedrun in Switzerland, creating an important link between Andermatt and Sedrun and a convenient return option from the Oberalp Pass to the Schneehüenerstock. A chairlift and two surface lifts were installed in Grands Montets, the French freeride paradise, and LEITNER ropeways implemented a 10-passenger gondola lift with Diamond EVO cabins and Pininfarina stations in the Val Cenis Vanoise ski resort.



Sarajevo / BA

SCANDINAVIA

Strong positioning in northern Europe

In the popular Swedish ski resort of Hundfjället, the new “West Express” 8-seater chairlift was equipped with Pininfarina stations for the first time in Scandinavia. The ropeway leads right to the heart of the ski resort with a beginners’ area, enchanted forest, and Sweden’s steepest ski slope. In addition, there is more fun in store for skiers with three further LEITNER ropeways 6-seater chairlifts in Sweden and Norway. A new 6-seater chairlift is replacing the current 2-seater chairlift in the family ski area of Järvsöbacken, three hours north of Stockholm. In Borlänge, the implementation of the “Götes Express” 6-seater chairlift marks the impressive fifth LEITNER ropeways installation in the Romme Alpin ski resort. A new

surface lift is increasing transport capacity in the winter sports area of Stöten i Sälen and, in the Norwegian municipality of Øyer near Lillehammer, the new “Hafjelltoppen” 6-seater chairlift is replacing a surface lift.

BOSNIA, SLOVAKIA, POLAND

Renewed glory for a symbolic ropeway

A project of historic significance was the rebuilding of the ropeway on the Trebević, the local mountain of the Bosnian capital Sarajevo. The famous symbol of the 1984 Olympic Games was destroyed during the Yugoslav Wars. Today, a new 10-passenger gondola lift takes visitors to the 1,160-meter summit twice as fast as before. The cabin colors of red, black, green, blue, and yellow are remi-



Sacheon / KR

niscent of the city's Olympic glory days. In the year-round tourist destination Bachledka Ski & Sun, located on the Slovakian/Polish border, a 30-year old system is being replaced by a new 10-passenger gondola lift. The new 6-seater chairlift from LEITNER ropeways is now the longest system in the Szczyrk Mountain Resort, the largest ski resort in Poland.

BULGARIA, ROMANIA, TURKEY, SOUTH KOREA

Active in southeastern Europe right through to South Korea

In southeastern Europe, LEITNER ropeways has implemented three projects. New 6-seater chairlifts have been built in Bulgaria's largest ski area, Borovets Resort, and in Muntele Mic,

Romania, for example. In Turkey, an aerial tramway runs from the tourist destination of Beşikdüzü to the panoramic mountain Beşikdağ. A new tourist attraction was implemented in South Korea: the bicable gondola lift with 10-passenger cabins – a third of which are fitted out with glass floors – links the South Korean seaport of Sacheon with the Gaksan mountain, and over the water to the island of Choyang.



Voss / NO

Outlook

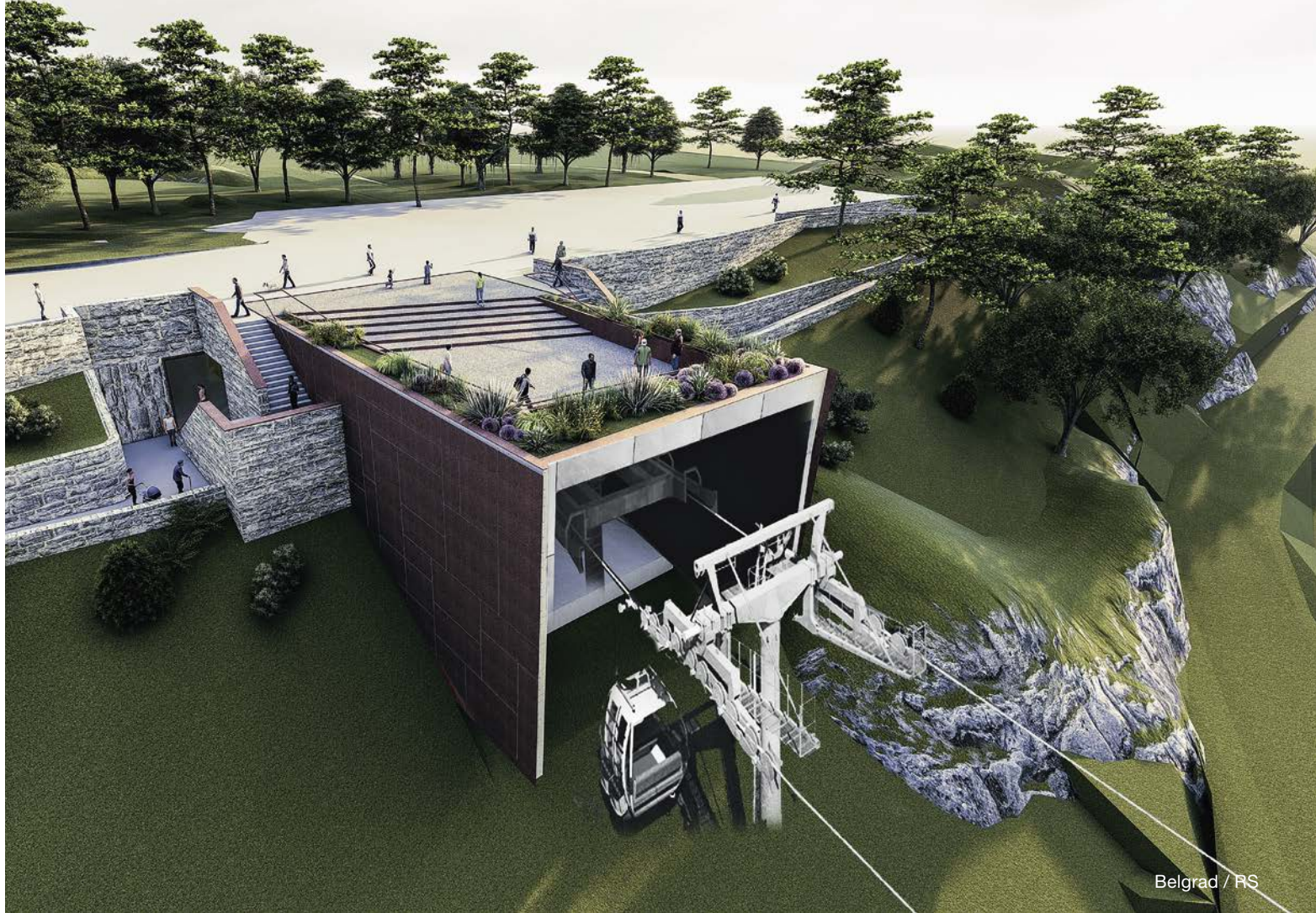
LEITNER ropeways started 2019 with a clear focus on its distinct strengths that are unique to the market. In this respect, it is crucial to continue concentrating on the unique combination of technology and design. The success story of the LEITNER DirectDrive system developed by the company and the new station and cabin models design by Pininfarina impressively confirmed the company's content-based alignment among existing as well as new customers.

On the North Island of New Zealand, LEITNER ropeways is building a 10-passenger gondola lift under special conditions on Mount Ruapehu. This mountain is an active volcano in the Tongariro National Park (UNESCO World Heritage site), which is still also owned by the Māori Iwi tribe as a sacred mountain. In the southern

half of the island state near the city of Queenstown, a new Telemix system for year-round operation is being developed in the Coronet Peak ski resort.

LEITNER ropeways is building the first 3S gondola lift in Scandinavia in the Norwegian tourist destination of Voss, a well-known ski resort. The system will be in operation from summer 2019 and will transport around 1,500 persons per hour in just seven minutes to Hangurstoppen (810 m) with its 13 Symphony cabins in Pininfarina design. The ropeway, which operates all year round, will also be merged with a recently developed transport hub with bus and ropeway lines in a single construction step.

Serbia's capital city, Belgrade, will be putting its faith in a ropeway for tourism purposes in



the future. LEITNER ropeways will be installing a 10-passenger gondola lift here, which will provide environmentally friendly mobility between the Novi Beograd part of town and the old town. Fitted out with Symphony 10 cabins, the system will be completed by the end of 2019. The route over the Sava River and the corresponding design of the ropeway with especially high supports are both particularly pleasing to the eye.

With an innovative facelift of the 30-year-old Dorfbahn Serfaus, LEITNER ropeways is demonstrating its skills in the area of air cushion technology. The funicular ropeway in the Tyrolean ski resort will be brought up to date with the latest standards of ropeway technology by summer 2019.

In India, the completion of the Dharamsala 8-passenger gondola lift is imminent. The system is designed to better cope with the strong influx of visitors to the home of the Dalai Lama and thus also reduce the high traffic levels at the tranquil mountain village at the foot of the Himalayas.

The further development of tourism facilities, which is supported by the government, is taking form in Montenegro with two projects. As well as a 6-seater chairlift in the new Bijelo Polje ski resort, this includes a new aerial tramway to the popular Dalović Cave: the ropeway, comprising two cabins, will traverse the ravine of the Bistrica River over a span of 800 meters.

Examples of 365 working days ...







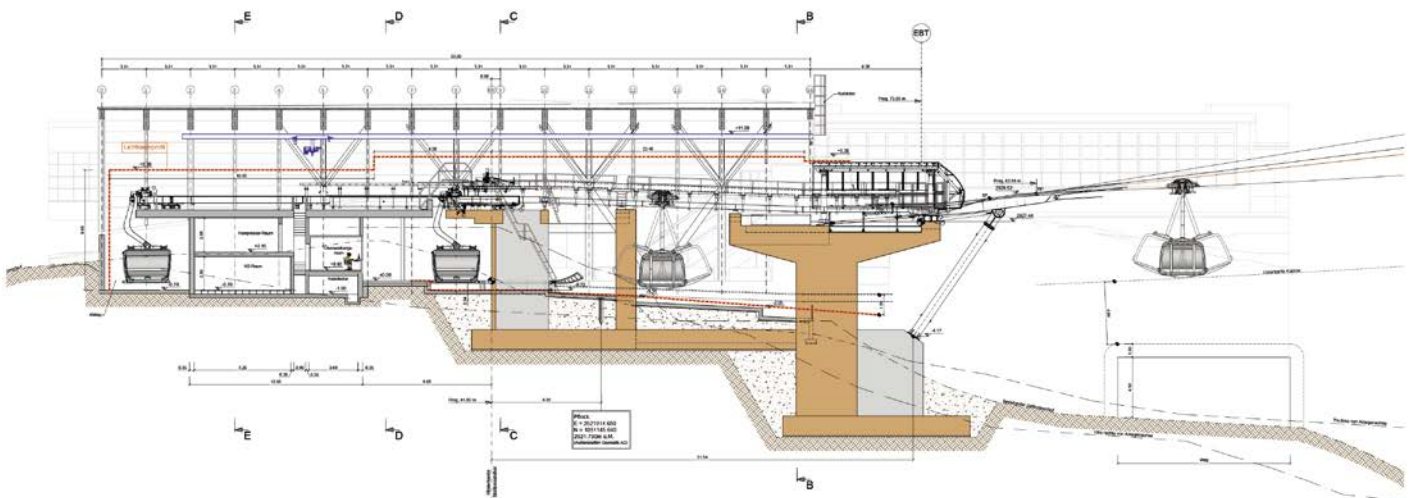
TD28 MATTERHORN GLACIER RIDE

Zermatt / CH

Inclined length	3765 m	Power	1072 kW
Vertical rise	898 m	Total number of vehicles	25
Transport capacity	2000 p/h	Total number of towers	3

With the opening of the world's highest 3S gondola lift on the Klein Matterhorn on September 29, 2018, several record-breaking facts have now been rolled into a single project. The four-kilometer journey to almost 4,000 meters above sea level leads to Europe's highest top station. The eight-kilometer long hauling rope weighs an impressive 67 tons and is freely suspended over a distance of three kilometers at the longest span of the system. For the first time in the history of LEITNER ropeways, thou-

sands of Swarovski® crystal beads refine the exterior on four of the 25 cabins designed by Pininfarina and also decorate the lettering on the comfortable seats. Thanks to another technical feature, these cabins offer a spectacular view during the nine-minute ride: After three minutes, at an altitude of 170 meters above ground, the cloudy glass floor clears up in seconds to provide guests with a magnificent view of the glacier landscape below.



















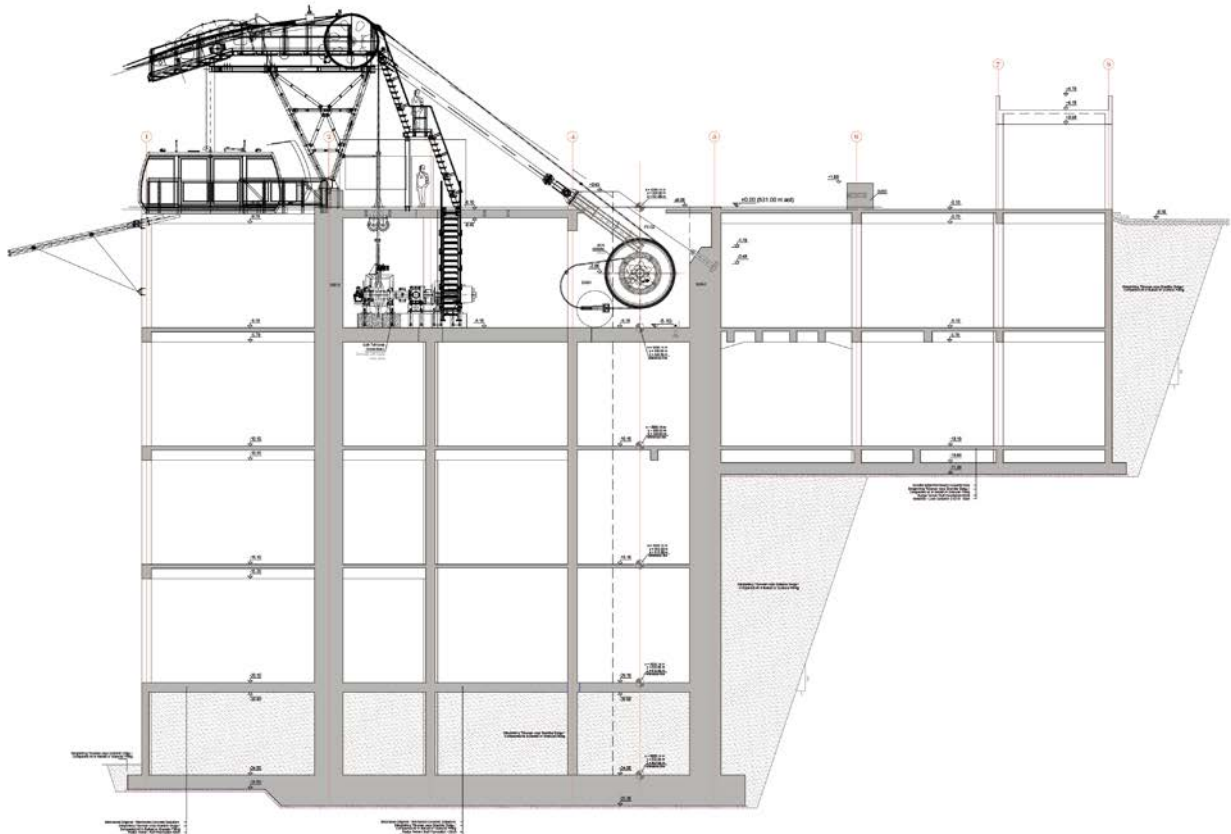
AT55 BESIKDÜZÜ

Besikdüzü / TR

Inclined length	3010 m	Power	400 kW
Vertical rise	521 m	Total number of vehicles	2
Transport capacity	400 p/h	Total number of towers	4

The new LEITNER ropeways aerial tramway in the Turkish coastal town of Beşikdüzü runs directly from the sea to the panoramic Beşikdağ mountain. It not only impresses with its fascinating views, but also with a number of exciting technical details. The two cabins are each equipped with 16 seats in addition to LED lights on the outside of the frame and

on the ceiling. In addition to state-of-the-art transport technology, the project also boasts special structural features. The ropeway spans a distance of three kilometers and is thus one of the longest ropeways on the Black Sea. The facility has four towers, the highest of which rises an astounding 72 meters into the air.











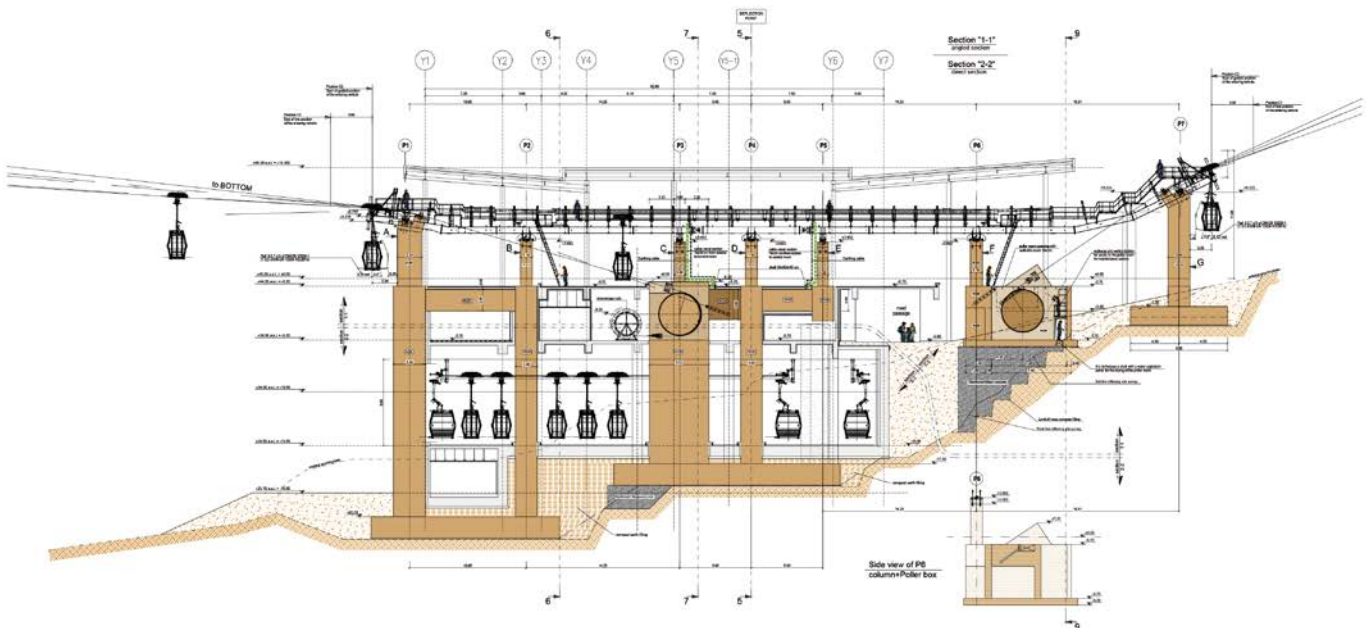
BD10 SACHEON

Sacheon / KR

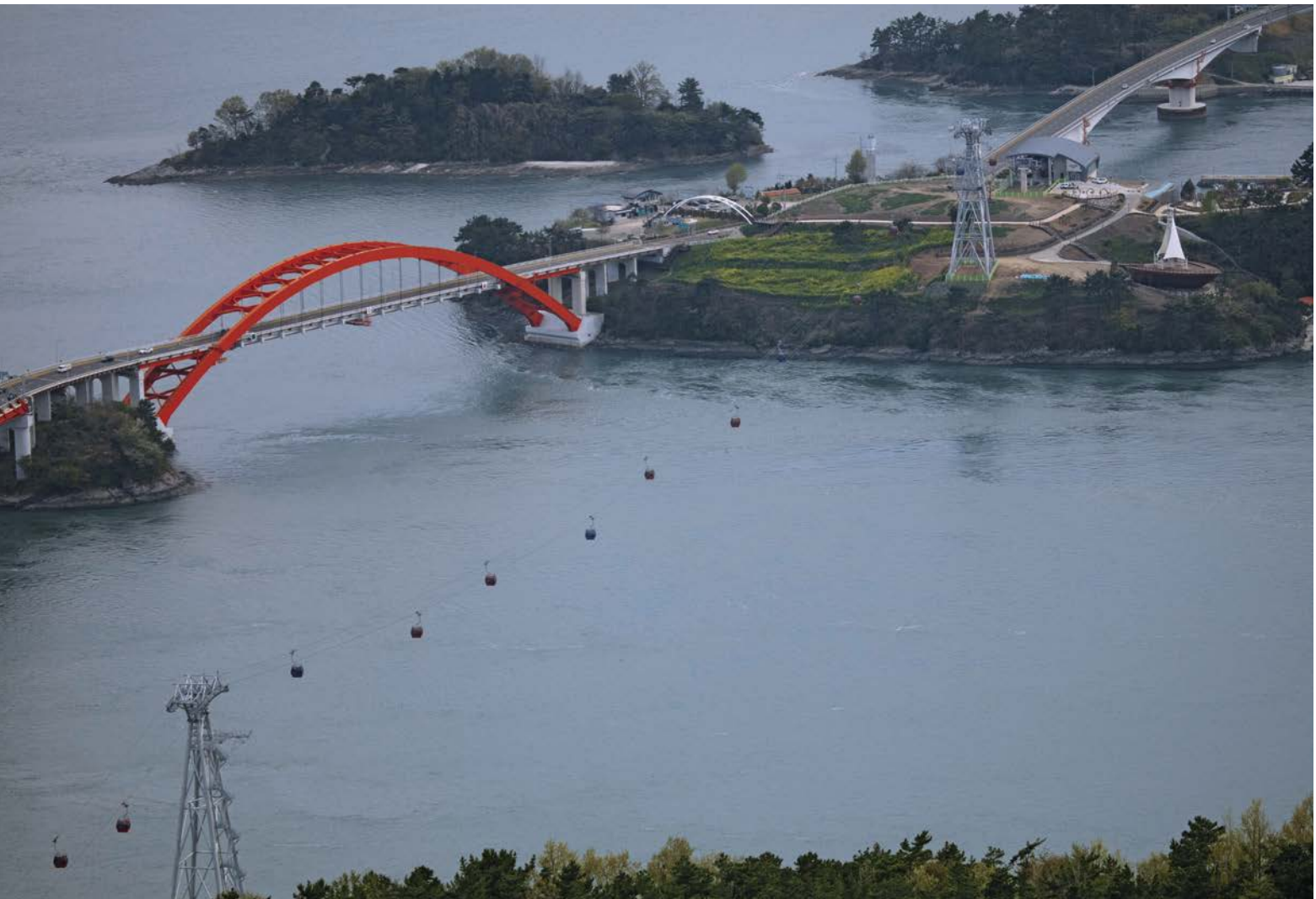
Inclined length	2490 m	Power	665 kW
Vertical rise	338 m	Total number of vehicles	42
Transport capacity	1300 p/h	Total number of towers	5

In the Hallyeohaesang National Park near the South-Korean port town of Sacheon, LEITNER ropeways has constructed a bicable gondola lift, which runs from a midway station on the mainland to the viewing platform on Gaksan mountain, and over the water to the island of Choyang. Due to the long spans and the fact that the route is exposed to the wind, the city management decided to implement the project in the form of a bicable gondola lift. This tech-

nology is the ideal solution for the 823 meter long span over the sea. The version with “smaller” cabins than 3S cabins was another reason to implement a bicable gondola lift. In this regard, the system of a bicable ropeway remains the best technology to ensure maximum operating safety and performance. Compared with a 3S gondola lift, the system is less expensive and can be implemented economically with smaller cabins.

















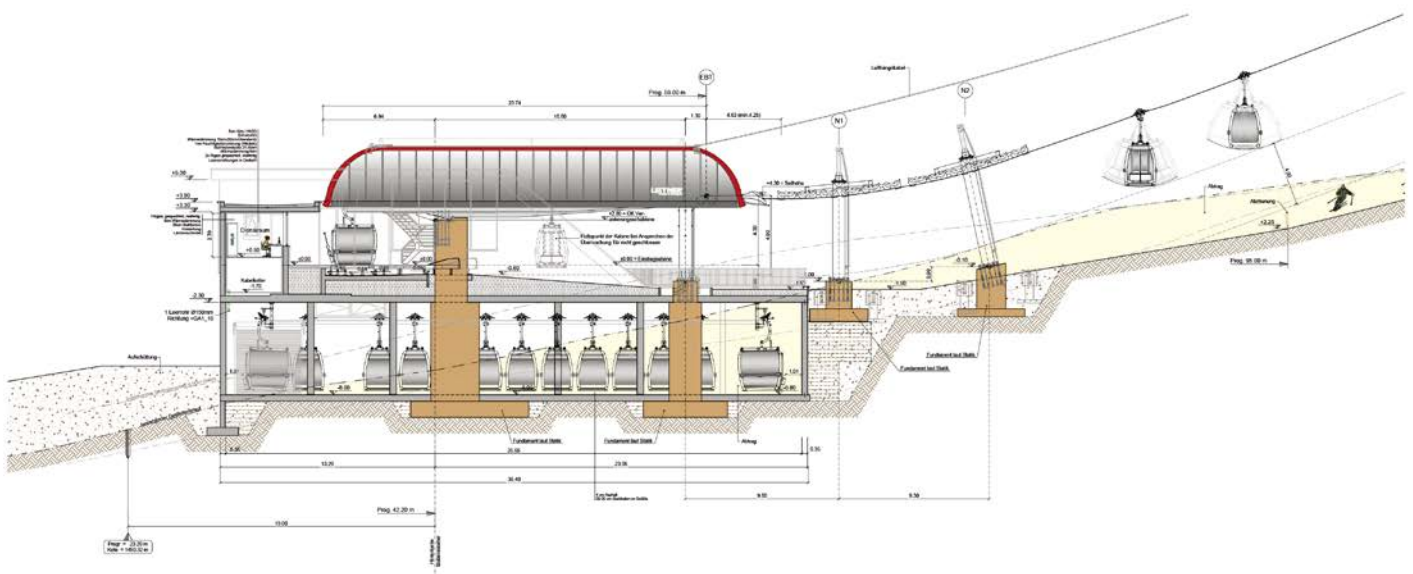
GD10 RAIN TAL

Kitzbühel / AT

Inclined length	1299 m	Power	529 kW
Vertical rise	505 m	Total number of vehicles	25
Transport capacity	1600 p/h	Total number of towers	10

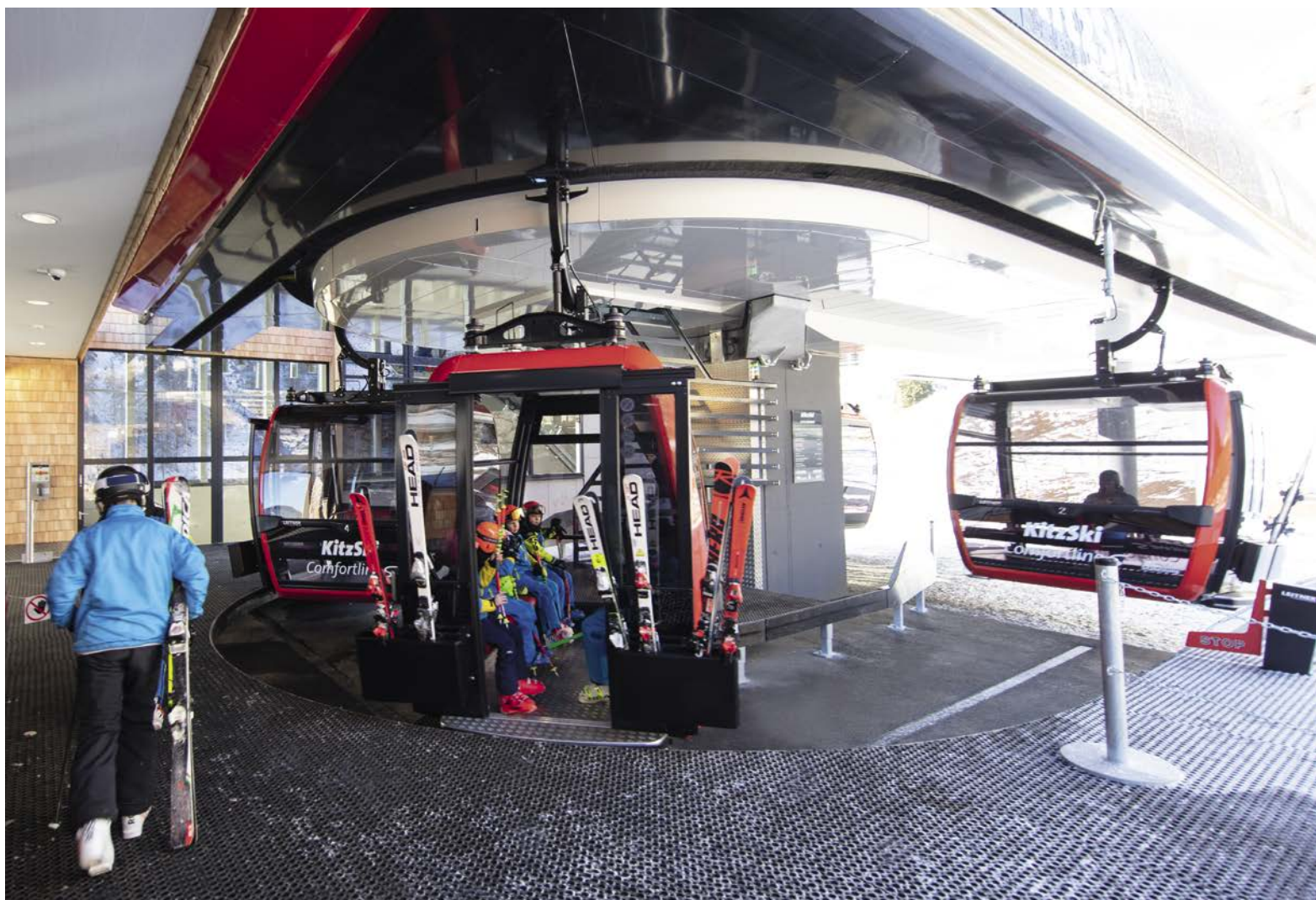
On December 8, 2018, two new ropeways from LEITNER ropeways were put into operation in Kitzbühel: the “Brunelle” 6-seater chairlift and the “Raintal” 10-passenger gondola lift. The new “Raintal” 10-passenger gondola lift offers even greater acceleration, cutting travel time by two-thirds. The configuration of the modern Symphony cabins visibly represents a new generation of ropeways: ergonomically designed single seats with seat heating and

genuine leather covers, and wider seats with more distance to the opposite row of seats, all ensure the travel experience will be utterly relaxing. The wider boarding area with sliding doors makes getting on and off easier. Thanks to the innovative and tasteful Pininfarina design, the cabins are wider at the top, thereby having a positive effect on the spaciousness of the interior.















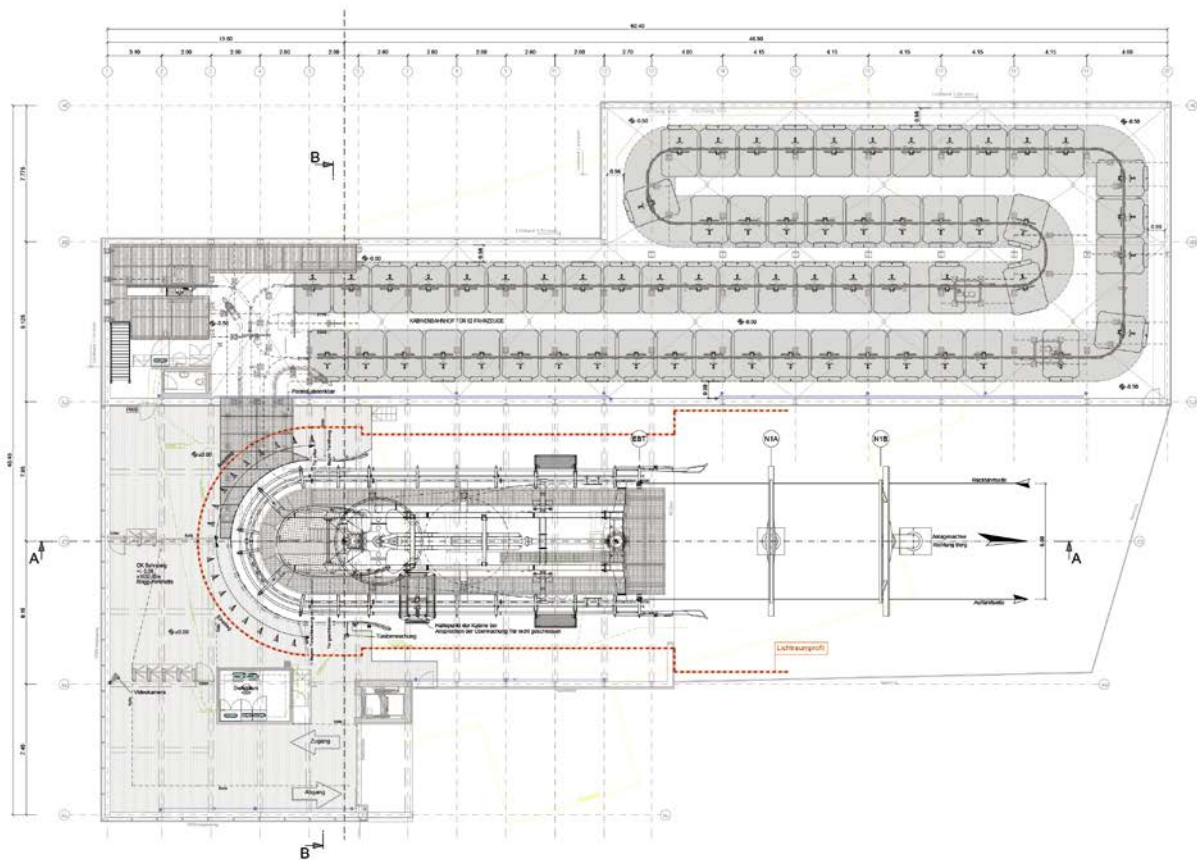
GD10 WIMBACHEXPRESS

Hochzillertal - Kaltenbach / AT

Inclined length	2175 m	Power	794 kW
Vertical rise	703 m	Total number of vehicles	62
Transport capacity	2620 p/h	Total number of towers	12

In the Hochzillertal-Kaltenbach ski resort, the new “Wimbachexpress” 10-passenger gondola lift ensures maximum transport quality and, thanks to the extended route, also opens up new ski slopes. The ropeway replaces an old 4-seater chairlift and has now significantly shortened the journey. Equipped with

Symphony 10 cabins, the ropeway offers the highest level of ride comfort. The new ropeway has also had an additional welcome effect for all freeriding fans: the new development on the Wetterkreuz means this perfect freeriding area is ready to explore.





LEITNER 13
HOCH ZILLERTAL
KALTENBACH







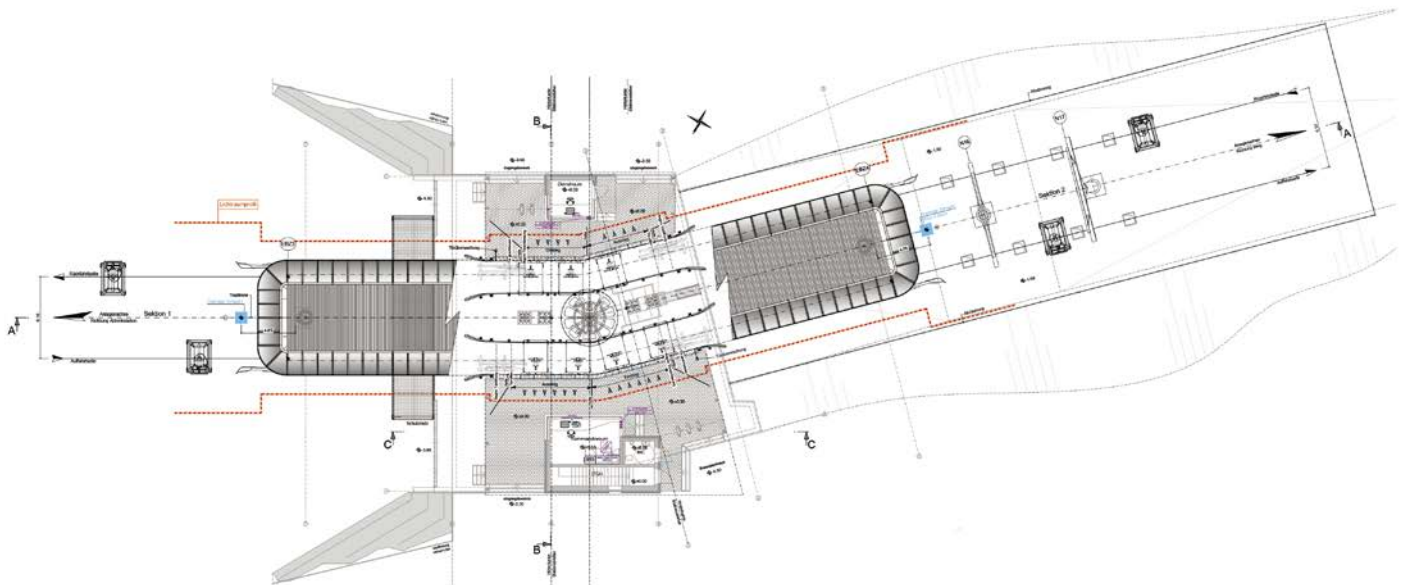
GD10 MK MAISKOGELBAHN

Kaprun / AT

Inclined length	3811 m	Power	1714 kW
Vertical rise	369 m	Total number of vehicles	123
Transport capacity	2800 p/h	Total number of towers	27

A long-held wish for a new gondola lift on the Maiskogel in Kaprun has slowly become reality. The new 10-passenger gondola lift ensures that guests can directly access the ski resort from their favorite winter sports destination and, in a further expansion step, they will be

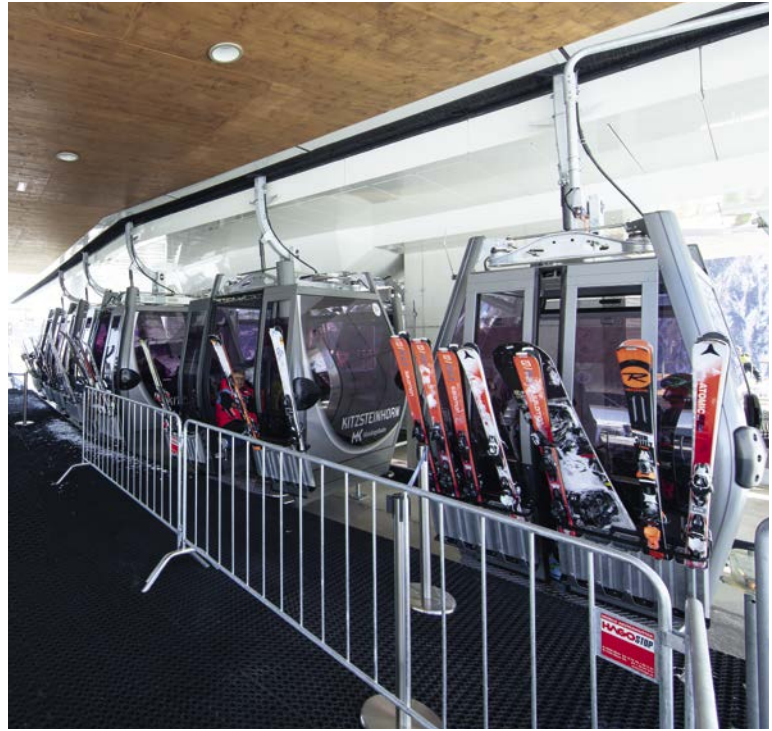
able to reach the glacier ski resort on the Kitzsteinhorn in a tricable gondola lift. The opening of the 10-passenger gondola lift to the Maiskogel is just the first step. In future, guests will also no longer need to travel to the lift station by car but instead can access it easily on foot.















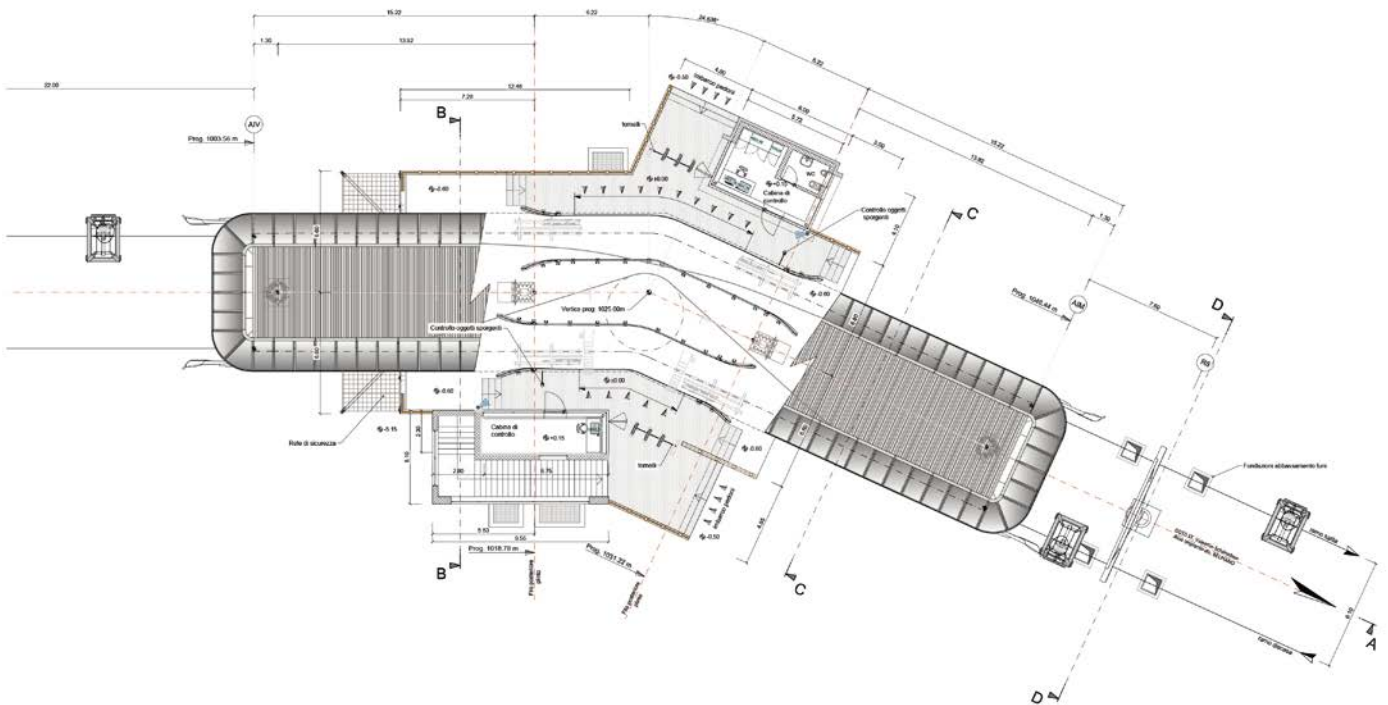
GD10 ST. VALENTIN - SCHÖNEBEN

Schöneben - Belpiano / IT

Inclined length	4324 m	Power	949 kW
Vertical rise	421 m	Total number of vehicles	73
Transport capacity	1600 p/h	Total number of towers	24

Ideally located on the borders with Austria and Switzerland, the South Tyrolean ski resorts of Haideralm and Schöneben were joined up with one another. Thanks to the new gondola lift they achieved a significant expansion to the range of services in terms of quality and quantity and, at the same time, allowing the

area to be used all year round. The "GD10 St. Valentin-Schöneben" runs from the village of San Valentino via a middle station to the Belpiano ski area. A special feature of the new 10-passenger gondola lift is its length: at 4.3 kilometers, the system is one of the longest of its kind.





SCHÖNEBEN

LEITNER







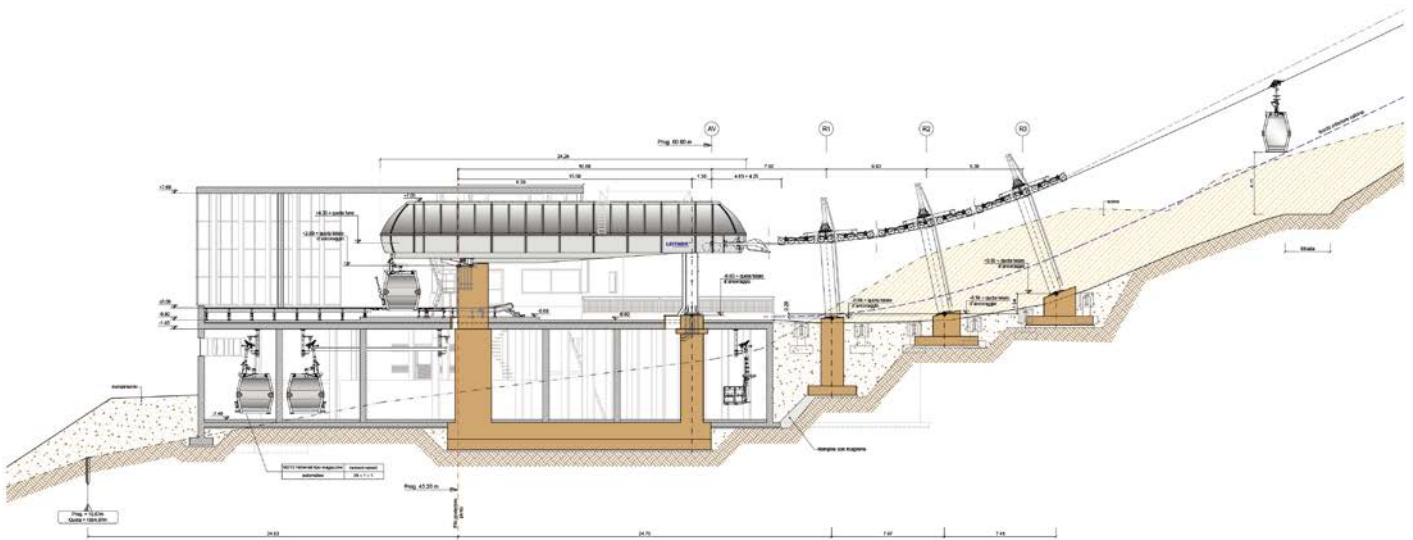
GD10 HÖLLENTAL

Schöneben - Belpiano / IT

Inclined length	1360 m	Power	882 kW
Vertical rise	414 m	Total number of vehicles	38
Transport capacity	2400 p/h	Total number of towers	10

The creation of a unified ski area is of enormous importance for the Reschenpass tourist region. As a recreational area, the destination focuses equally on families, sport and nature enthusiasts. In addition to the “GD10 St. Valentin – Schöneben”, the “GD10 Höllental” makes it possible to travel onwards from

the upper station in Schöneben. This gives access to the Höllental piste and from there to the new connecting piste to the middle station of the “GD10 St. Valentin-Schöneben”. Connecting the two ski areas means that the strengths of Schöneben in winter and of Haideralm in summer can be optimally shared.











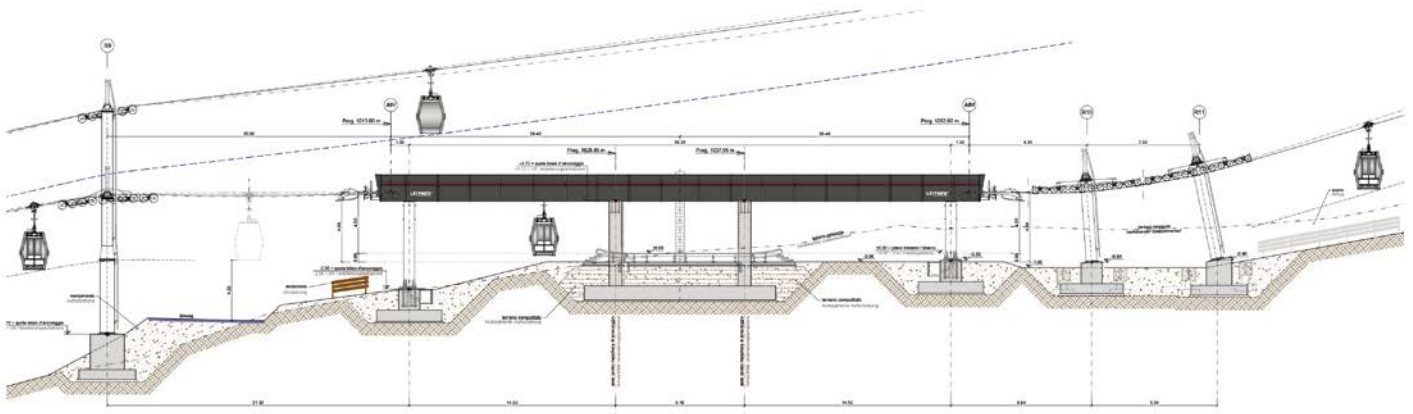
GD10 SKI EXPRESS

Gitschberg - Rio di Pusteria / IT

Inclined length	1853 m	Power	882 kW
Vertical rise	510 m	Total number of vehicles	65
Transport capacity	3000 p/h	Total number of towers	16

The Gitschberg-Jochtal ski resort benefits from a new 10-passenger gondola lift from LEITNER ropeways. This new installation provides access to more slopes that are perfect for families and leisure skiers, as well as experienced winter sports enthusiasts. The new "Ski Express" bottom station was built 200m

below the old one and reaches now after two kilometers the Gitschhütte mountain lodge. Modern cabins feature sliding doors with fixed side panels along the lateral front, thereby offering passengers plenty of space and a spectacular view through the panoramic windows.







GD10 SKI EXPRESS Gitschberg - Rio di Pusteria / IT





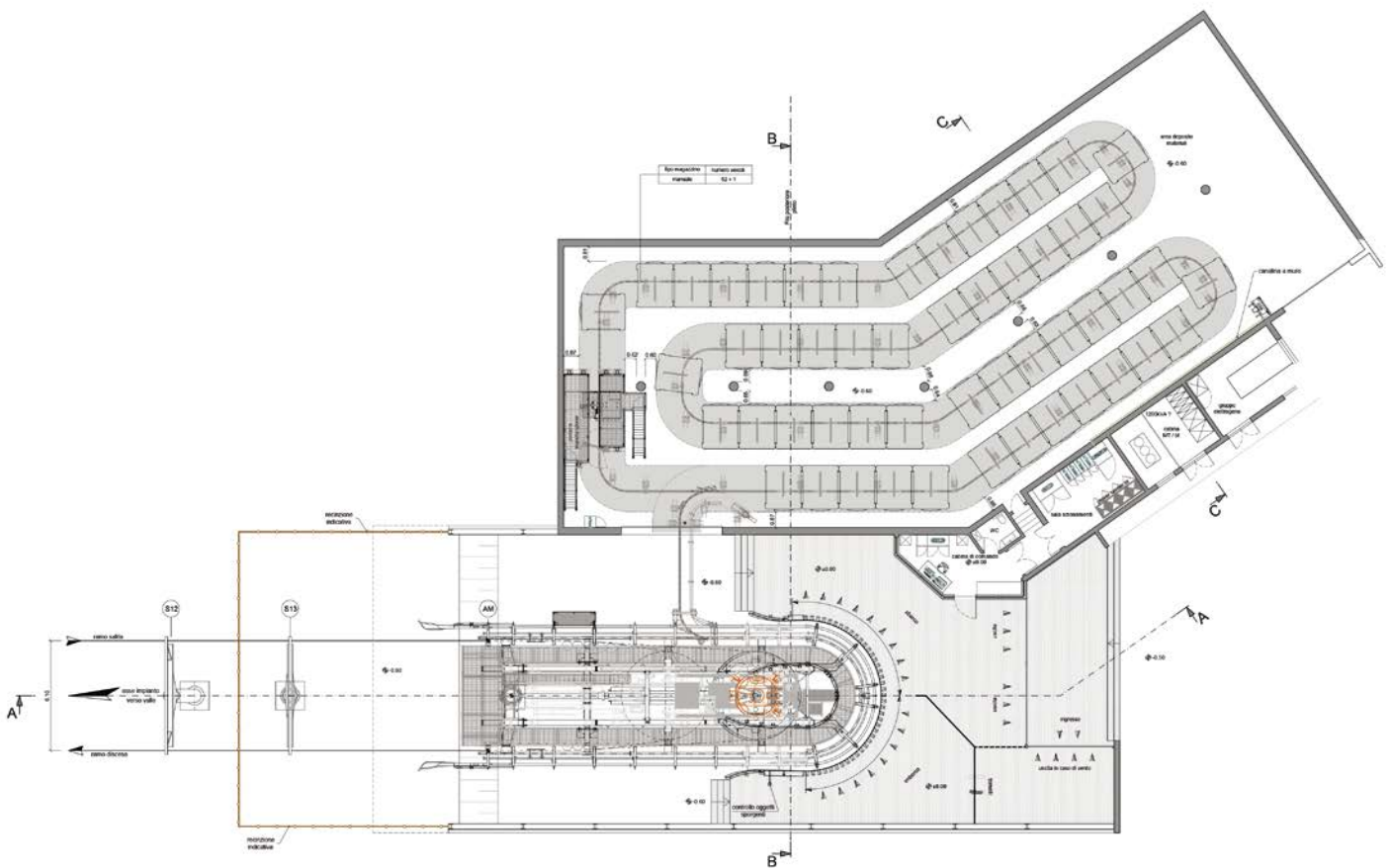
GD10 COLBRICON EXPRESS

San Martino di Castrozza / IT

Inclined length	1977 m	Power	794 kW
Vertical rise	359 m	Total number of vehicles	52
Transport capacity	2400 p/h	Total number of towers	13

San Martino di Castrozza – Passo Rolle is a ski resort in Trentino and part of the “Dolomiti Superski” area. Here, winter sports enthusiasts are transported even more quickly thanks

to a new 10-passenger gondola lift. Skiers can reach Valbonetta from San Martino di Castrozza in only six minutes.











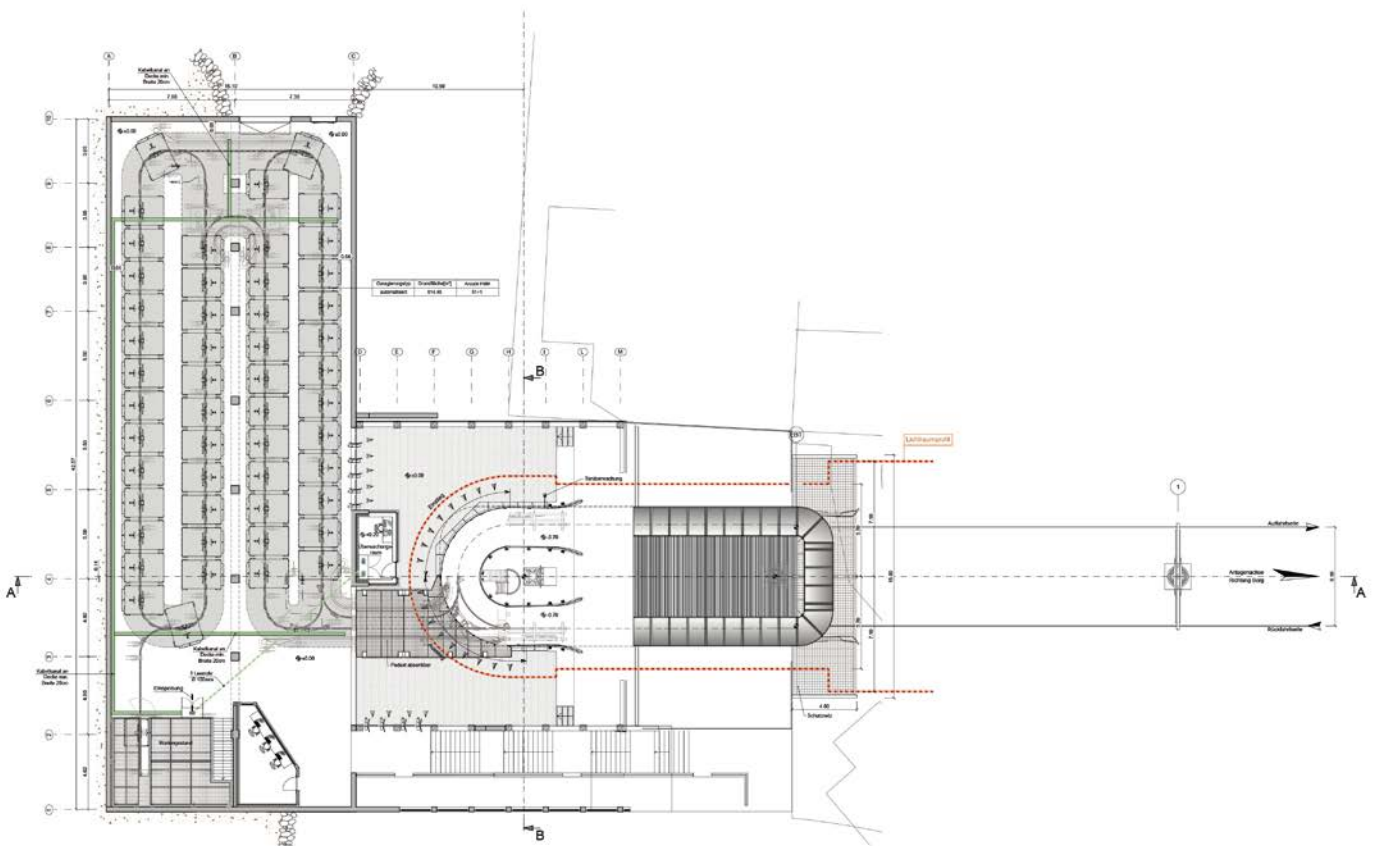
GD10 SCHNEEHÜENER-STOCK-EXPRESS

Andermatt / CH

Inclined length	1710 m	Power	740 kW
Vertical rise	548 m	Total number of vehicles	51
Transport capacity	2400 p/h	Total number of towers	14

In Switzerland, the “Schneehüenerstock-Express” 10-passenger gondola lift in the SkiArena Andermatt-Sedrun was established as an important link between Andermatt and Sedrun. Previously, you could only travel by train with the “Matterhorn Gotthard Bahn”

from Sedrun back to Andermatt. Now, this is possible by gondola lift or by skiing on the new slopes. The new ropeway is thus the convenient and fast “return option” from the Oberalp Pass to the Schneehüenerstock.











GD10 JENNERBAHN I + II

Berchtesgaden / DE

Jennerbahn I

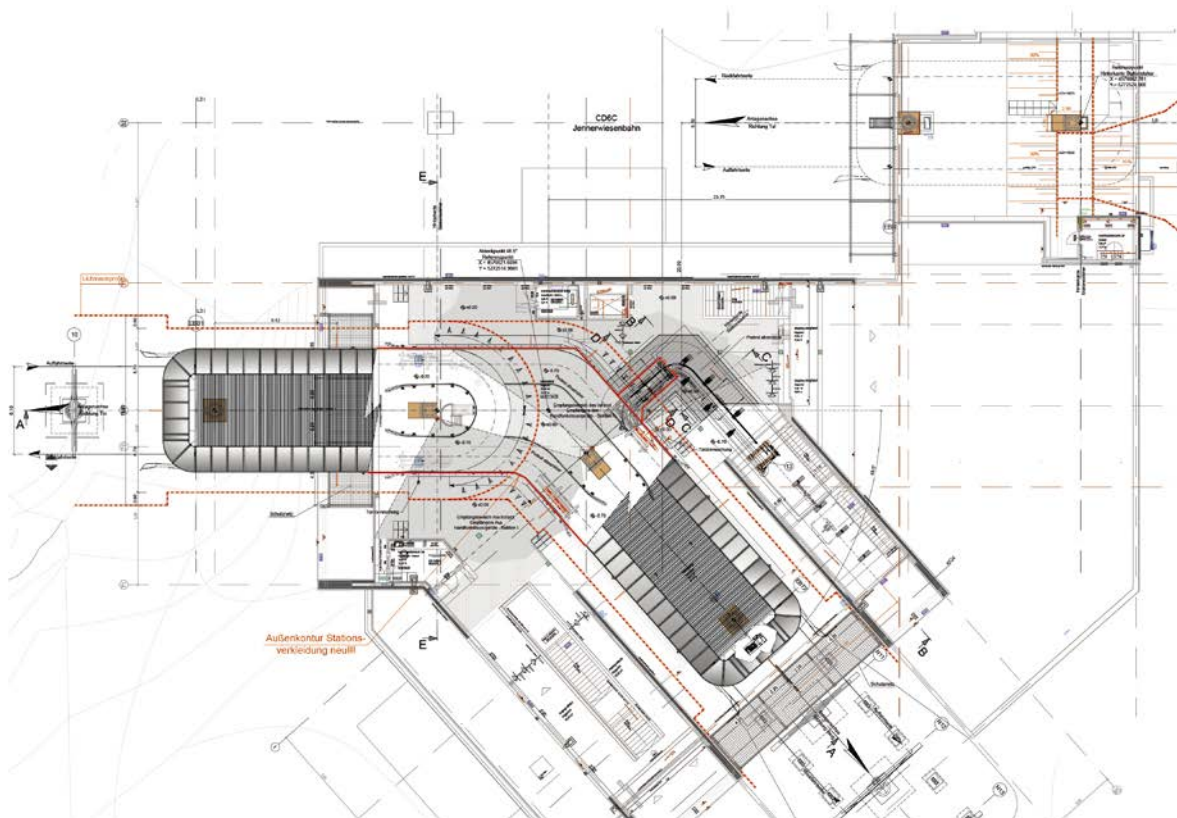
Inclined length	1822 m
Vertical rise	556 m
Transport capacity	1600 p/h
Power	529 kW
Total number of vehicles	33
Total number of towers	10

Jennerbahn II

Inclined length	1362 m
Vertical rise	600 m
Transport capacity	1600 p/h
Power	529 kW
Total number of vehicles	27
Total number of towers	9

The “Jennerbahn I + II” 10-passenger gondola lifts and the “Jennerwiesen” 6-seater chairlift have been built in the well-known Mount Jenner area at Königssee lake. The new Jennerbahn ropeways are bringing modern design and even more comfort to Königssee

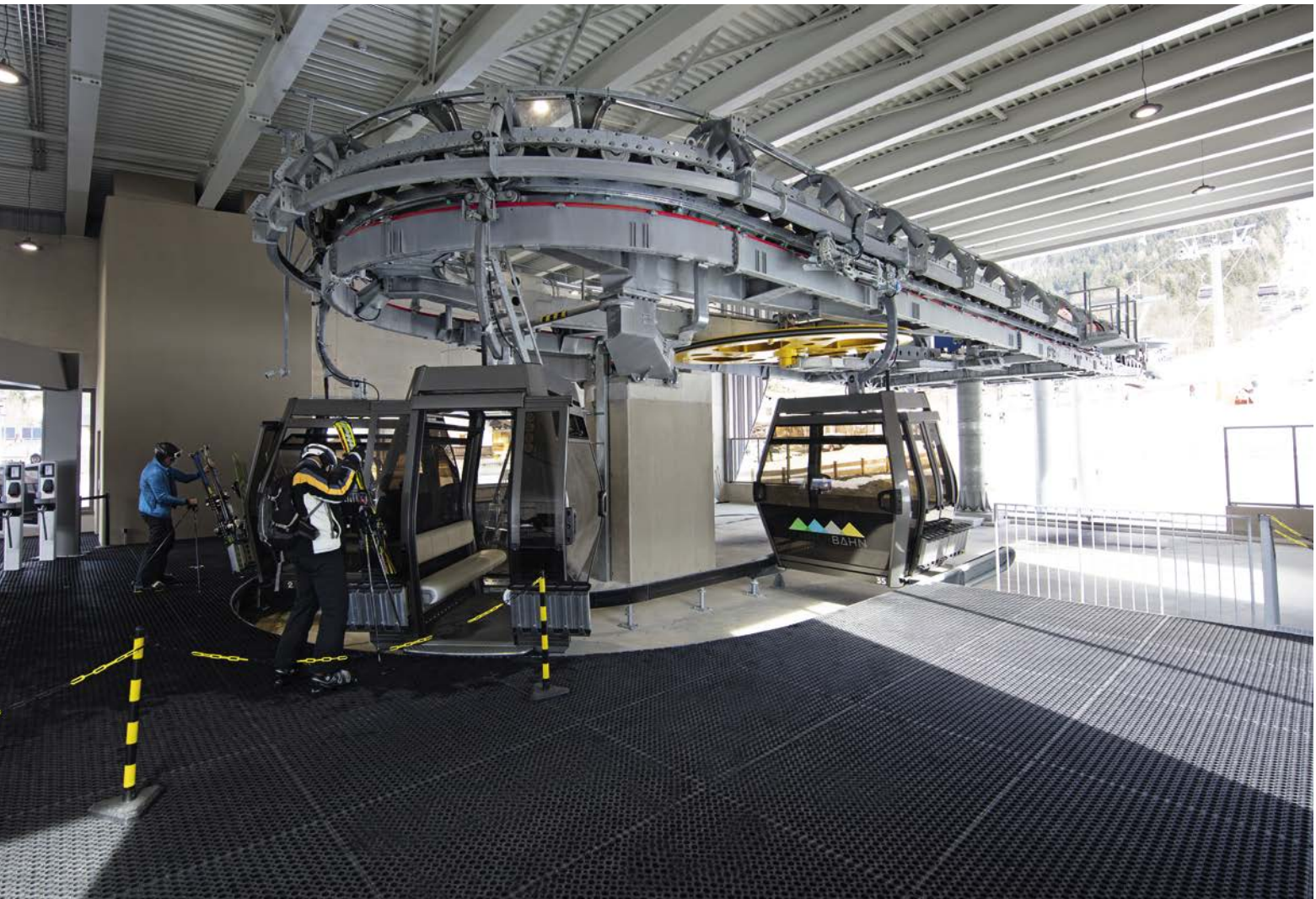
lake. They are equipped with Diamond EVO cabins from the Italian Pininfarina design studio with soft cream colored leather seats. The glass that projects further downwards also provides a panoramic view of the surrounding lake and mountain landscape.





LEITNER
ropeways

BAHN







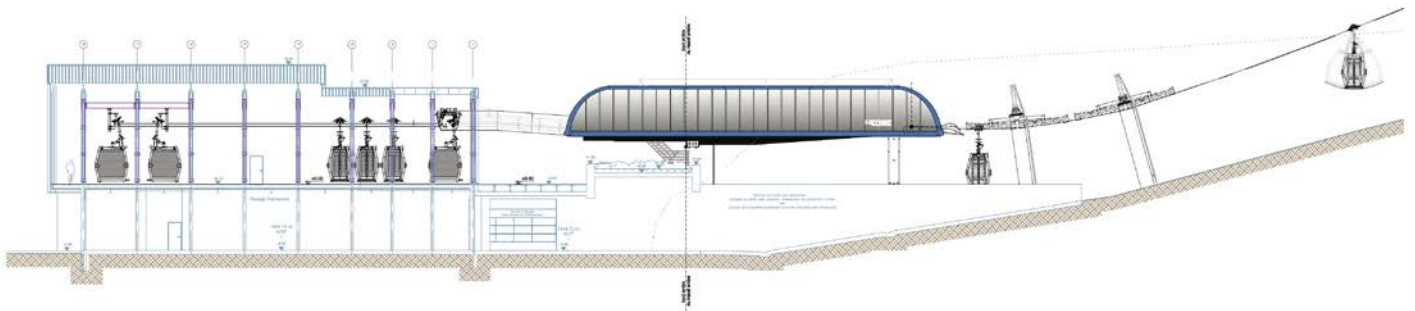
GD10 VIEUX MOULIN

Val Cenis / FR

Inclined length	2151 m	Power	882 kW
Vertical rise	643 m	Total number of vehicles	55
Transport capacity	2200 p/h	Total number of towers	15

The modern “Vieux Moulin” 10-passenger gondola lift in the French ski resort of Val Cenis Vanoise replaces a 30-year-old 6-passenger gondola lift and also serves as the connecting ropeway to the ski resort. This ropeway is the first system in France with an elegant Pininfarina station and it is also equipped with

LEITNER DirectDrive and Diamond EVO cabins with heated seats. Winter sports enthusiasts can use the new gondola lift to get to the ski resort quickly and comfortably. The Val Cenis Vanoise ski resort is located in the French Alps, close to the Italian border.





Val Cenis







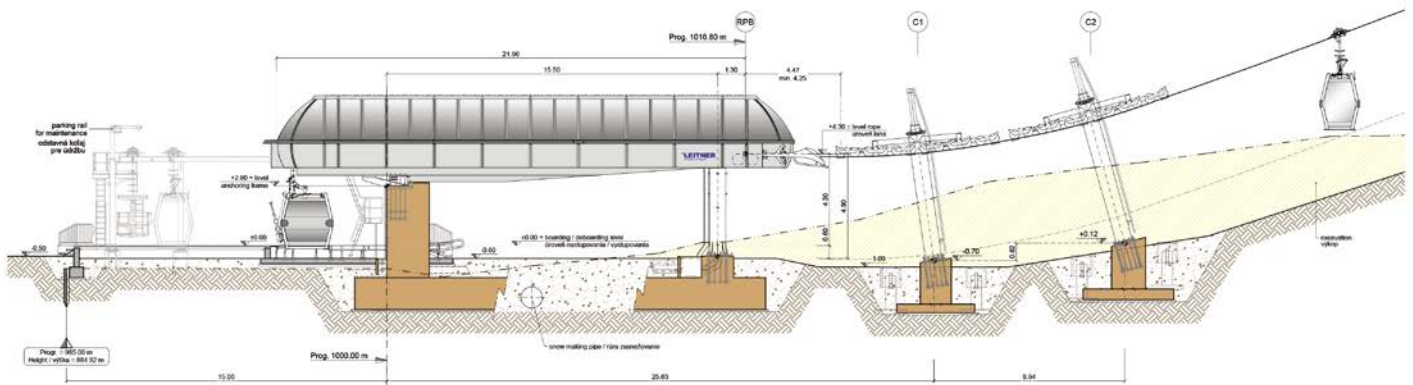
GD10 BACHLEDKA

Bachledka / SK

Inclined length	1519 m	Power	529 kW
Vertical rise	264 m	Total number of vehicles	45
Transport capacity	2601 p/h	Total number of towers	9

The ski resort Bachledka Ski & Sun is located in Slovakia near the Polish border and is a year-round tourist destination. Replacing a 30-year-old lift, the new gondola lift significant-

ly increases capacity and is the most important means of transport in the area. The GD10 "Bachledka" is also used in summer for hikers, families, or cyclists.







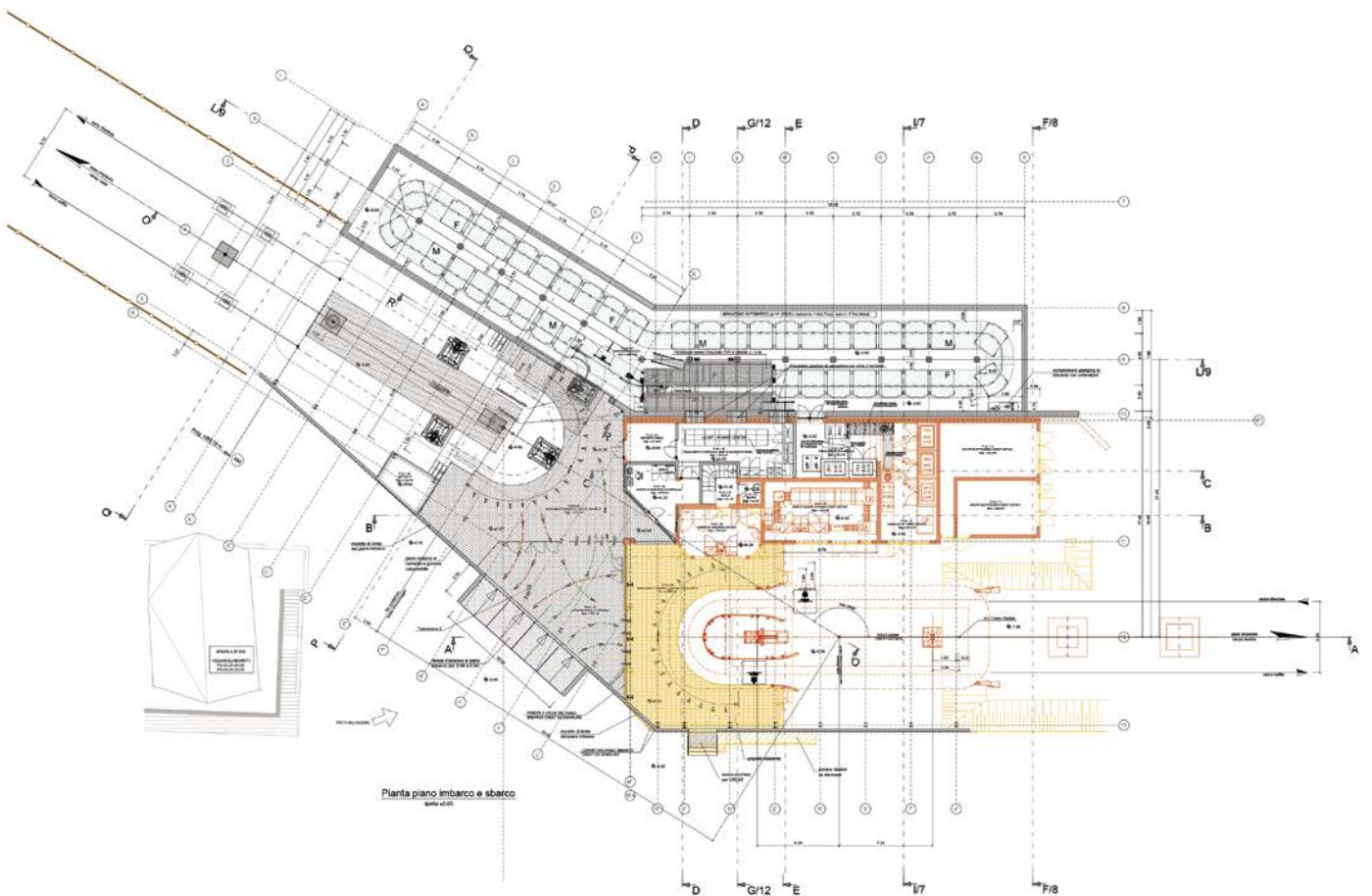
GD8 CHAMPOLUC - CREST

Ayas / IT

Inclined length	1121 m	Power	700 kW
Vertical rise	397 m	Total number of vehicles	41
Transport capacity	2400 p/h	Total number of towers	10

The 8-passenger gondola lift in Champuloc, northern Italy, not only serves the ski resort but is also used as public transport. With extended operating hours from 7.30 a.m. to 11 p.m., it

provides an environmentally friendly connection to the higher villages in the Ayas Valley while also acting as a feeder for the “Monterosa Ski” ski resort.





Jeep

THERE'S ONLY ONE

MONTEROSA
SKI

Jeep

Valle d'Aosta
Valle d'Aosta







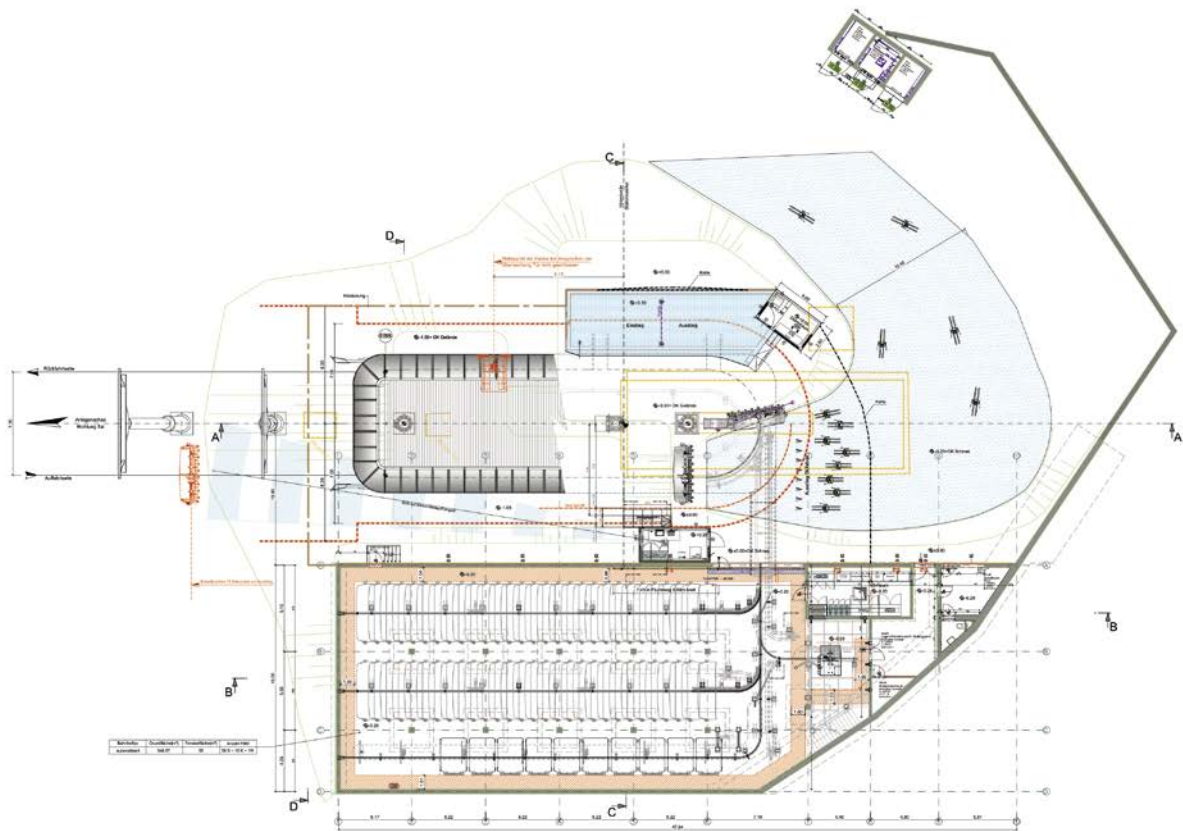
TMX8-10 PLATTENKARBAHN

Obertauern / AT

Inclined length	1065 m	Power	690 kW
Vertical rise	383 m	Total number of vehicles	58 / 10
Transport capacity	3630 p/h	Total number of towers	11

On behalf of Bergbahnen Obertauern, LEITNER ropeways built the new “Plattenkarbahn” ropeway, a Telemix system fitted with Diamond EVO 10-passenger cabins and Premium 8-seater chairs. Particular attention has also been paid to details that contribute to the highly attractive installations. The chairs

and seat benches are upholstered with loden fabrics and thus not only exude a feeling of cosiness but exclusivity, too. In terms of performance, the new ropeway also provides even more momentum on the slopes in Obertauern. Able to transport up to 3,630 people per hour, this facility is a real powerhouse.













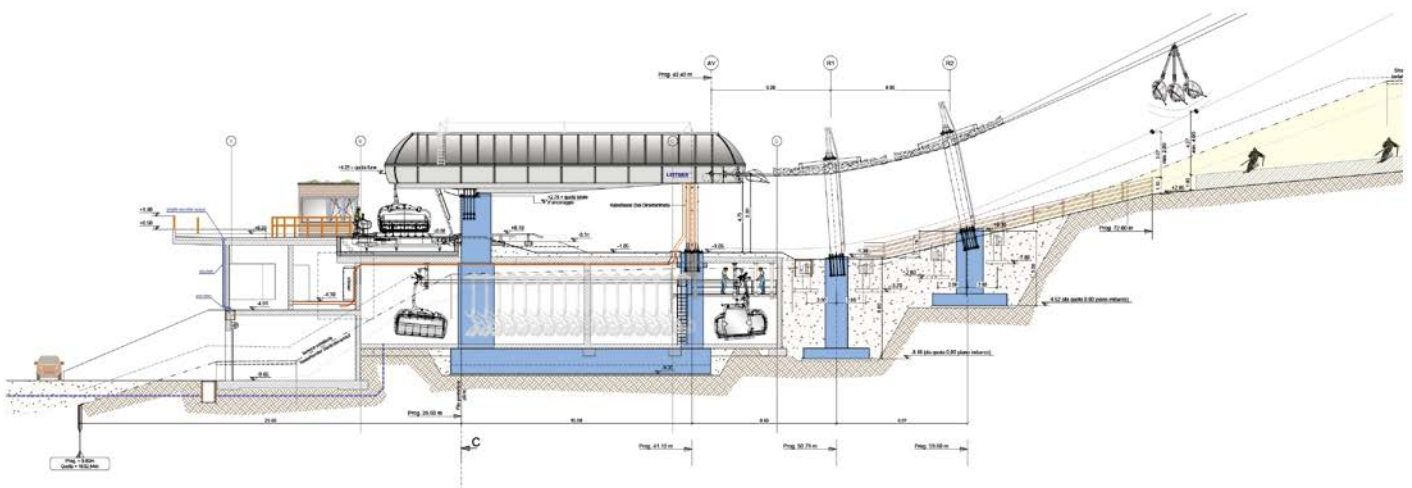
TMX6-8 PANORAMABAHN

Rosskopf - Monte Cavallo / IT

Inclined length	822 m	Power	450 kW
Vertical rise	275 m	Total number of vehicles	46
Transport capacity	2400 p/h	Total number of towers	9

The “Panoramalift” Telemix system at Monte Cavallo near Vipiteno replaces a 30-year-old chairlift. The combination of 6-seater chairs and 8-passenger cabins not only increases the capacity of the new facility, but its functionality as well. Seasoned skiers can wear their skis to travel on comfort chairs thus allowing them to return to the slopes as quickly as possible

and children as well as pedestrians are transported comfortably and safely in modern cabins. Telemix systems are ideal in summer too as the facility can also be operated without chairs. This aspect is particularly important for the “Panoramabahn” at Monte Cavallo since hikers and paragliders are transported as quickly and comfortably as possible in summer.







TMX6-8 PANORAMABAHN Rosskopf - Monte Cavallo / IT





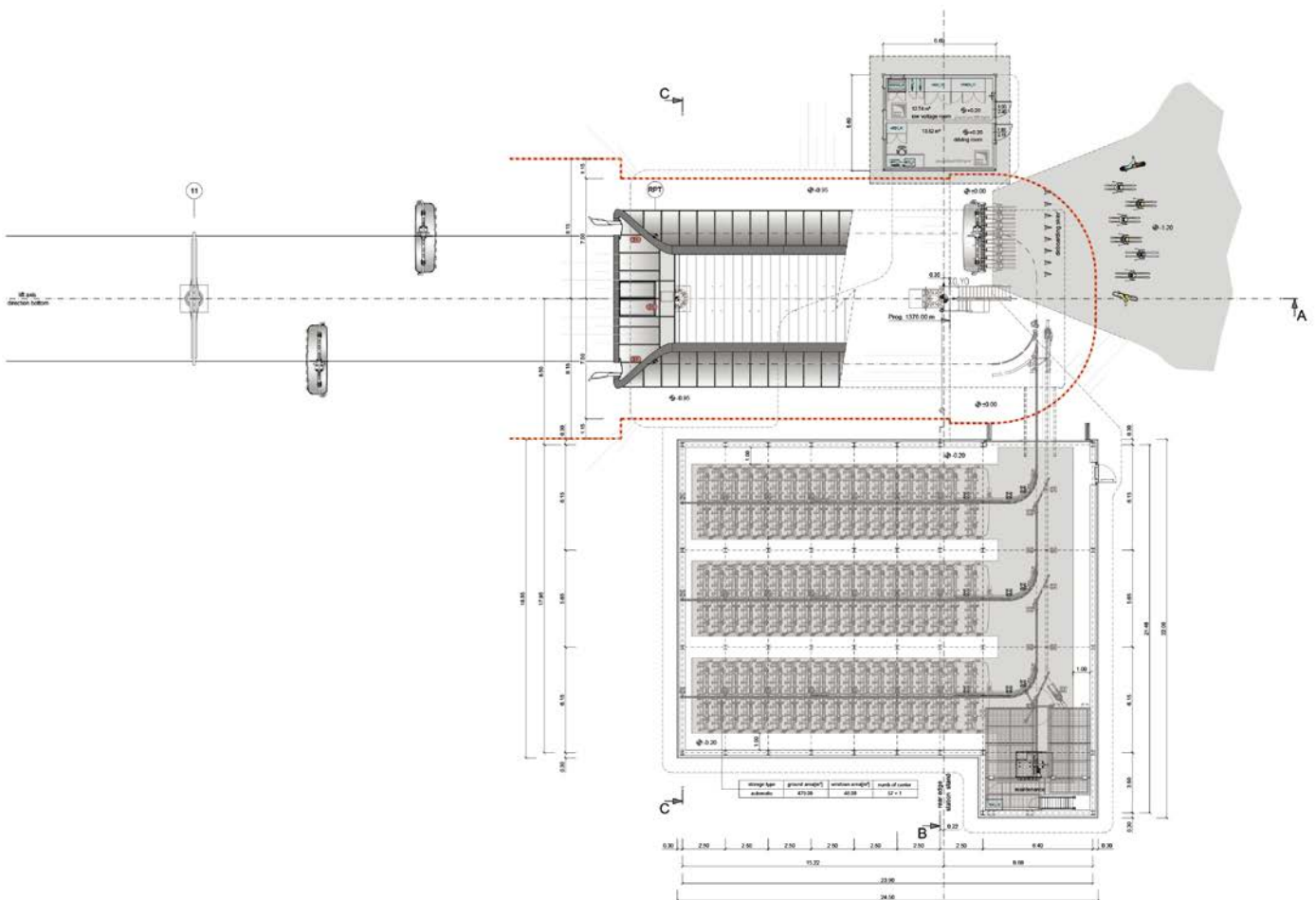
CD8C WEST EXPRESS

Sälen / SE

Inclined length	1366 m	Power	489 kW
Vertical rise	228 m	Total number of vehicles	57
Transport capacity	3200 p/h	Total number of towers	11

LEITNER ropeways has constructed a new 8-seater chairlift in Hundfjället in place of a surface lift, which carries guests directly to the summit of Långbackarna and thus also to the centerpiece in the west of the family ski resort. The entrance to many ski slopes of different levels of difficulty is located here. With the new chairlift, this area of the ski resort

can now be reached even more quickly and in a more modern and attractive way. Fitted with weather protection bubbles, seat heating, a LEITNER DirectDrive and Premium chairs, this system has also been implemented with stations in Pininfarina design for the first time in Scandinavia.













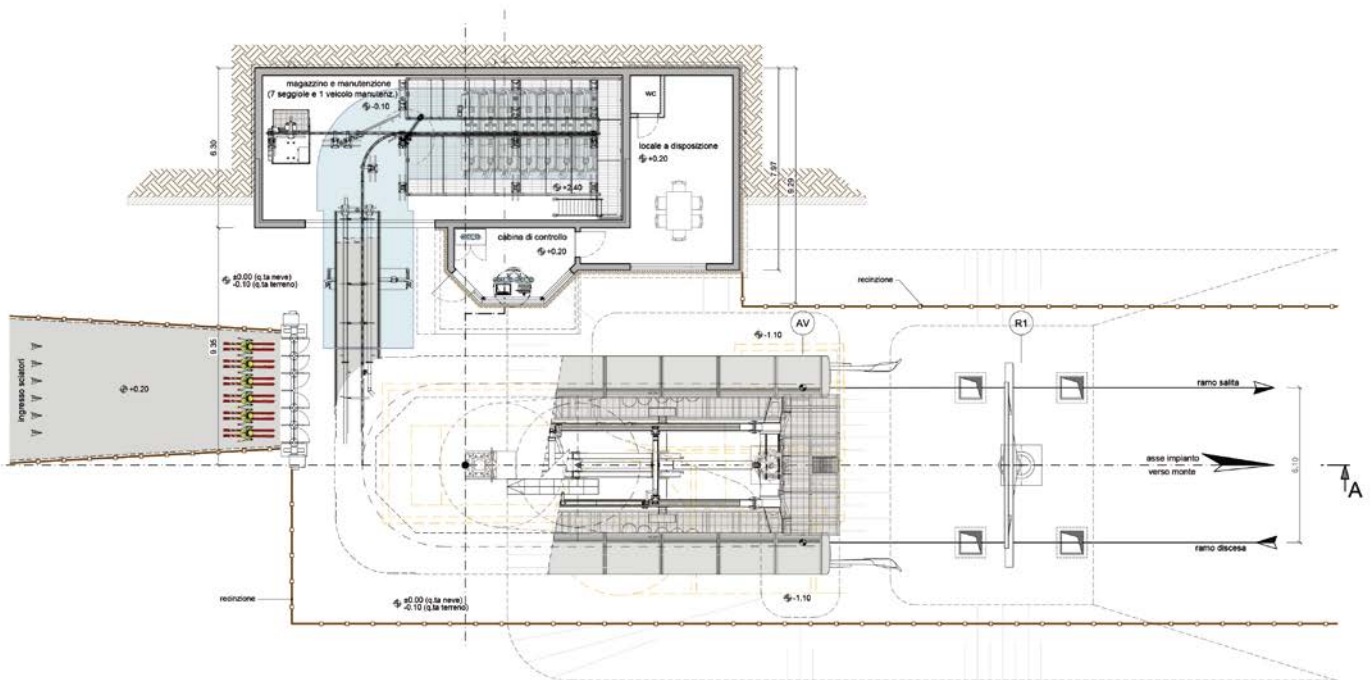




CD6 ROBY

Abtei - Badia / IT

Inclined length	542 m	Power	294 kW
Vertical rise	117 m	Total number of vehicles	34
Transport capacity	2800 p/h	Total number of towers	6







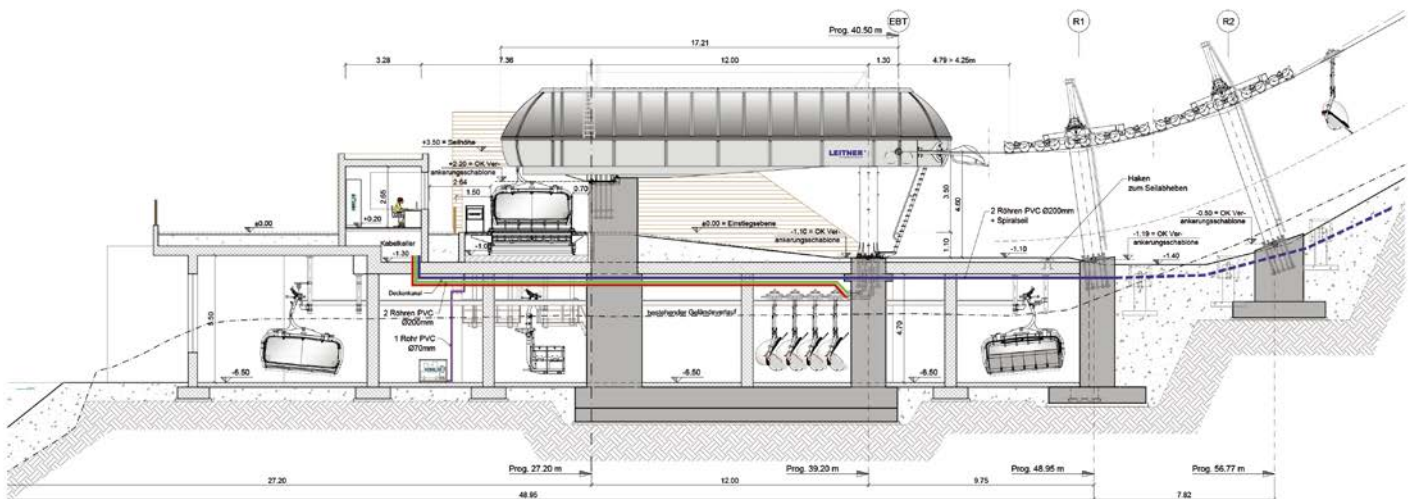




CD6 MITTELSTATION

Sexten - Sesto / IT

Inclined length	1299 m	Power	662 kW
Vertical rise	353 m	Total number of vehicles	62
Transport capacity	2400 p/h	Total number of towers	13







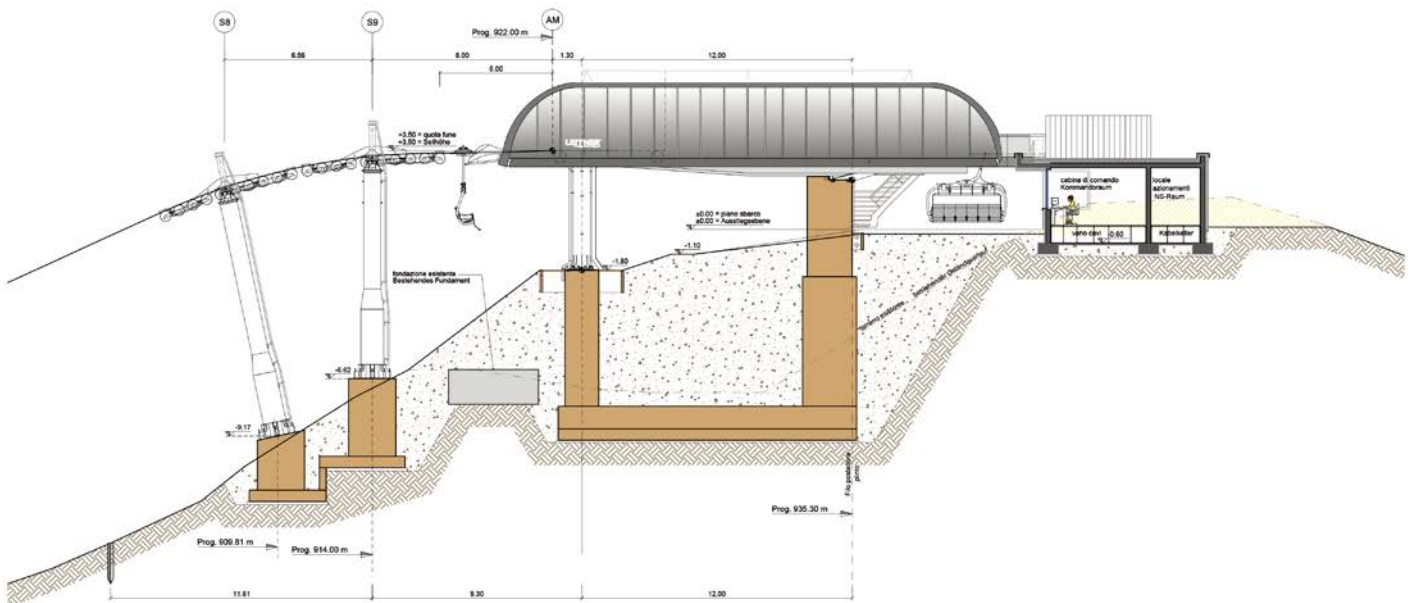




CD6 MEZDÌ

Seiser Alm - Alpe di Siusi / IT

Inclined length	921 m	Power	441 kW
Vertical rise	250 m	Total number of vehicles	52
Transport capacity	2700 p/h	Total number of towers	9







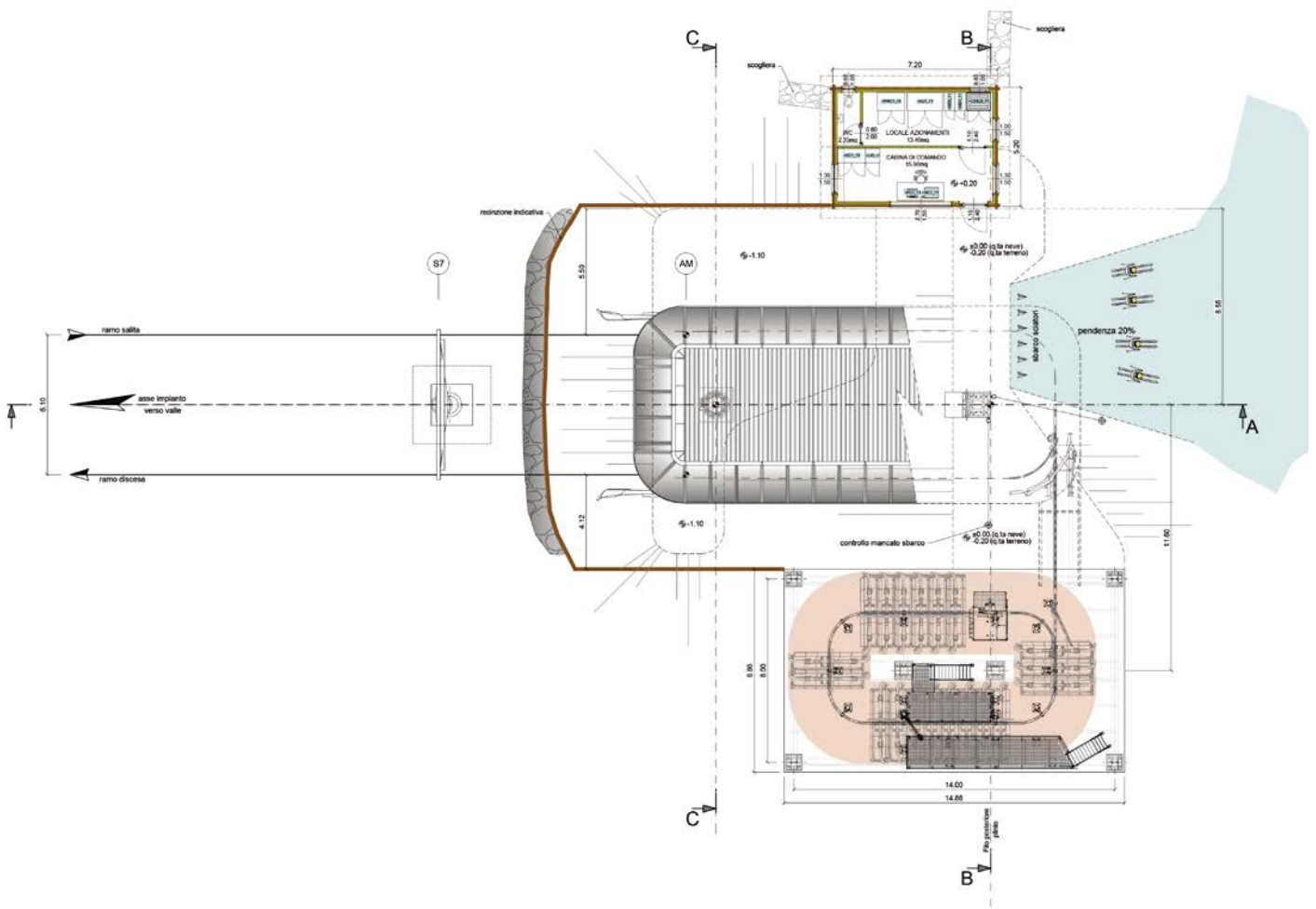




CD6 FOSSADEI

Pinzolo / IT

Inclined length	913 m	Power	380 kW
Vertical rise	273 m	Total number of vehicles	45
Transport capacity	2400 p/h	Total number of towers	7











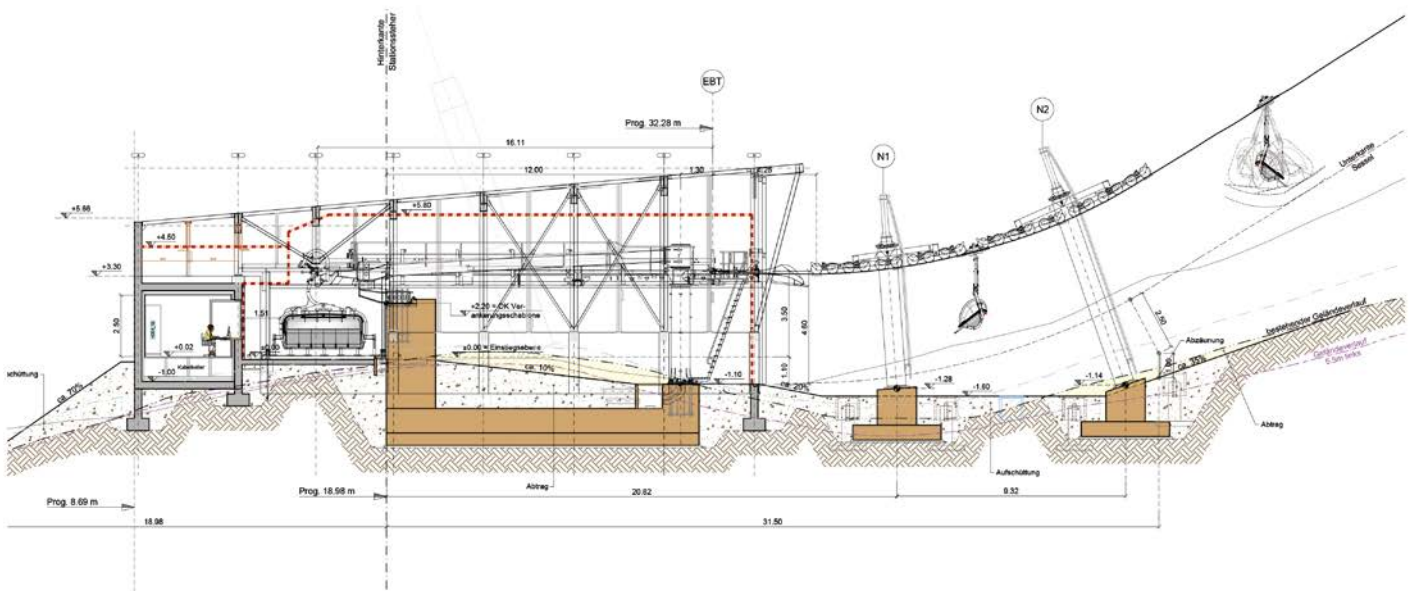
CD6C JENNERWIESEN

Berchtesgaden / DE

Inclined length	602 m	Power	294 kW
Vertical rise	161 m	Total number of vehicles	22
Transport capacity	1600 p/h	Total number of towers	7

With the “Jennerwiesen” 6-seater chairlift, an additional ropeway has been put into operation in the ski resort. It runs parallel to the new “Jennerbahn I” gondola lift, with deboarding in

the building at the top station of the gondola lift. The chairlift features LEITNER DirectDrive, individual footrests, and an automatic lockable safety bar.







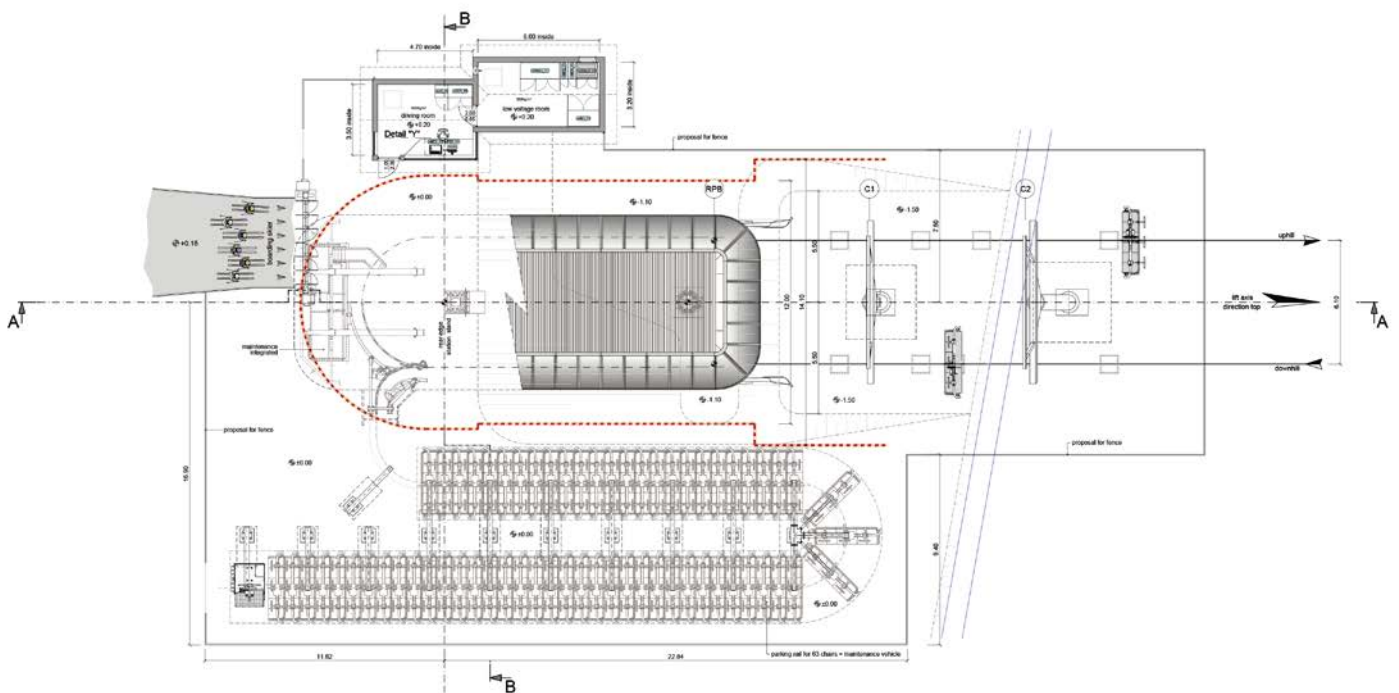




CD6 GÖTES EXPRESS

Borlänge / SE

Inclined length	955 m	Power	368 kW
Vertical rise	238 m	Total number of vehicles	63
Transport capacity	3200 p/h	Total number of towers	12







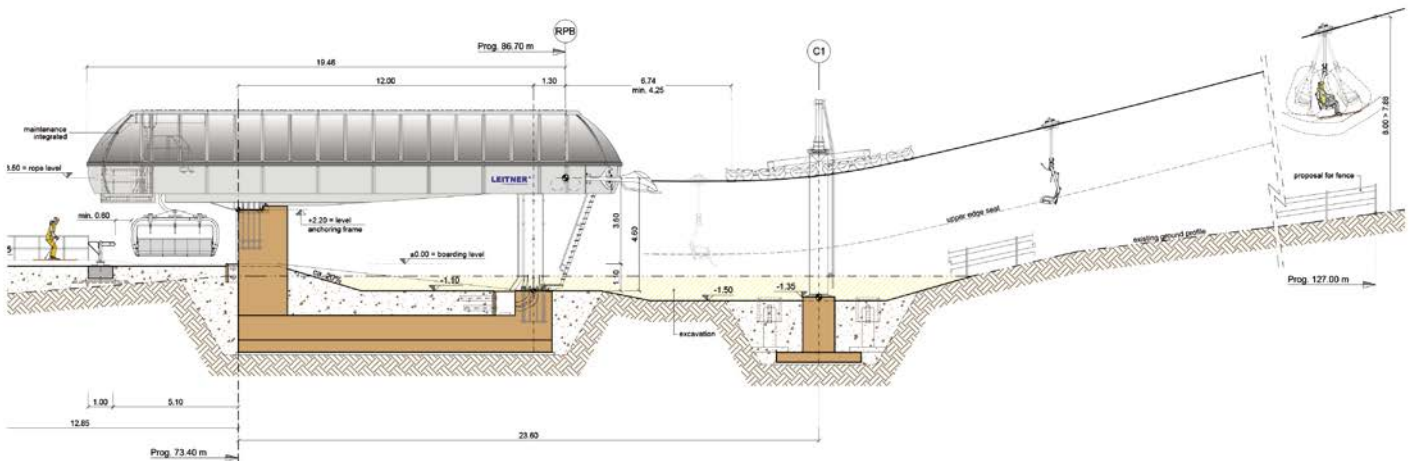




CD6 STOLLIFT B

Järvsö / SE

Inclined length	668 m	Power	355 kW
Vertical rise	197 m	Total number of vehicles	37
Transport capacity	2600 p/h	Total number of towers	8



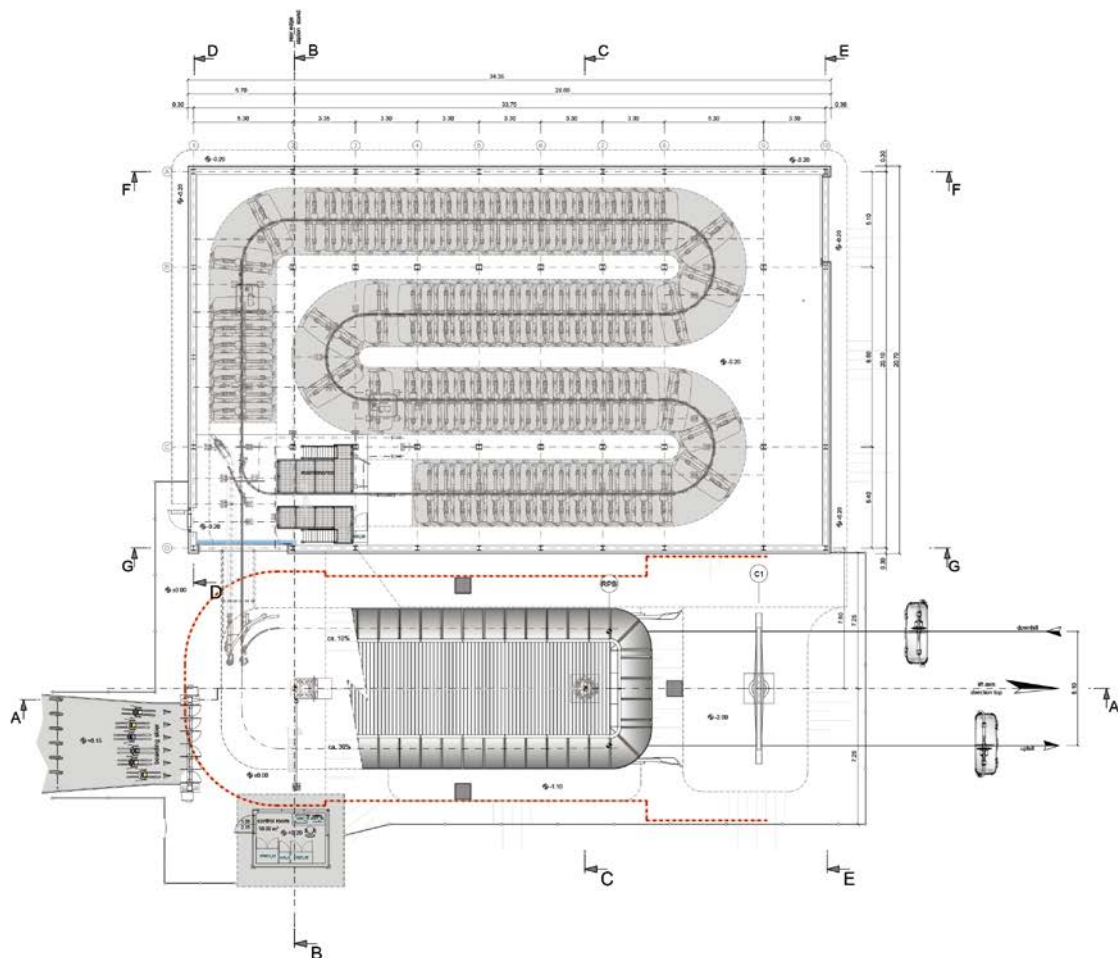




CD6C HAFJELLOPPEN

Øyer / NO

Inclined length	2022 m	Power	500 kW
Vertical rise	278 m	Total number of vehicles	86
Transport capacity	2600 p/h	Total number of towers	16



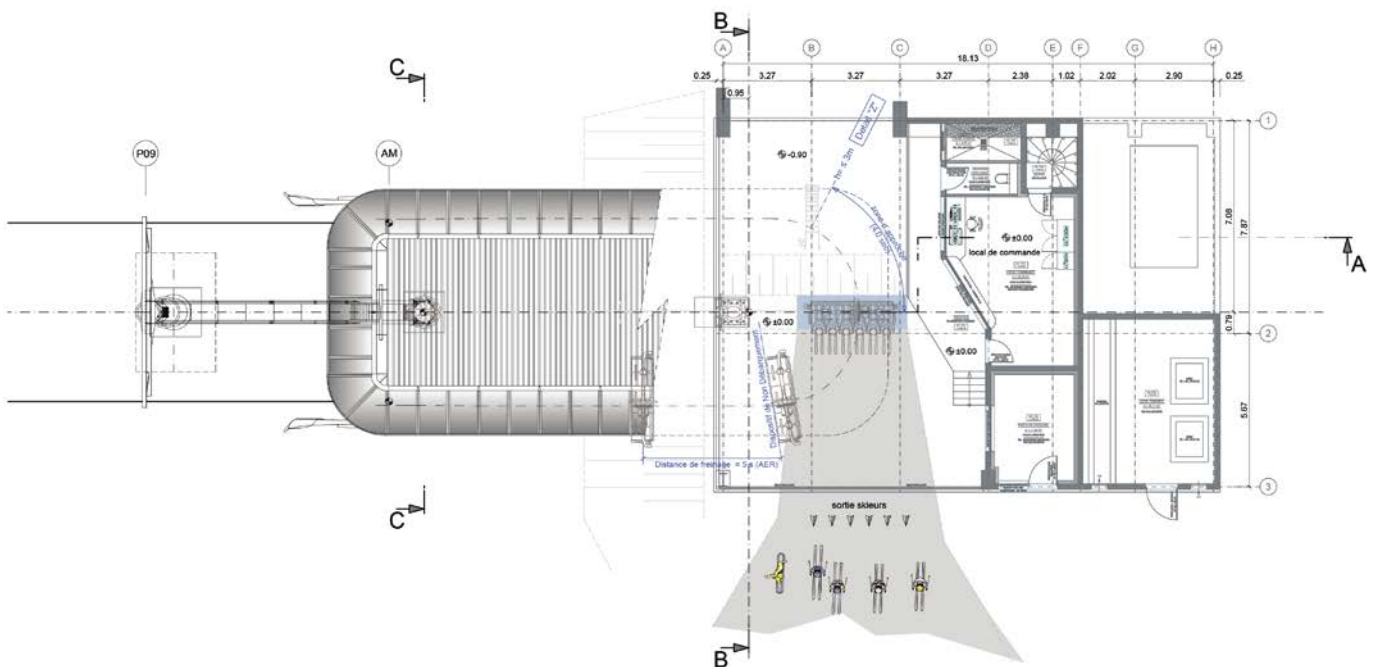




CD6 TABÉ

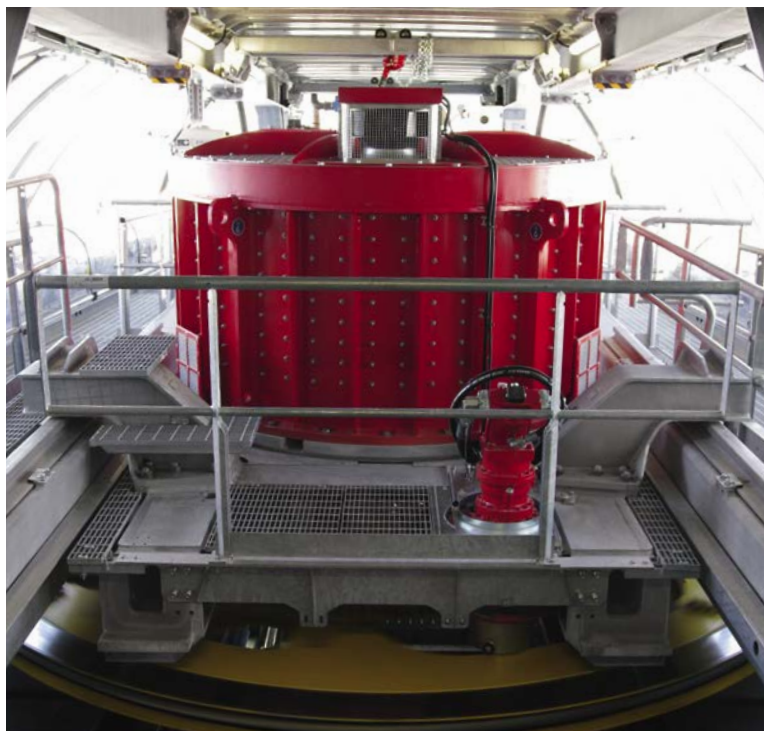
Chamonix - Mont Blanc / FR

Inclined length	959 m	Power	794 kW
Vertical rise	302 m	Total number of vehicles	47
Transport capacity	2800 p/h	Total number of towers	9







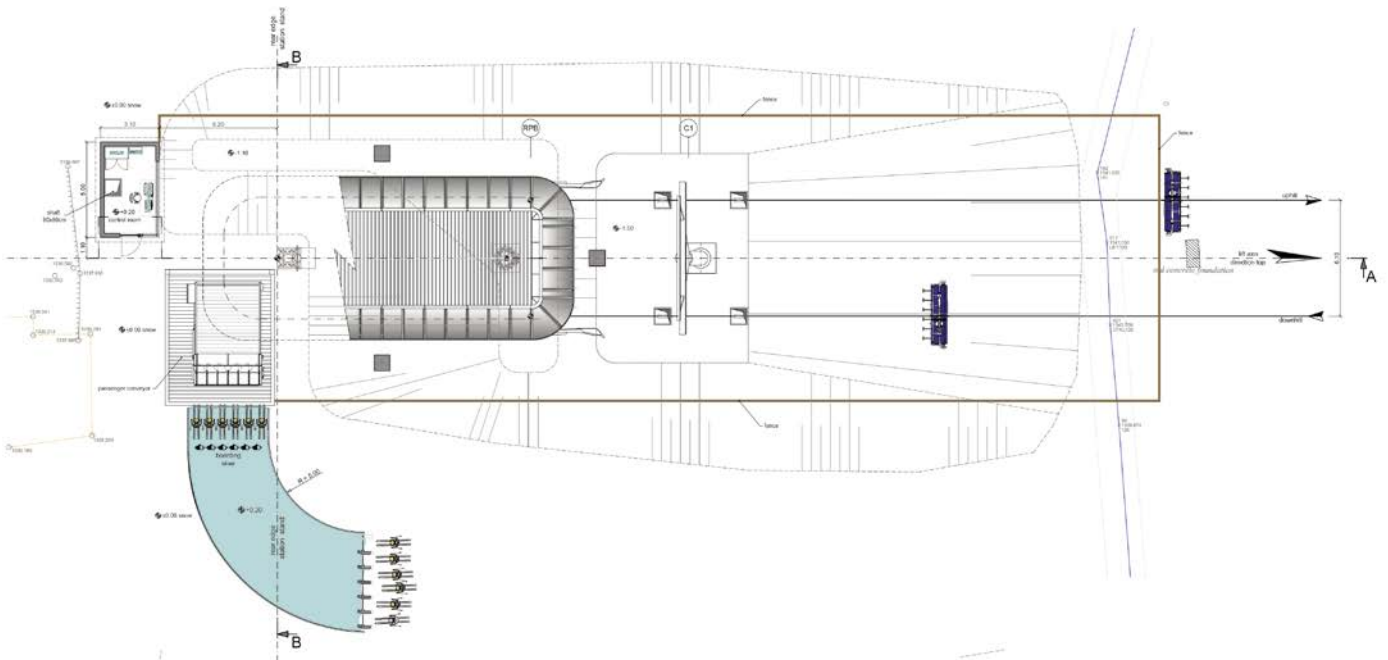




CD6 MARTINOVI BARAKI

Borovets / BG

Inclined length	1181 m	Power	529 kW
Vertical rise	313 m	Total number of vehicles	60
Transport capacity	3000 p/h	Total number of towers	10











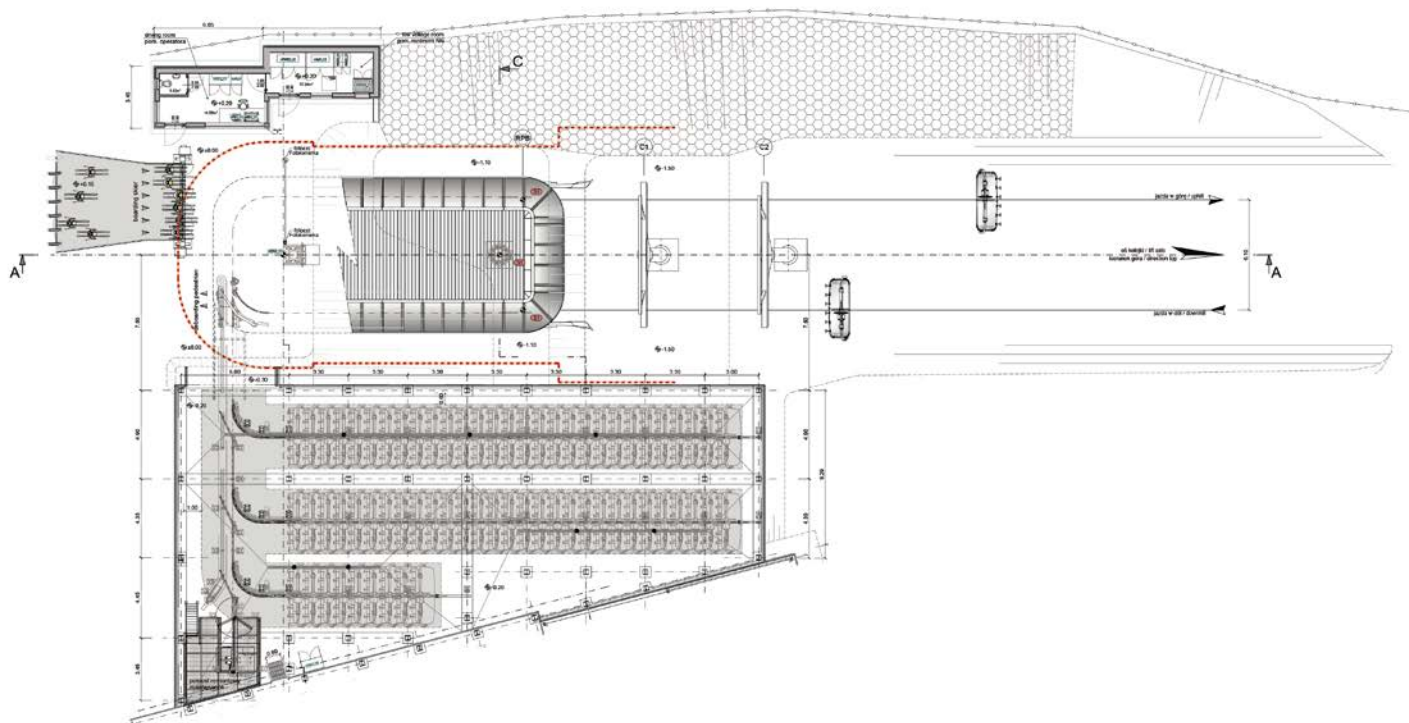
CD6C HALA - MALE SKRZYCZNE

Szczyrk / PL

Inclined length	1691 m	Power	441 kW
Vertical rise	205 m	Total number of vehicles	67
Transport capacity	2000 p/h	Total number of towers	13

In the Szczyrk Mountain Resort in the Carpathians, the largest and most popular ski resort in Poland, a new 6-seater chairlift has been built as part of an extensive modernization program, which is now the longest

ropeway in the Szczyrk Mountain Resort. LEITNER ropeways established four new systems in this area in 2017 after building a 4-seater chairlift here in 2013.



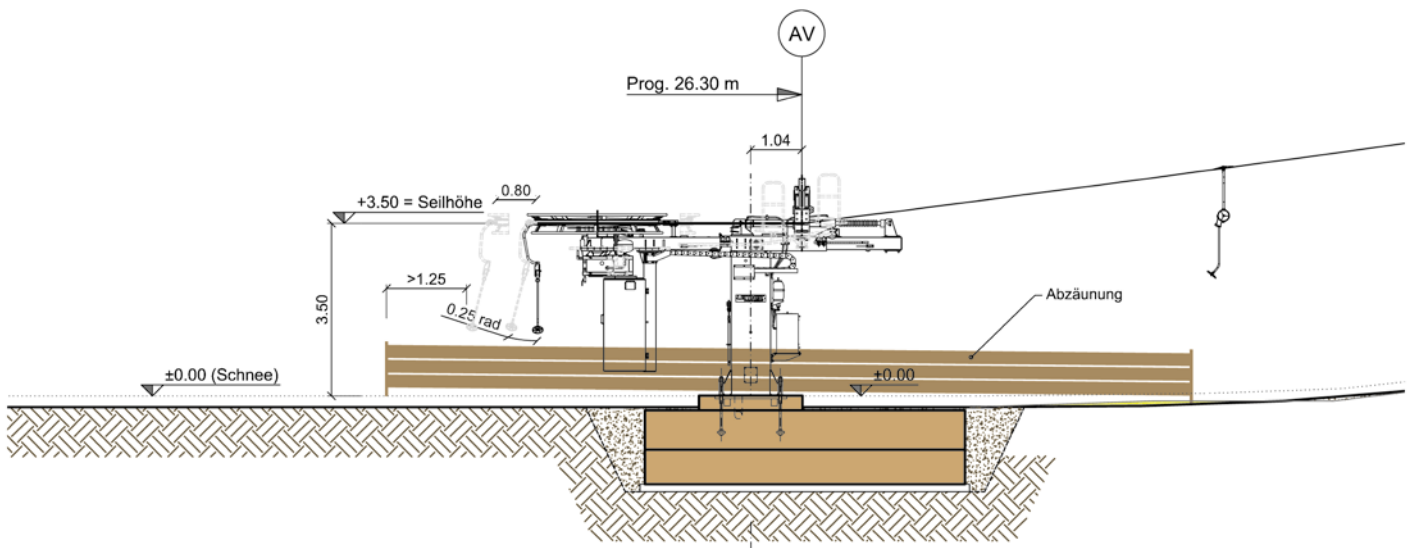




SL1 RIENZ

Toblach - Dobbiaco / IT

Inclined length	718 m	Power	75 kW
Vertical rise	123 m	Total number of vehicles	114
Transport capacity	900 p/h	Total number of towers	7





3 ZINNEN
DOLOMITES

DOLOMITI
SUPERSKI

LEITNER

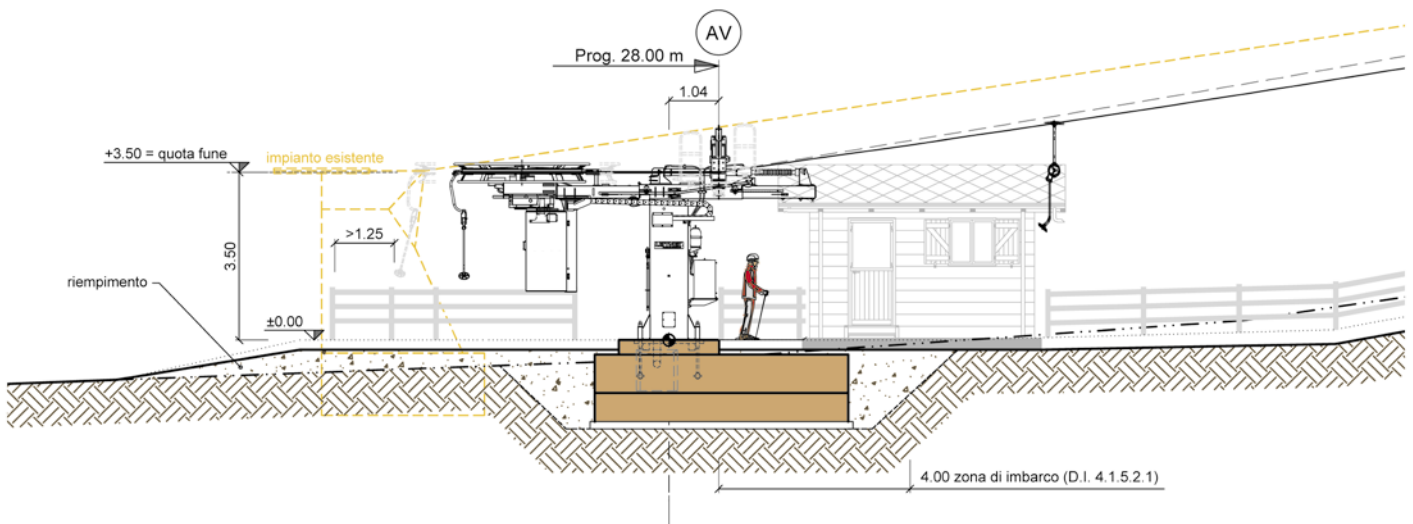
Trekker
Trekker
Trekker



SL1 CAMPO SCUOLA - LE BUSE

Falcade / IT

Inclined length	353 m	Power	45 kW
Vertical rise	76 m	Total number of vehicles	65
Transport capacity	900 p/h	Total number of towers	5







SL1 MARMOTTONS SL1 PETITS MARMOTTONS

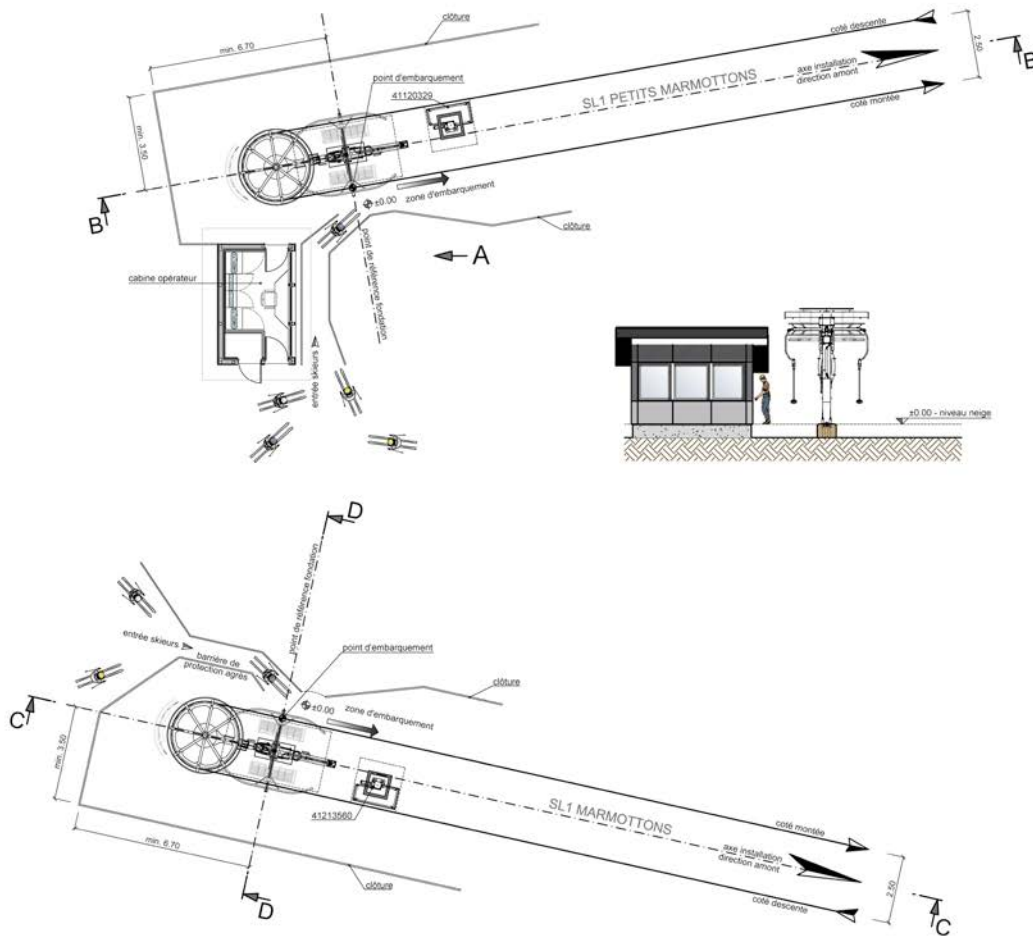
Chamonix - Mont Blanc / FR

Marmottons

Inclined length	185 m
Vertical rise	31 m
Transport capacity	789 p/h
Power	22 kW
Total number of vehicles	40
Total number of towers	2

Petits Marmottons

Inclined length	108 m
Vertical rise	15 m
Transport capacity	770 p/h
Power	22 kW
Total number of vehicles	22
Total number of towers	2



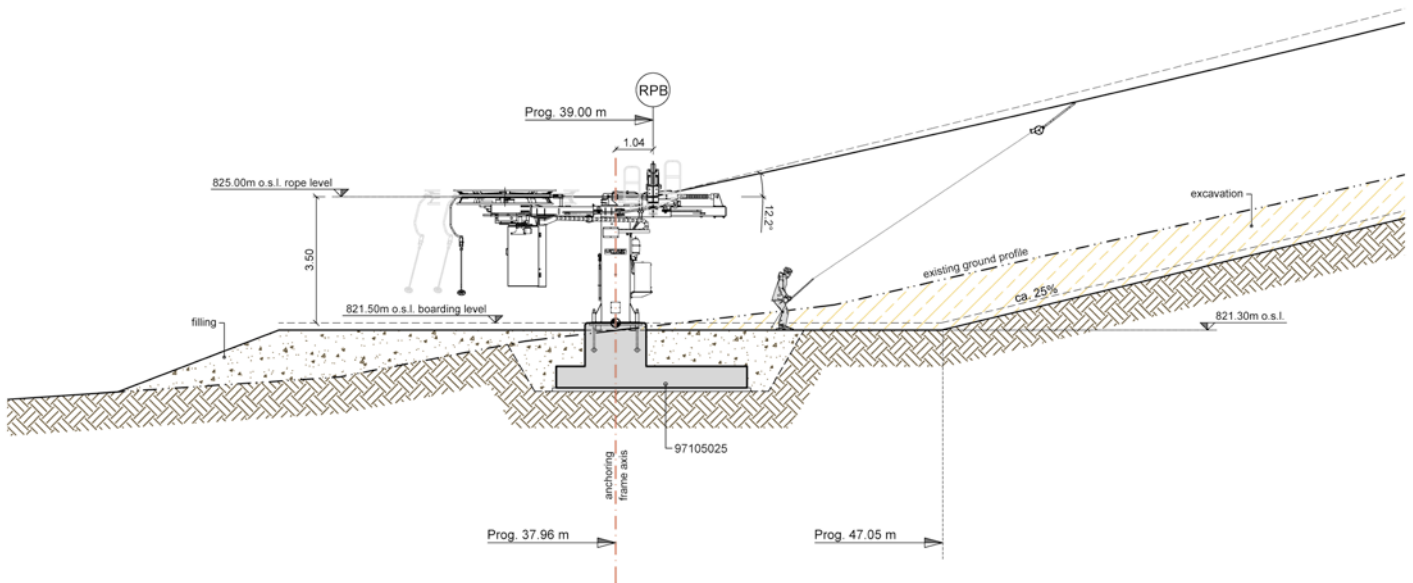


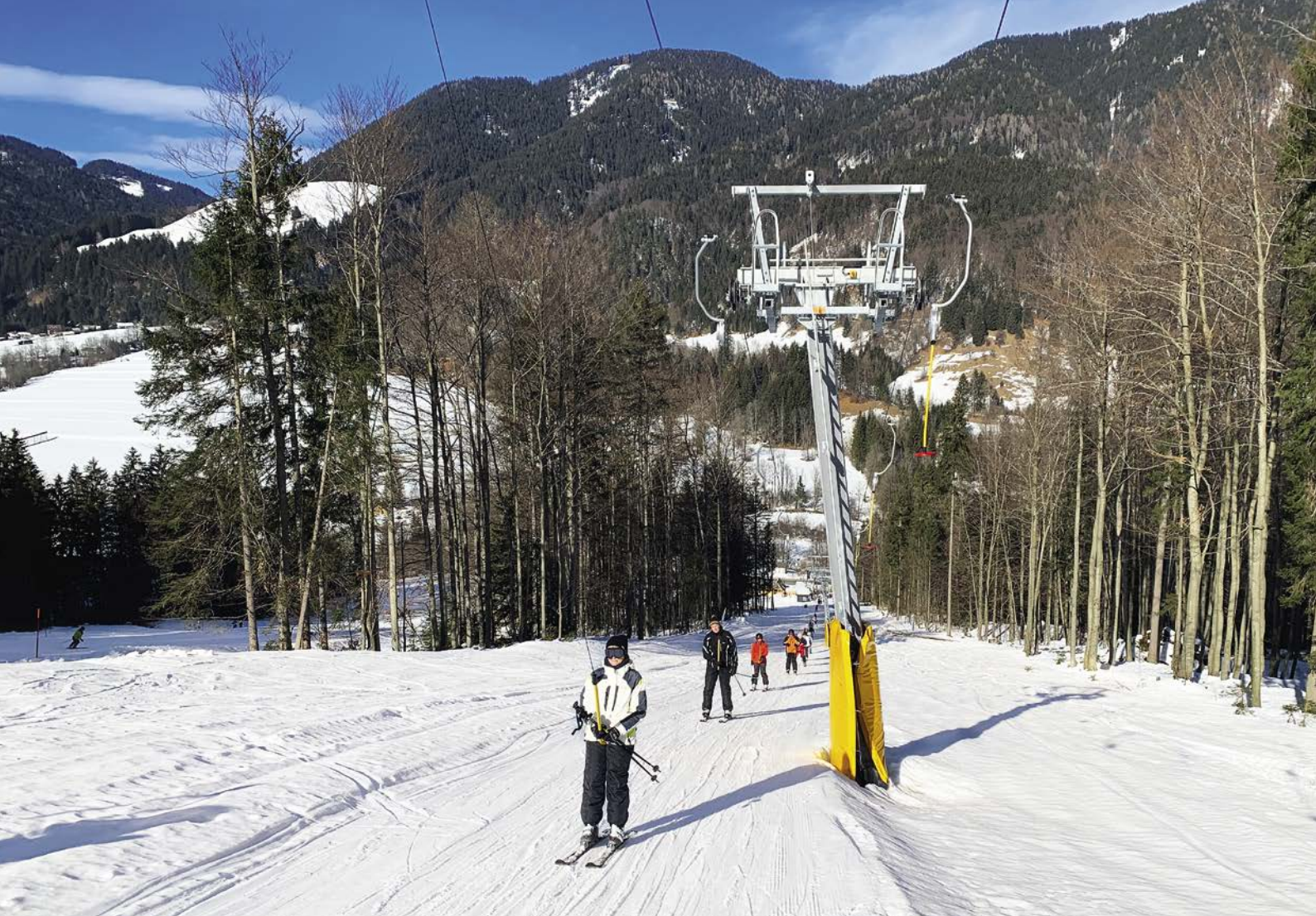


SL1 BRSNINA

Kraniska Gora / SL

Inclined length	411 m	Power	38 kW
Vertical rise	99 m	Total number of vehicles	82
Transport capacity	900 p/h	Total number of towers	5





Successes 2018





Successes 2018

AT55 BESIKDÜZÜ

Besikdüzü / TR



	3010 m
	521 m
	400 p/h
	400 kW
	2
	4

TD28 MATTERHORN

GLACIER RIDE



Zermatt / CH

	3765 m
	898 m
	2000 p/h
	1072 kW
	25
	3

BD10 SACHEON

Sacheon / KR



	2490 m
	338 m
	1300 p/h
	665 kW
	42
	5

GD10 ST. VALENTIN - SCHÖNEBEN

Schöneben - Belpiano / IT



	4324 m
	421 m
	1600 p/h
	949 kW
	73
	24

GD10 HÖLLENTAL

Schöneben - Belpiano / IT



	1360 m
	414 m
	2400 p/h
	882 kW
	38
	10

GD10 SKI EXPRESS

Gitschberg - Rio di Pusteria / IT



	1853 m
	510 m
	3000 p/h
	882 kW
	65
	16

GD10 COLBRICON EXPRESS

San Martino di Castrozza / IT



	1977 m
	359 m
	2400 p/h
	794 kW
	52
	13

GD10 RAIN TAL

Kitzbühel / AT



	1299 m
	505 m
	1600 p/h
	529 kW
	25
	10

GD10 WIMBACHEXPRESS

Hochzillertal - Kaltenbach / AT



	2175 m
	703 m
	2620 p/h
	794 kW
	62
	12

GD10 MK MAISKOGELBAHN

Kaprun / AT



	3811 m
	369 m
	2800 p/h
	1714 kW
	123
	27

GD10 SCHNEEHÜENERSTOCK EXPRESS

Andermatt / CH




	1710 m
	548 m
	2400 p/h
	740 kW
	51
	14




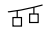

GD10 JENNERBAHN I

Berchtesgaden / DE








	1822 m
	556 m
	1600 p/h
	529 kW
	33
	10


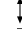




GD10 JENNERBAHN II
Berchtesgaden / DE 


	1362 m
	600 m
	1600 p/h
	529 kW
	27
	9

GD10 VIEUX MOULIN
Val Cenis / FR 

	2151 m
	643 m
	2200 p/h
	882 kW
	55
	15



GD10 TREBEVIC
Sarajevo / BA 


	2158 m
	579 m
	1200 p/h
	370 kW
	33
	10


GD10 BACHLEDKA
Bachledova dolina / SK 


	1519 m
	264 m
	2601 p/h
	529 kW
	45
	9







GD8 CHAMPOLUC - CREST
Ayas / IT 

	1121 m
	397 m
	2400 p/h
	700 kW
	41
	10







TMX6-8 PANORAMABAHN
Rosskopf - Monte Cavallo / IT 

	822 m
	275 m
	2400 p/h
	450 kW
	46
	9





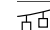

TMX8-10 PLATTENKARBAHN
Obertauern / AT 

	1065 m
	383 m
	3630 p/h
	690 kW
	58 / 10
	11







CD8C WEST EXPRESS
Sälen / SE 


	1366 m
	228 m
	3200 p/h
	489 kW
	57
	11





CD6 MITTELSTATION
Sexten - Sesto / IT 

	1299 m
	353 m
	2400 p/h
	662 kW
	62
	13






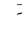
CD6 MEZDI
Seiser Alm - Alpe di Siusi / IT 

	921 m
	250 m
	2700 p/h
	441 kW
	52
	9

CD6 FONTARI
Campo Imperatore
Gran Sasso / IT 

	915 m
	180 m
	2400 p/h
	320 kW
	46
	10

CD6 FOSSADEI
Pinzolo / IT 

	913 m
	273 m
	2400 p/h
	380 kW
	45
	7

CD6 ROBY
Abtei - Badia / IT



	542 m
	117 m
	2800 p/h
	294 kW
	34
	6

CD6C BRUNELLE
Kitzbühel / AT



	1173 m
	387 m
	1800 p/h
	441 kW
	44
	12

CD6 MARTINOVI BARAKI
Borovets / BG



	1181 m
	313 m
	3000 p/h
	529 kW
	60
	10

CD6C JENNERWIESEN
Berchtesgaden / DE



	602 m
	161 m
	1600 p/h
	294 kW
	22
	7

CD6 TABÉ
Chamonix - Mont Blanc / FR



	959 m
	302 m
	2800 p/h
	794 kW
	47
	9

CD6C HAFJELLTOPPEN
Øyer / NO



	2022 m
	278 m
	2600 p/h
	500 kW
	86
	16

CD6C HALA -
MALE SKRZYCZNE
Szczyrk / PL



	1691 m
	205 m
	2000 p/h
	441 kW
	67
	13

CD6 MUNTELE MIC
Muntele Mic / RO



	1764 m
	379 m
	1800 p/h
	320 kW
	62
	12

CD6 GÖTES EXPRESS
Borlänge / SE



	955 m
	238 m
	3200 p/h
	368 kW
	63
	12

CD6 STOLLIFT B
Järvsö / SE



	668 m
	197 m
	2600 p/h
	355 kW
	37
	8

CF4 NUOVA TARVISIO
Tarvisio / IT








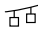

	610 m
	191 m
	1205 p/h
	82 kW
	46
	6


SL1 VALLONCELLO
Roccaraso / IT





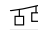




	353 m
	88 m
	900 p/h
	45 kW
	60
	4





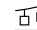

SL1 RIENZ
Toblach - Dobbiaco / IT 


	718 m
	123 m
	900 p/h
	75 kW
	114
	7







SL1 CAMPO SCUOLA -
LE BUSE
Falcade / IT 


	353 m
	76 m
	900 p/h
	45 kW
	65
	5







SL1 PRADIBOSCO
Prato Carnico -
U.T.I. della Carnia / IT 


	543 m
	110 m
	900 p/h
	42 kW
	95
	6







SL1 MARMOTTONS
Chamonix - Mont Blanc / FR 

	185 m
	31 m
	789 p/h
	22 kW
	40
	2

SL1 PETITS MARMOTTONS
Chamonix - Mont Blanc / FR 







	108 m
	15 m
	770 p/h
	22 kW
	22
	2




SL1 STÖTEN LILLA
Stöten / SE 

	382 m
	45 m
	748 p/h
	22 kW
	58
	4

SL1 BRSNINA
Kranjska Gora / SL 

	411 m
	99 m
	900 p/h
	38 kW
	82
	5

	Inclined length
	Vertical rise
	Transport capacity
	Power
	Total number of vehicles
	Total number of towers

	Winter Sports
	Urban
	Tourism

LEITNER ropeways



Sterzing (Italy)



Sterzing (Italy)



Telfs (Austria)



Montmélian (France)



Grand Junction (USA)



Starà L'ubovňa (Slovakia)



